

FILE SPEC: P:\0675\_Tyler\_Island\1330\_E\_Walnut\_Grove\_FRRFS\08\_Civil\400\_Plans\020\_CAD\Sheets\200724\_20-Crown-Alignment.dwg  
 PLOT DATE: Jul 24, 2020 - 1:08pm



SUBMITTAL	
%	Date

 NORTH ORIENTATION	NO.	DESCRIPTION	DATE	APPR.

DESIGN BY	JCS
DRAWN BY	JCS
CHECK BY	JAM
HORIZONTAL DATUM	CCS83, ZONE 3
VERTICAL DATUM	NAVD88

DRAWING SCALE	1" = 250'
ORIGINAL DRAWING SCALE	0 1/2" 1"

**KJELDEN SINNOCK NEUDECK**  
 CIVIL ENGINEERS & LAND SURVEYORS  
 www.ksninc.com

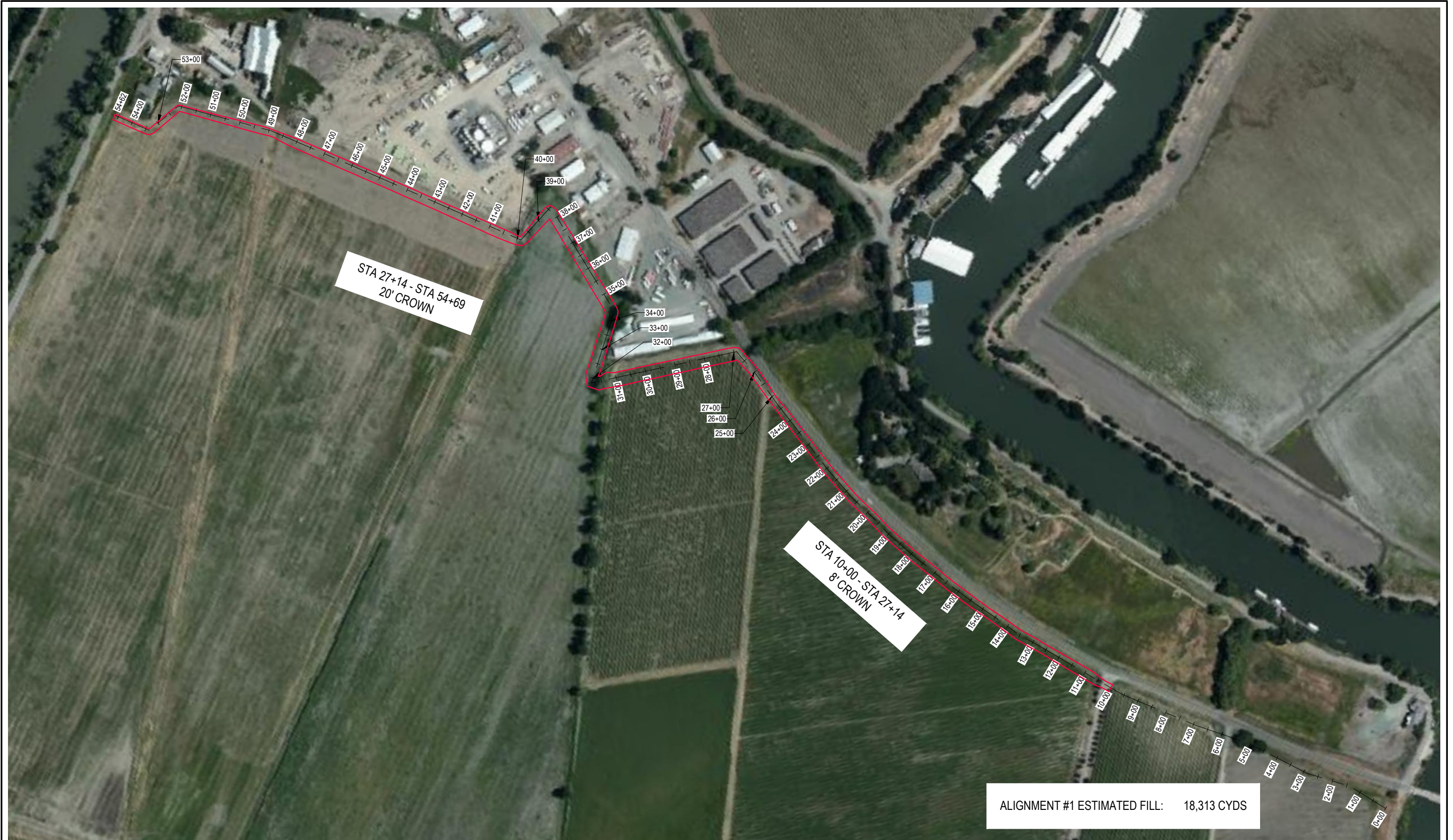
711 N Pershing Avenue  
 Stockton, CA 95203  
 209-946-0268  
 1550 Harbor Drive, Suite 212  
 West Sacramento, CA 95691  
 916-403-5900

RECLAMATION DISTRICT NO. 563  
 FLOOD FIGHT ACCESS ROAD  
 SACRAMENTO COUNTY, CALIFORNIA

**Project Key Map**

DATE	JULY 23, 2020
SHEET IDENTIFICATION	<b>C-101</b>
SHEET	1 OF 10
KSN PROJECT FILE NO.	0675-1330

FILE SPEC: P:\0675\_Tyler\_Island\1330\_E\_Walnut\_Grove\_FRFES\08\_Civil\400\_Plans\020\_CAD\Sheets\200724\_20-Crown-Alignment.dwg  
 PLOT DATE: Jul 24, 2020 - 1:09pm



	SUBMITTAL	
	%	Date

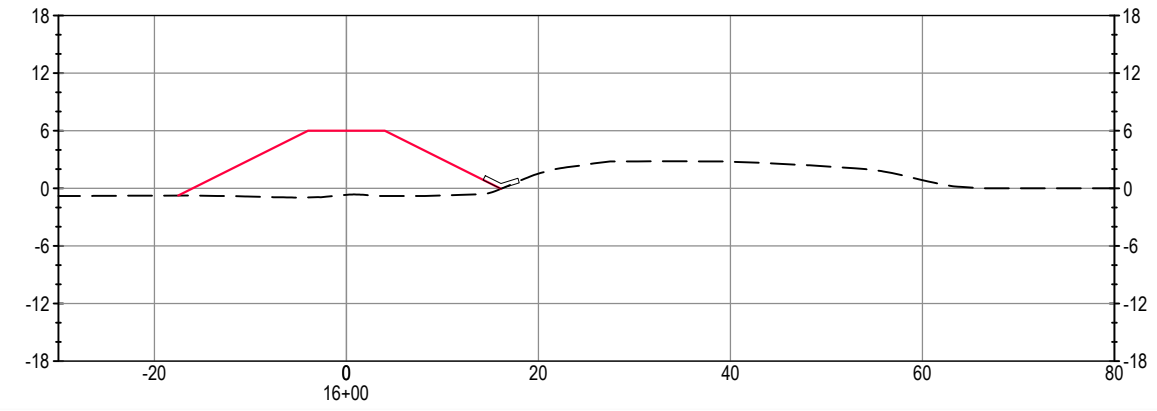
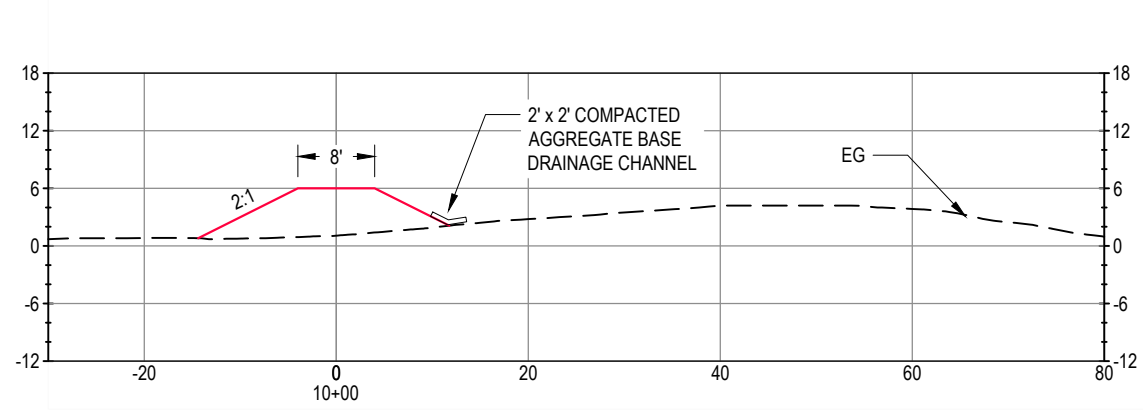
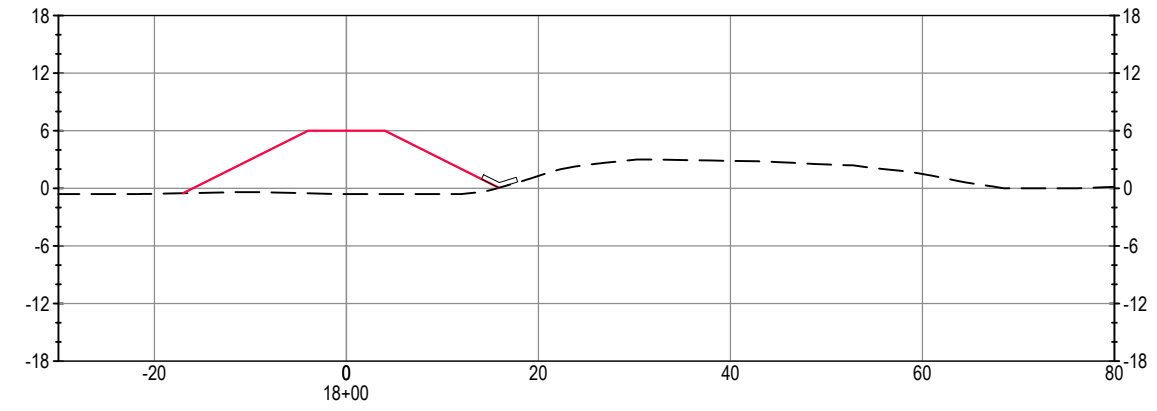
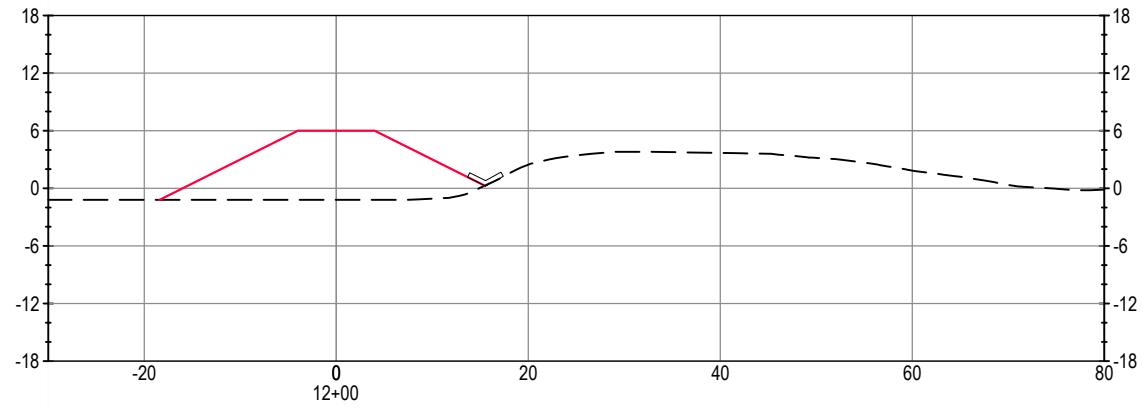
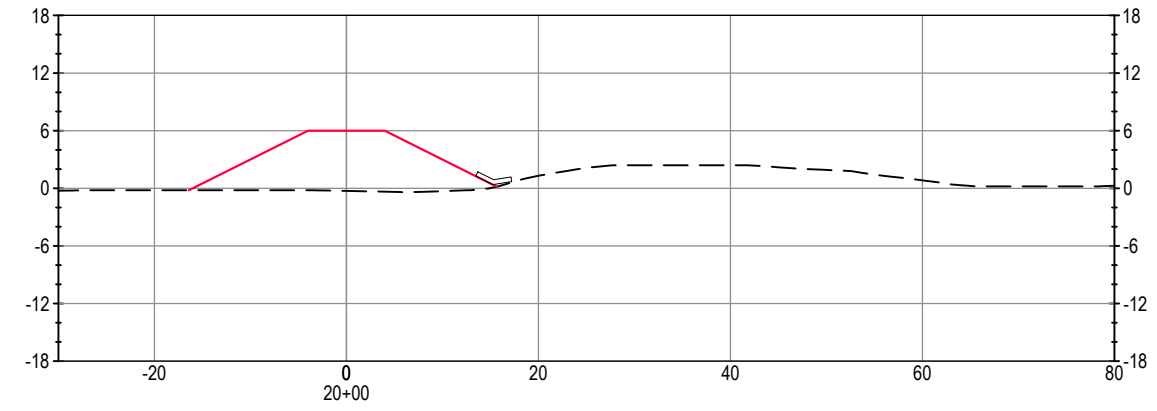
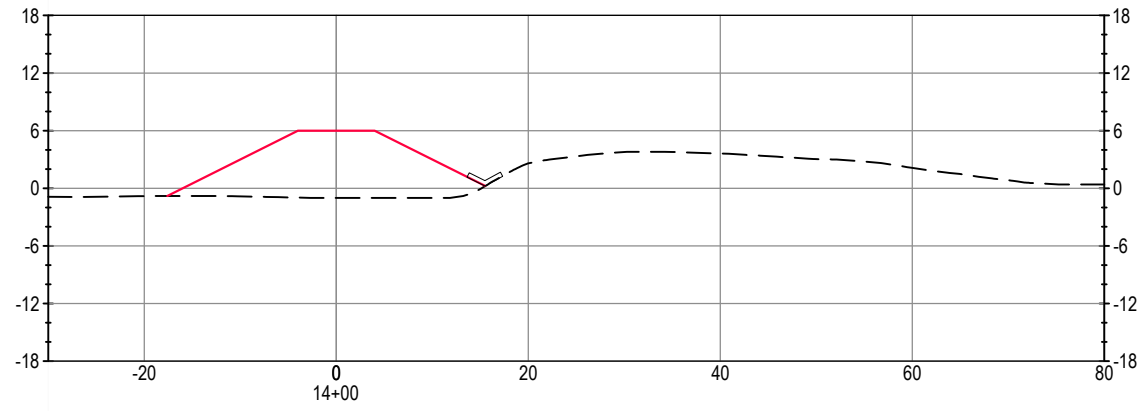
	NO.	DESCRIPTION	DATE	APPR.

DESIGN BY	JCS	DRAWING SCALE	1" = 150'
DRAWN BY	JCS	ORIGINAL DRAWING SCALE	0 1/2" 1"
CHECK BY	JAM		
HORIZONTAL DATUM	CCS83, ZONE 3		
VERTICAL DATUM	NAVD88		

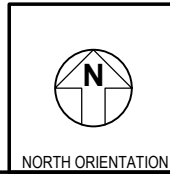
711 N Pershing Avenue  
 Stockton, CA 95203  
 209-946-0268  
 1550 Harbor Drive, Suite 212  
 West Sacramento, CA 95691  
 916-403-5900  
 www.ksninc.com

RECLAMATION DISTRICT NO. 563 FLOOD FIGHT ACCESS ROAD SACRAMENTO COUNTY, CALIFORNIA  <b>Alignment Option #1</b> <b>Vicinity Map</b> STA 10+00 TO STA 54+69	DATE JULY 23, 2020  SHEET IDENTIFICATION <b>C-300</b> SHEET 2 OF 10 KSN PROJECT FILE NO. 0675-1330  ATE-INSERT-EDIT
-----------------------------------------------------------------------------------------------------------------------------------------------------------------------------	------------------------------------------------------------------------------------------------------------------------------------------------

FILE SPEC: P:\0675\_Tyler\_Island\1330\_E\_Walnut\_Grove\_FRRFS\08\_Civil\400\_Plans\020\_CAD\Sheets\200724\_20-Crown-Alignment.dwg  
 PLOT DATE: Jul 24, 2020 - 1:09pm



SUBMITTAL	
%	Date



NO.	DESCRIPTION	DATE	APPR.

DESIGN BY JCS  
 DRAWN BY JCS  
 CHECK BY JAM  
 HORIZONTAL DATUM  
 CCS83, ZONE 3  
 VERTICAL DATUM  
 NAVD88

DRAWING SCALE  
 1" = 10'  
 ORIGINAL DRAWING SCALE  
 0 1/2" 1"



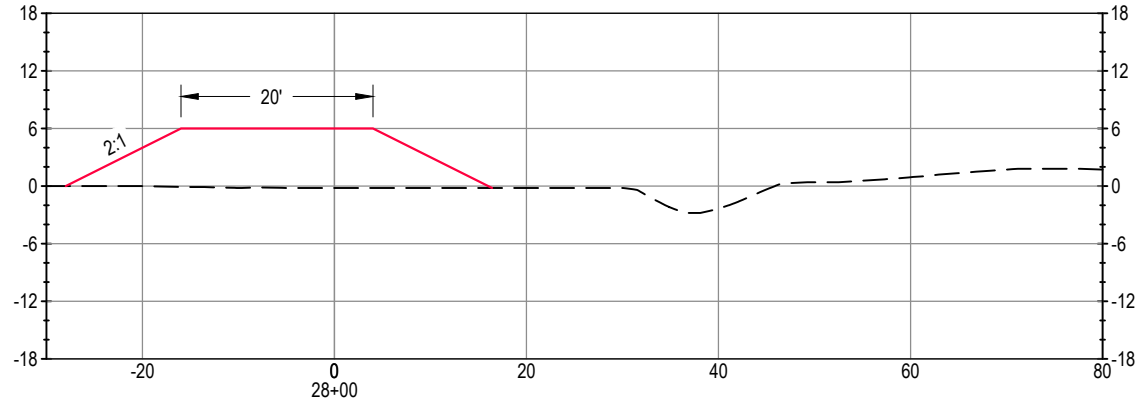
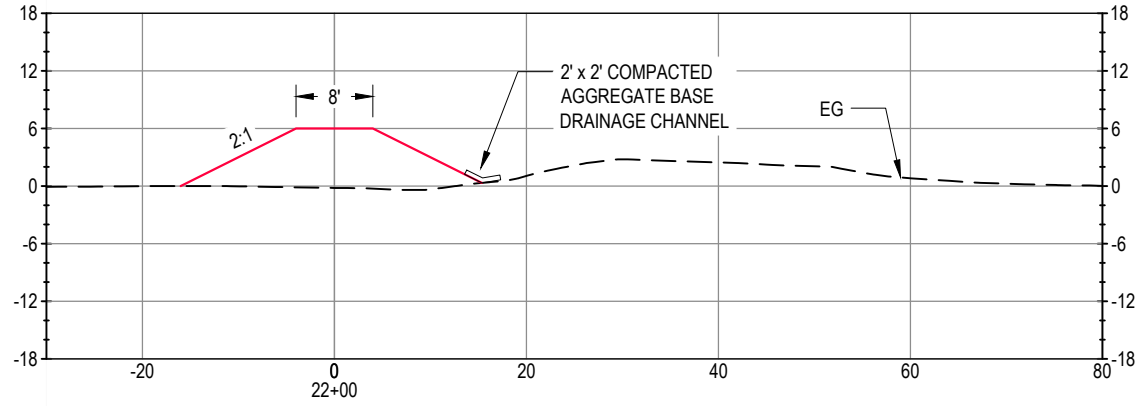
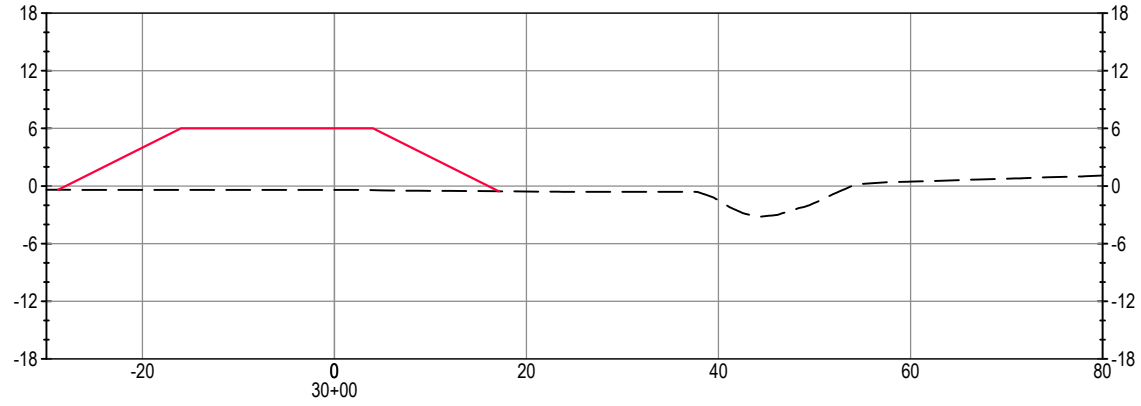
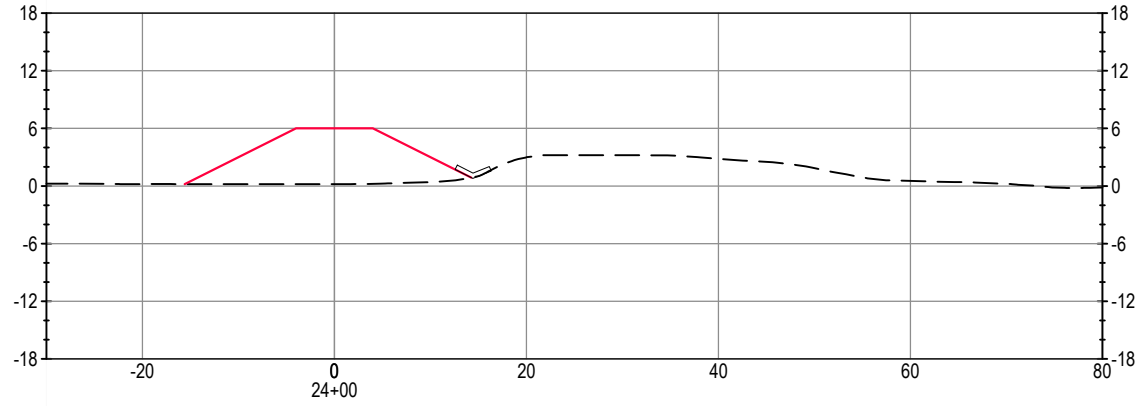
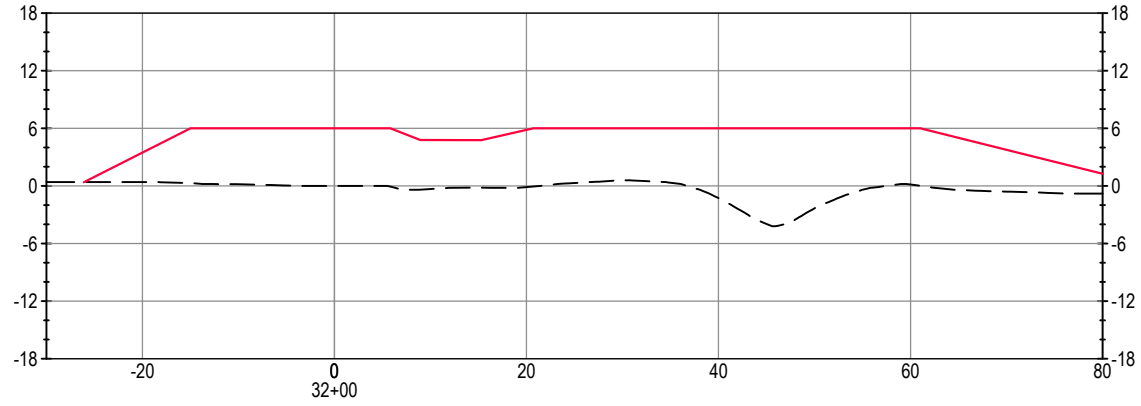
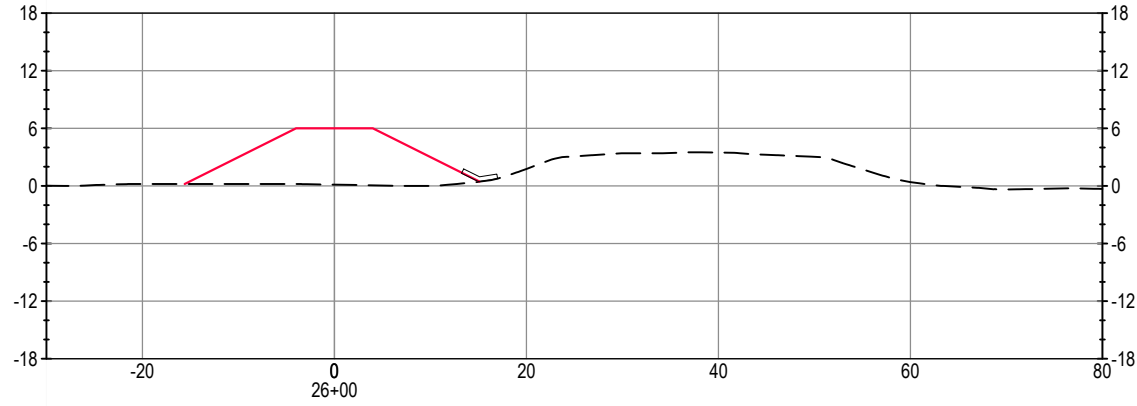
711 N Pershing Avenue  
 Stockton, CA 95203  
 209-946-0268  
 1550 Harbor Drive, Suite 212  
 West Sacramento, CA 95691  
 916-403-5900

RECLAMATION DISTRICT NO. 563  
 FLOOD FIGHT ACCESS ROAD  
 SACRAMENTO COUNTY, CALIFORNIA

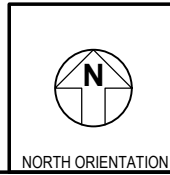
ALIGNMENT #1  
 SECTIONS  
 STA 0+00 TO STA 20+00

DATE  
 JULY 23, 2020  
 SHEET IDENTIFICATION  
**C-301**  
 SHEET 3 OF 10  
 KSN PROJECT FILE NO.  
 0675-1330

FILE SPEC: P:\0675\_Tyler\_Island\1330\_E\_Walnut\_Grove\_FRRFS\08\_Civil\400\_Plans\020\_CAD\Sheets\200724\_20-Crown-Alignment.dwg  
 PLOT DATE: Jul 24, 2020 - 1:09pm



SUBMITTAL	
%	Date



NO.	DESCRIPTION	DATE	APPR.

DESIGN BY JCS	DRAWING SCALE 1" = 10'
DRAWN BY JCS	ORIGINAL DRAWING SCALE 0 1/2" = 1"
CHECK BY JAM	
HORIZONTAL DATUM CCS83, ZONE 3	
VERTICAL DATUM NAVD88	

**KJELSDEN SINNOCK NEUDECK inc.**  
 CIVIL ENGINEERS & LAND SURVEYORS  
 www.ksninc.com

711 N Pershing Avenue  
 Stockton, CA 95203  
 209-946-0268

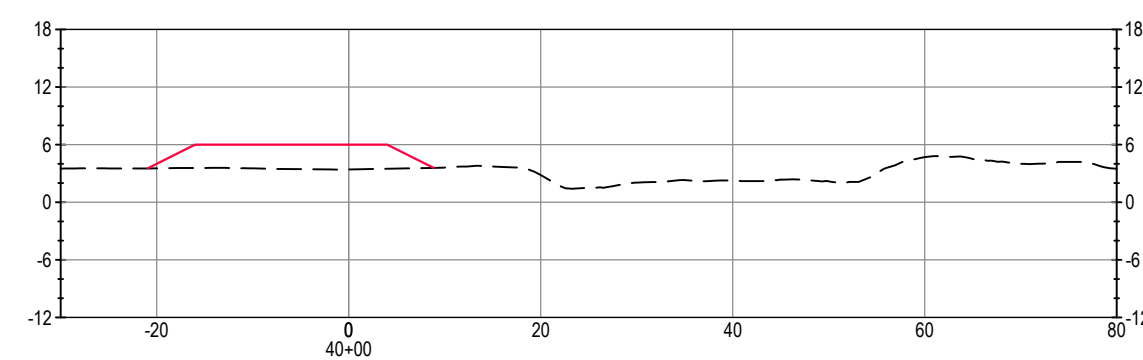
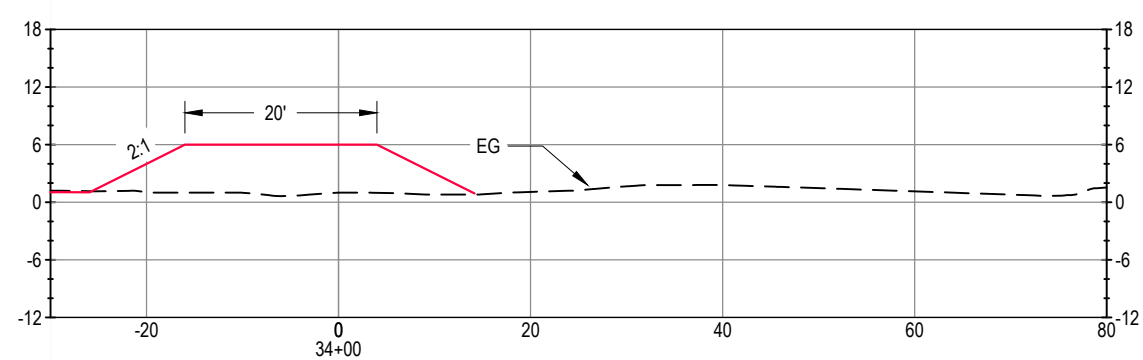
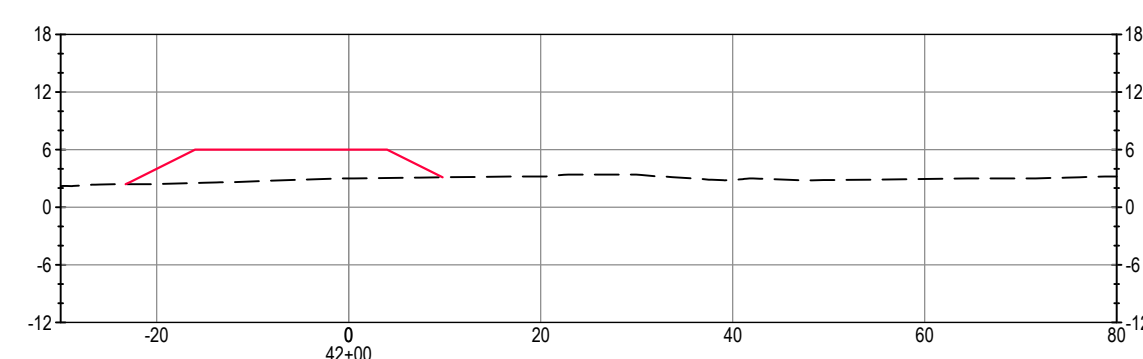
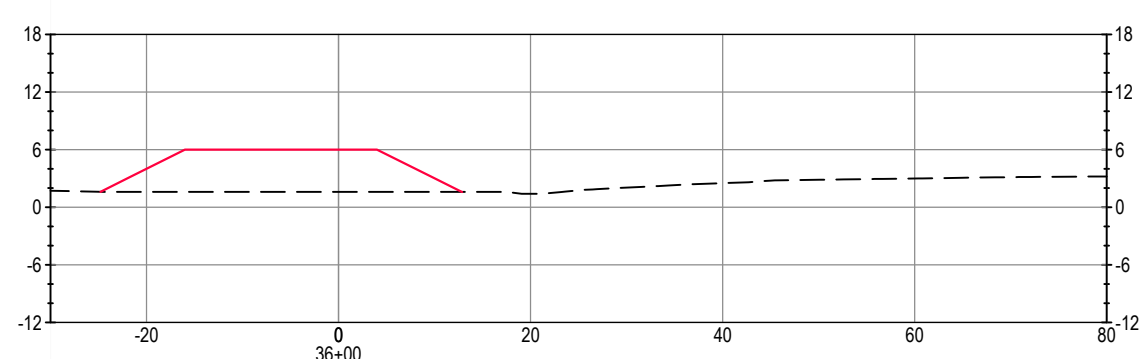
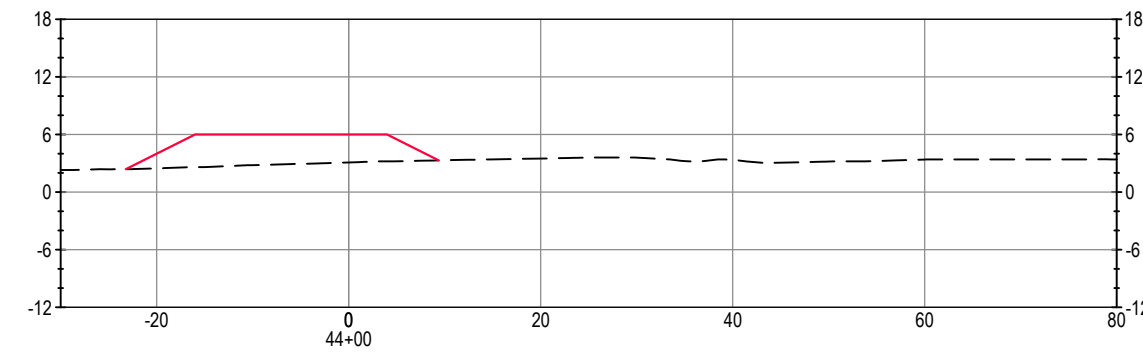
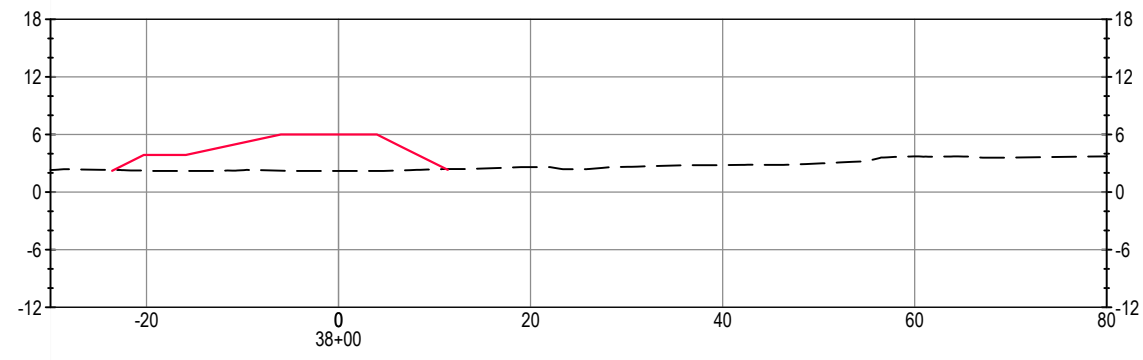
1550 Harbor Drive, Suite 212  
 West Sacramento, CA 95691  
 916-403-5900

RECLAMATION DISTRICT NO. 563  
 FLOOD FIGHT ACCESS ROAD  
 SACRAMENTO COUNTY, CALIFORNIA

Alignment Option #1  
 SECTIONS  
 STA 22+00 TO STA 32+00

DATE JULY 23, 2020
SHEET IDENTIFICATION <b>C-302</b>
SHEET 4 OF 10
KSN PROJECT FILE NO. 0675-1330

FILE SPEC: P:\0675\_Tyler\_Island\1330\_E\_Walnut\_Grove\_FRFES\08\_Civil\400\_Plans\020\_CAD\Sheets\200724\_20-Crown-Alignment.dwg  
 PLOT DATE: Jul 24, 2020 - 1:09pm



	SUBMITTAL	
	%	Date

	NO.	DESCRIPTION	DATE	APPR.

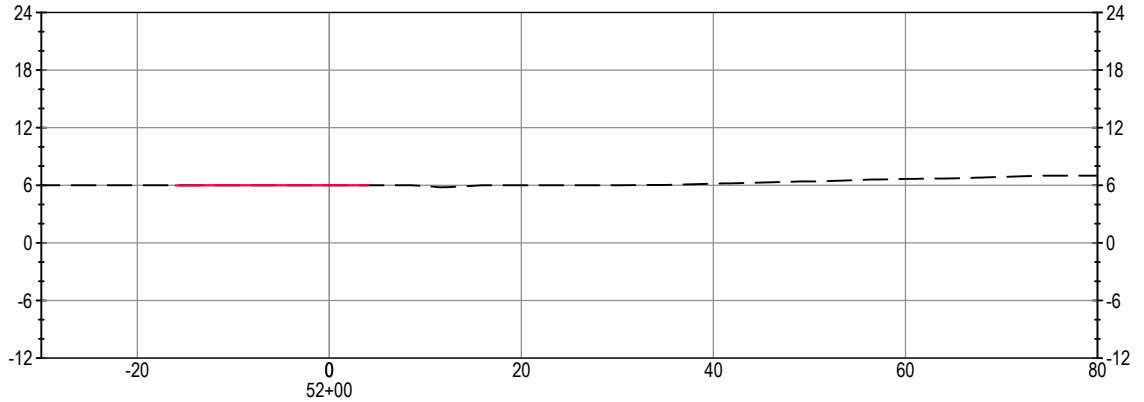
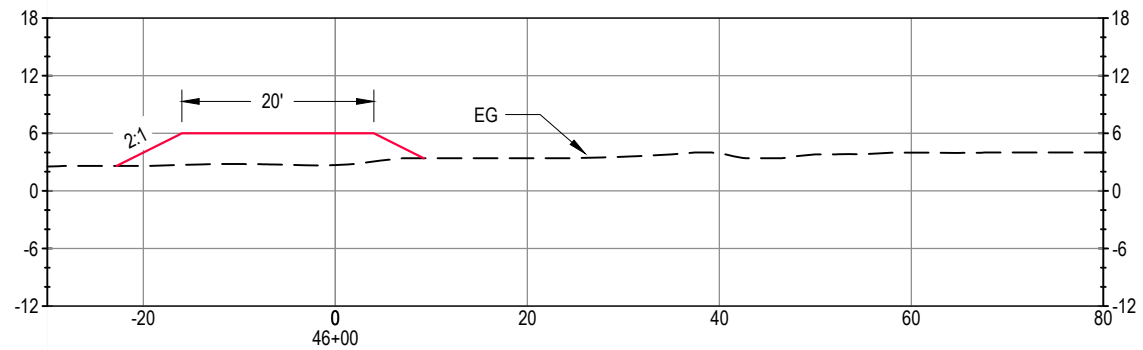
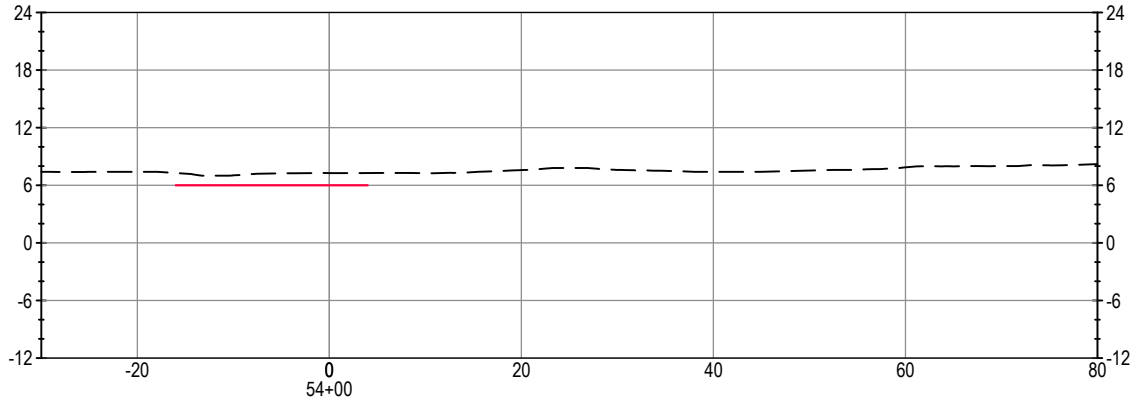
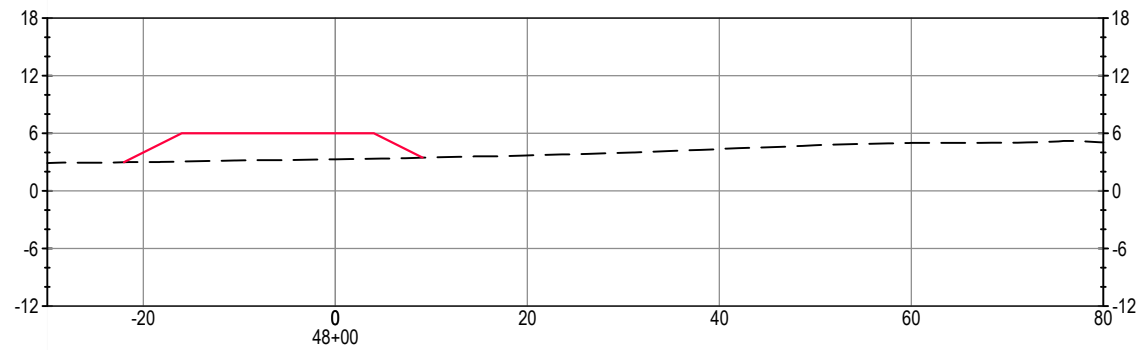
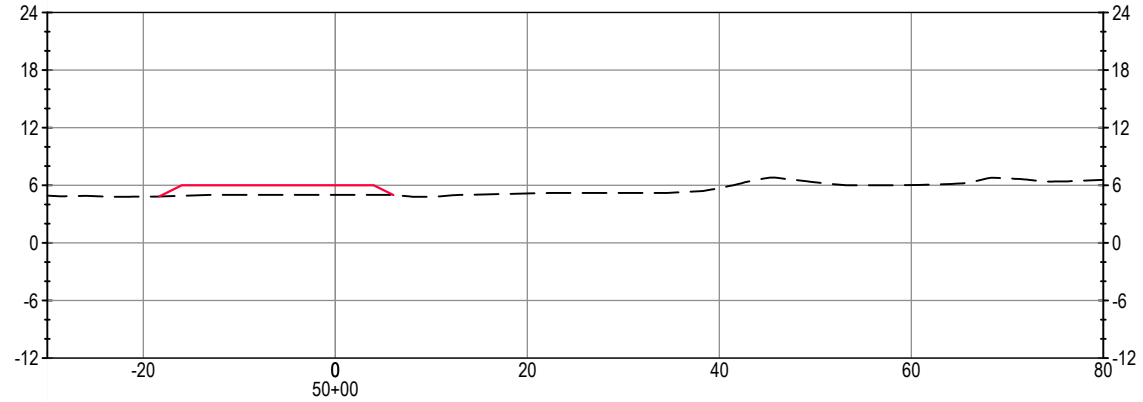
DESIGN BY JCS	DRAWING SCALE
DRAWN BY JCS	1" = 10'
CHECK BY JAM	ORIGINAL DRAWING SCALE
HORIZONTAL DATUM CCS83, ZONE 3	0 1/2" 1"
VERTICAL DATUM NAVD88	

711 N Pershing Avenue  
 Stockton, CA 95203  
 209-946-0268  
 1550 Harbor Drive, Suite 212  
 West Sacramento, CA 95691  
 916-403-5900

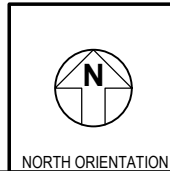
RECLAMATION DISTRICT NO. 563  
 FLOOD FIGHT ACCESS ROAD  
 SACRAMENTO COUNTY, CALIFORNIA  
  
 Alignment Option #1  
 SECTIONS  
 STA 34+00 TO STA 44+00

DATE JULY 23, 2020
SHEET IDENTIFICATION <b>C-303</b>
SHEET 5 OF 10
KSN PROJECT FILE NO. 0675-1330

FILE SPEC: P:\0675\_Tyler\_Island\1330\_E\_Walnut\_Grove\_FRRFS\08\_Civil\400\_Plans\020\_CAD\Sheets\200724\_20-Crown-Alignment.dwg  
 PLOT DATE: Jul 24, 2020 - 1:09pm



SUBMITTAL	
%	Date



NO.	DESCRIPTION	DATE	APPR.

DESIGN BY JCS	DRAWING SCALE 1" = 10'
DRAWN BY JCS	ORIGINAL DRAWING SCALE 0 1/2" = 1"
CHECK BY JAM	
HORIZONTAL DATUM CCS83, ZONE 3	
VERTICAL DATUM NAVD88	

**KJELDEN SINNER NEUDECK inc.**  
 CIVIL ENGINEERS & LAND SURVEYORS  
 www.ksninc.com  
 711 N Pershing Avenue  
 Stockton, CA 95203  
 209-946-0268  
 1550 Harbor Drive, Suite 212  
 West Sacramento, CA 95691  
 916-403-5900

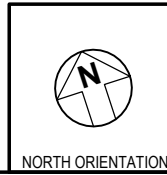
RECLAMATION DISTRICT NO. 563  
 FLOOD FIGHT ACCESS ROAD  
 SACRAMENTO COUNTY, CALIFORNIA  
 Alignment Option #1  
 SECTIONS  
 STA 46+00 TO STA 54+00

DATE JULY 23, 2020
SHEET IDENTIFICATION <b>C-304</b>
SHEET 6 OF 10
KSN PROJECT FILE NO. 0675-1330

FILE SPEC: P:\0675\_Tyler\_Island\1330\_E\_Walnut\_Grove\_FRFES\08\_Civil\400\_Plans\020\_CAD\Sheets\200724\_20-Crown-Alignment.dwg  
 PLOT DATE: Jul 24, 2020 - 1:09pm



SUBMITTAL	
%	Date



NO.	DESCRIPTION	DATE	APPR.

DESIGN BY JCS  
 DRAWN BY JCS  
 CHECK BY JAM  
 HORIZONTAL DATUM  
 CCS83, ZONE 3  
 VERTICAL DATUM  
 NAVD88

DRAWING SCALE  
 1" = 150'  
 ORIGINAL DRAWING SCALE  
 0 1/2" 1"

**KJELDEN SINNER NEUDECK inc.**  
 CIVIL ENGINEERS & LAND SURVEYORS  
 www.ksninc.com

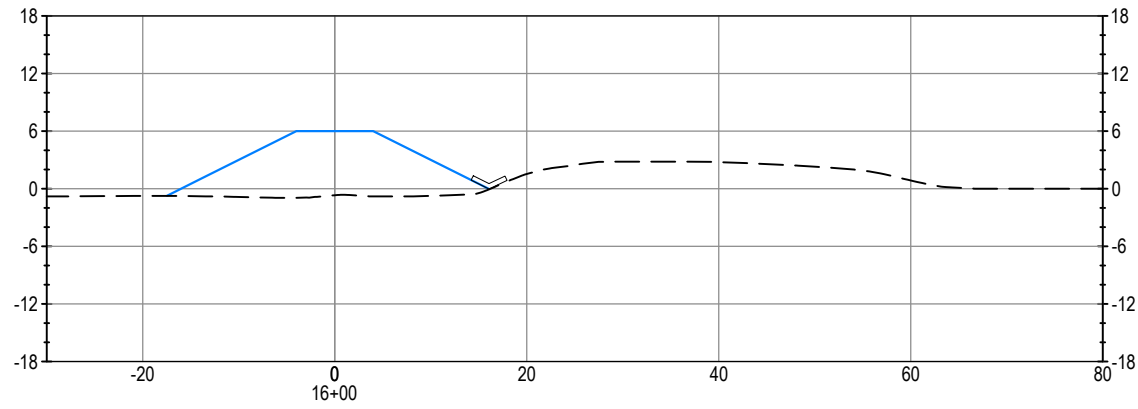
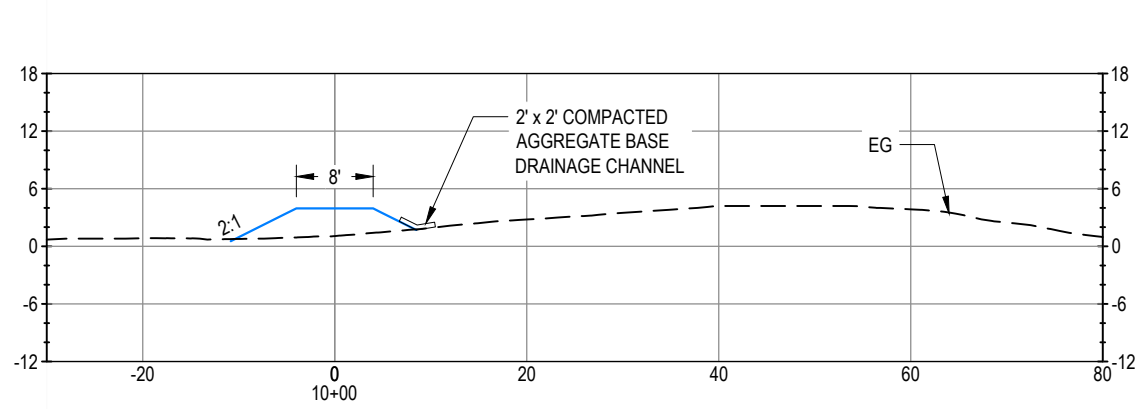
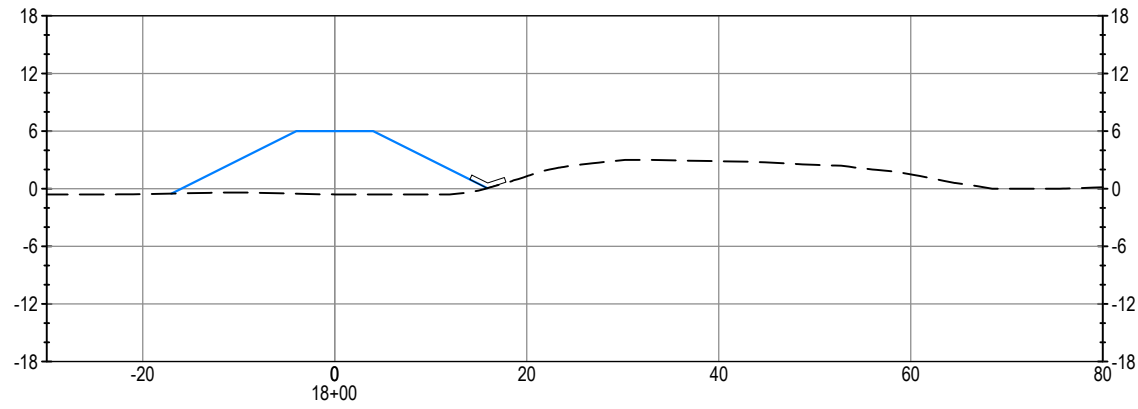
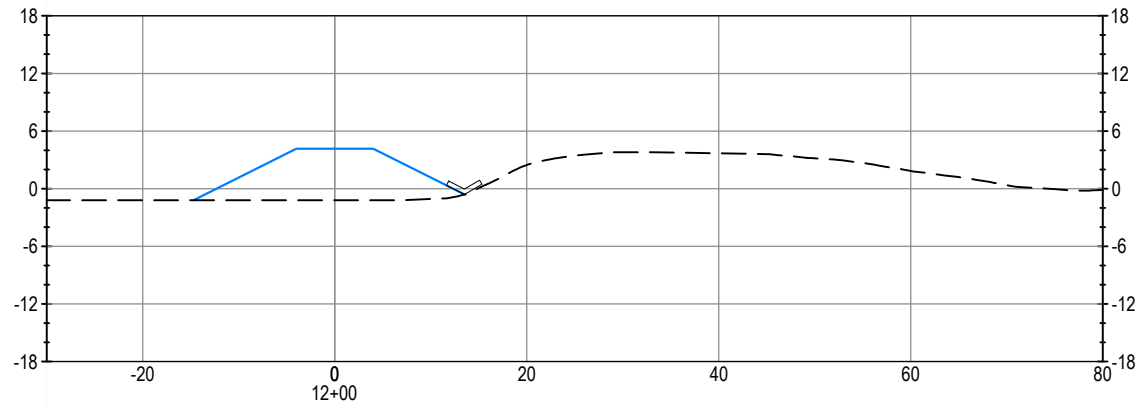
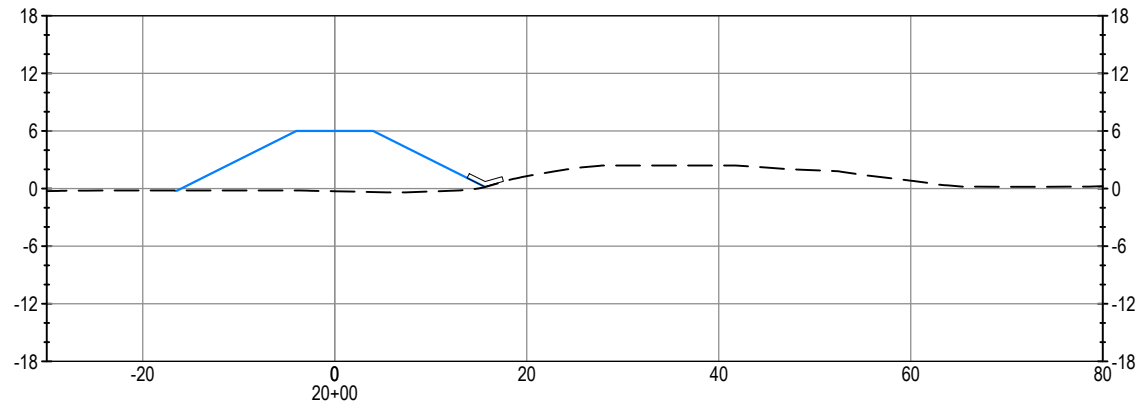
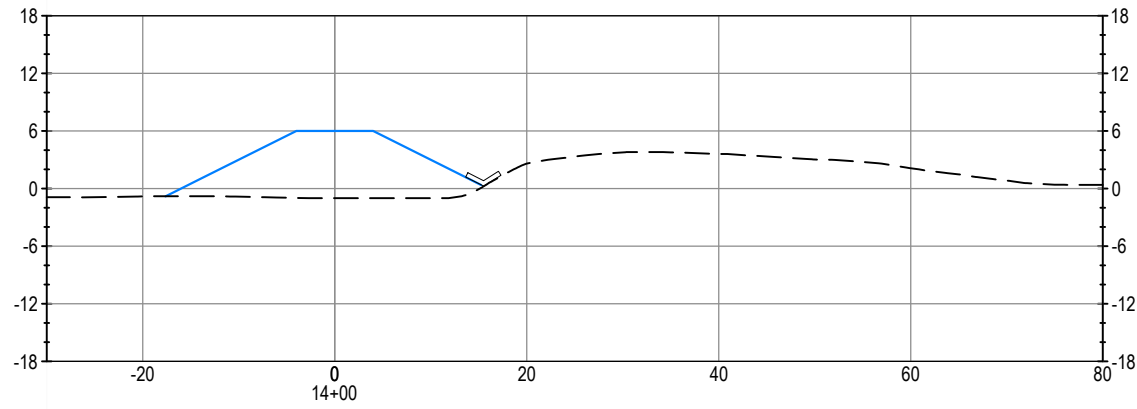
711 N Pershing Avenue  
 Stockton, CA 95203  
 209-946-0268  
 1550 Harbor Drive, Suite 212  
 West Sacramento, CA 95691  
 916-403-5900

RECLAMATION DISTRICT NO. 563  
 FLOOD FIGHT ACCESS ROAD  
 SACRAMENTO COUNTY, CALIFORNIA

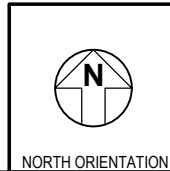
Alignment Option #2  
 Vicinity Map  
 STA 10+00 TO STA 50+87

DATE  
 JULY 23, 2020  
 SHEET IDENTIFICATION  
**C-305**  
 SHEET 7 OF 10  
 KSN PROJECT FILE NO.  
 0675-1330

FILE SPEC: P:\0675\_Tyler\_Island\1330\_E\_Walnut\_Grove\_FRRFS\08\_Civil\400\_Plans\020\_CAD\Sheets\200724\_20-Crown-Alignment.dwg  
 PLOT DATE: Jul 24, 2020 - 1:09pm



SUBMITTAL	
%	Date



NO.	DESCRIPTION	DATE	APPR.

DESIGN BY JCS  
 DRAWN BY JCS  
 CHECK BY JAM  
 HORIZONTAL DATUM  
 CCS83, ZONE 3  
 VERTICAL DATUM  
 NAVD88

DRAWING SCALE  
 1" = 10'  
 ORIGINAL DRAWING SCALE  
 0 1/2" 1"



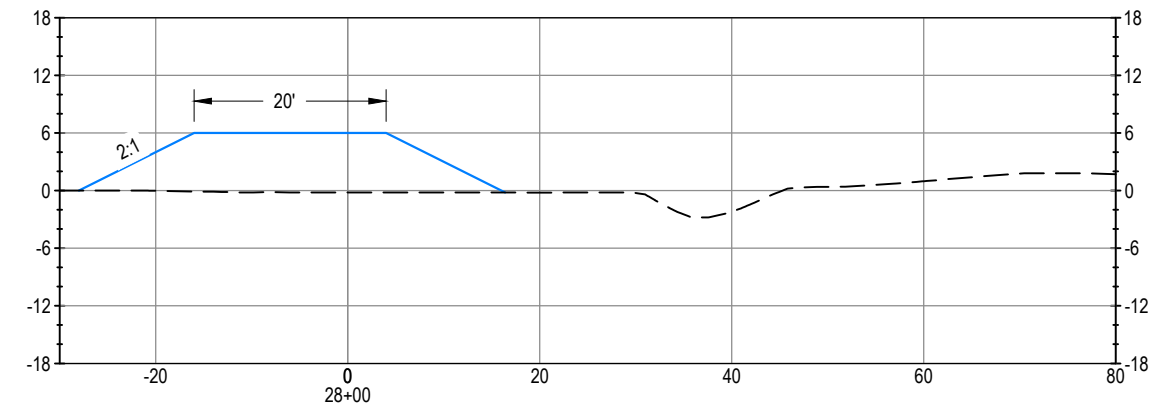
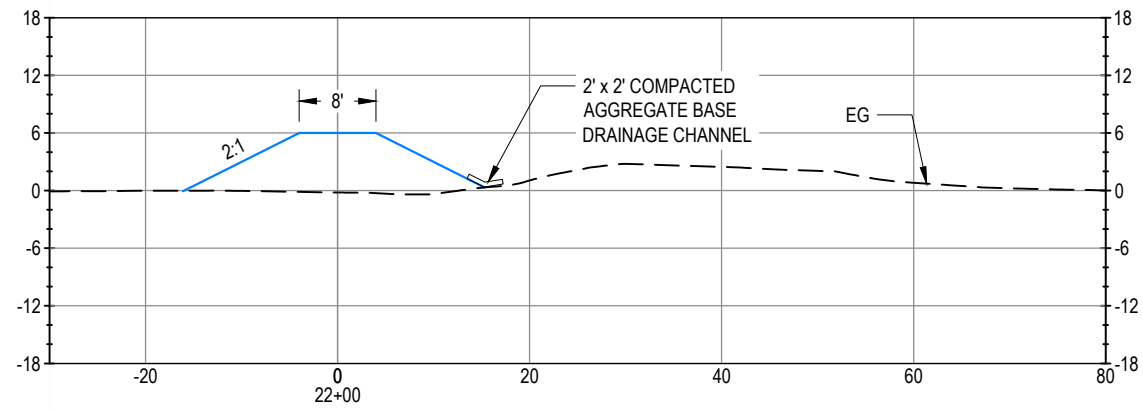
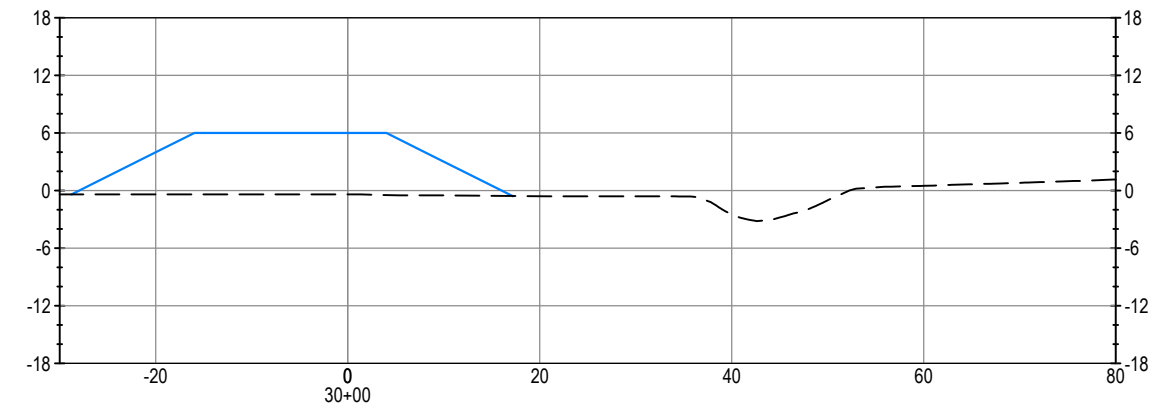
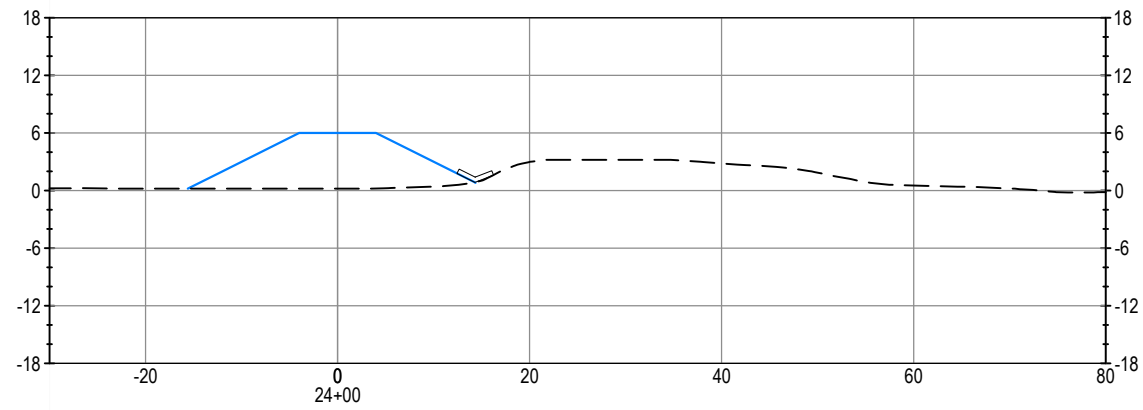
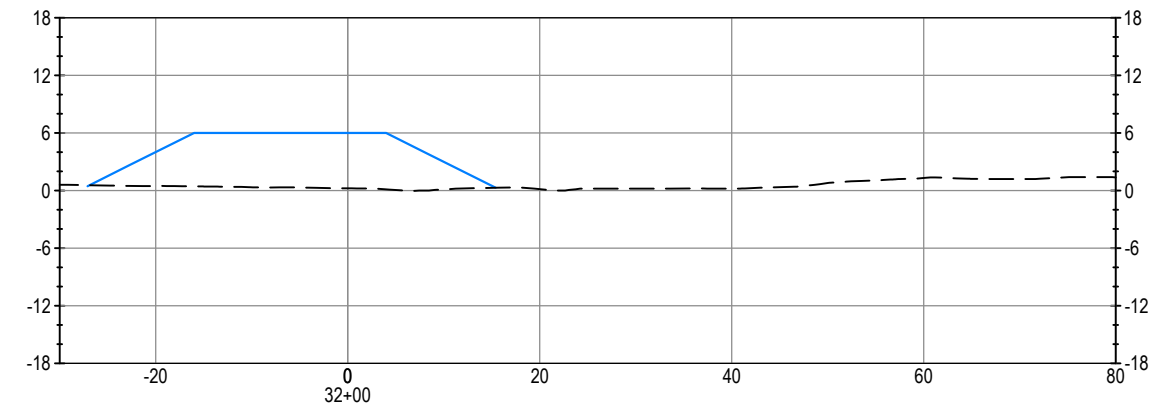
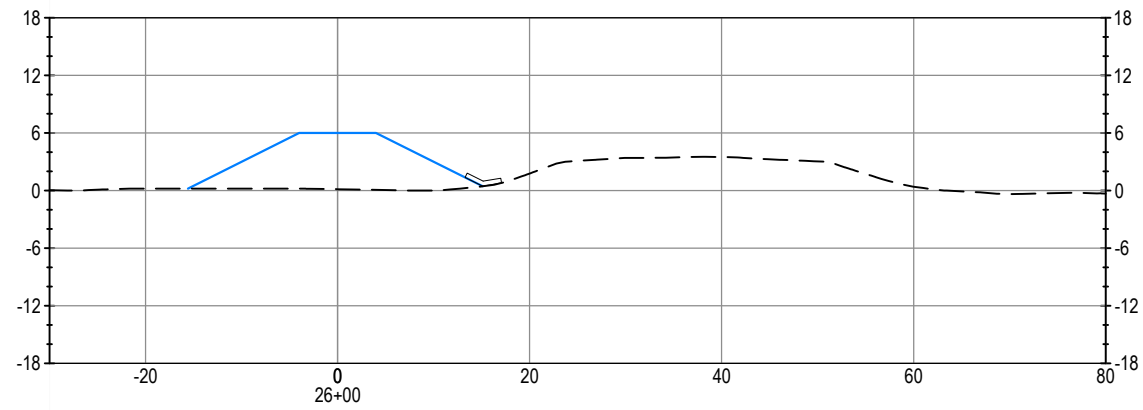
711 N Pershing Avenue  
 Stockton, CA 95203  
 209-946-0268  
 1550 Harbor Drive, Suite 212  
 West Sacramento, CA 95691  
 916-403-5900

RECLAMATION DISTRICT NO. 563  
 FLOOD FIGHT ACCESS ROAD  
 SACRAMENTO COUNTY, CALIFORNIA  
 Alignment Option #2  
 SECTIONS  
 STA 10+00 TO STA 20+00

DATE  
 JULY 23, 2020  
 SHEET IDENTIFICATION  
**C-306**  
 SHEET 8 OF 10  
 KSN PROJECT FILE NO.  
 0675-1330



FILE SPEC: P:\0675\_Tyler\_Island\1330\_E\_Walnut\_Grove\_FRRFS\08\_Civil\400\_Plans\020\_CAD\Sheets\200724\_20-Crown-Alignment.dwg  
 PLOT DATE: Jul 24, 2020 - 1:09pm



SUBMITTAL	
%	Date

 NORTH ORIENTATION	NO.	DESCRIPTION	DATE	APPR.

DESIGN BY JCS	DRAWING SCALE
DRAWN BY JCS	1" = 10'
CHECK BY JAM	ORIGINAL DRAWING SCALE
HORIZONTAL DATUM CCS83, ZONE 3	0 1/2" 1"
VERTICAL DATUM NAVD88	

**KJELDEN SINNER NEUDECK inc.**  
 CIVIL ENGINEERS & LAND SURVEYORS  
 www.ksninc.com

711 N Pershing Avenue  
 Stockton, CA 95203  
 209-946-0268

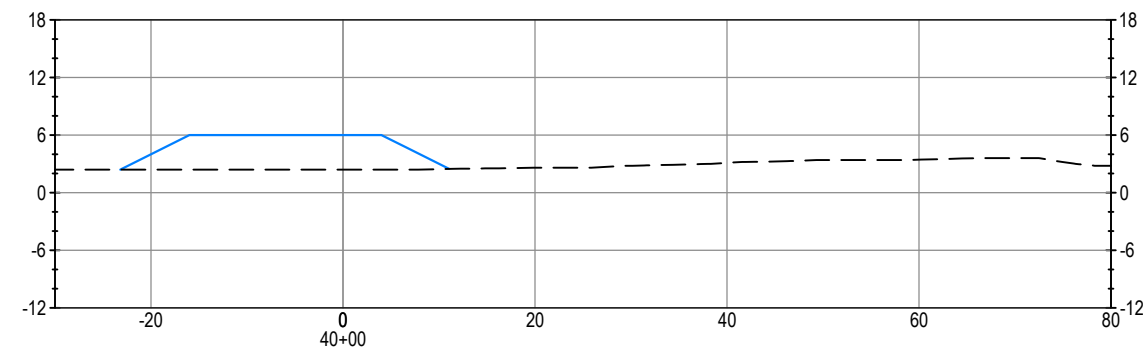
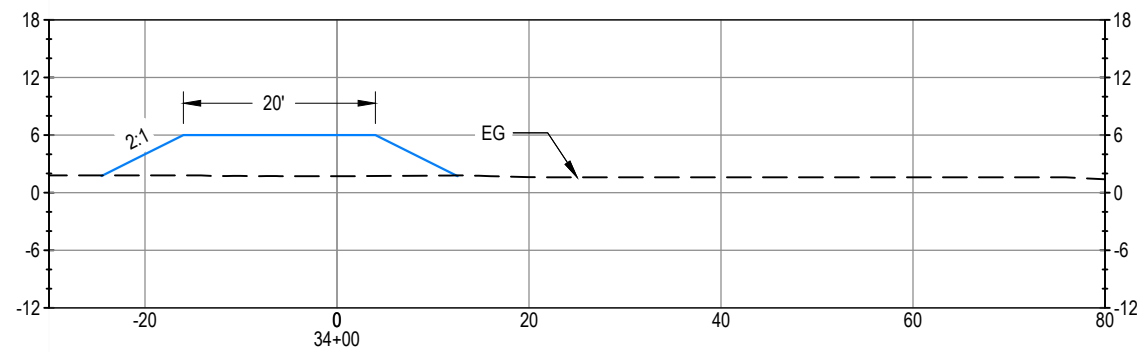
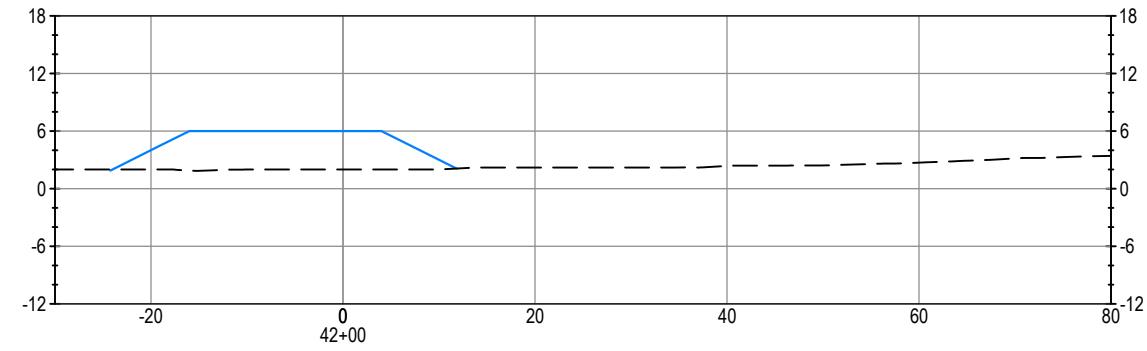
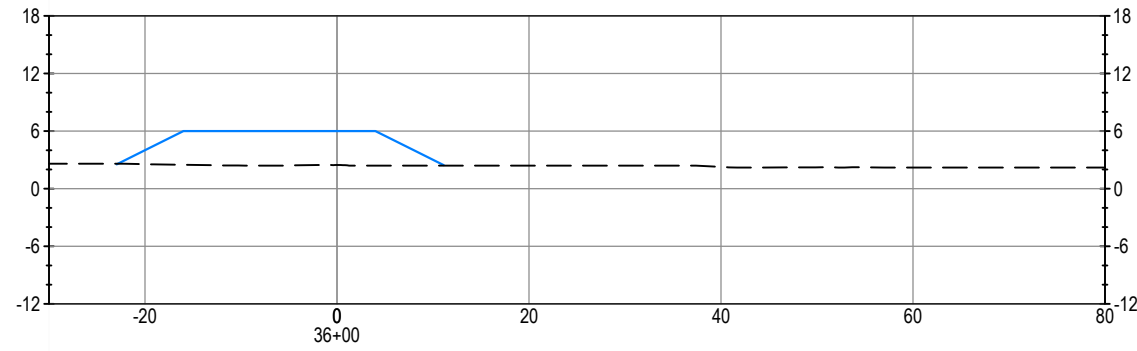
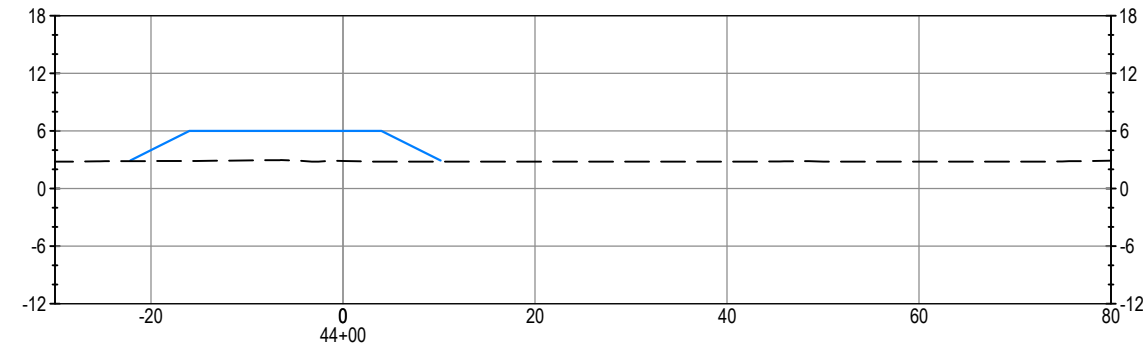
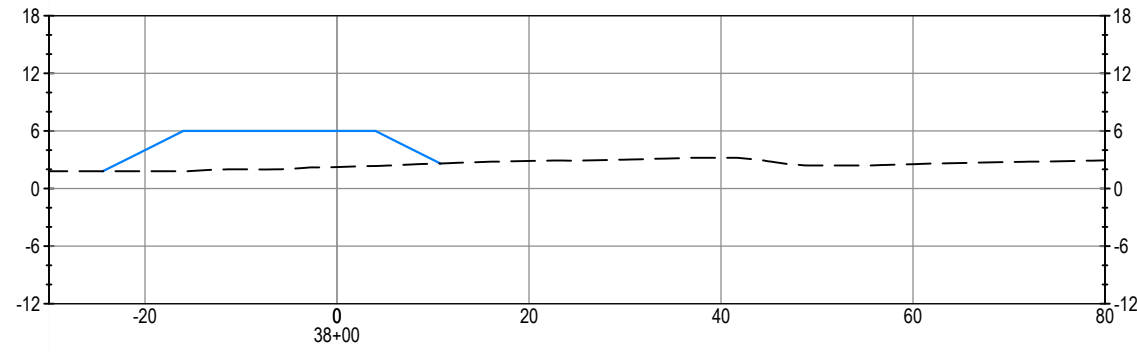
1550 Harbor Drive, Suite 212  
 West Sacramento, CA 95691  
 916-403-5900

RECLAMATION DISTRICT NO. 563  
 FLOOD FIGHT ACCESS ROAD  
 SACRAMENTO COUNTY, CALIFORNIA

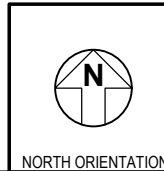
Alignment Option #2  
 SECTIONS  
 STA 22+00 TO STA 32+00

DATE JULY 23, 2020
SHEET IDENTIFICATION <b>C-307</b>
SHEET 9 OF 10
KSN PROJECT FILE NO. 0675-1330

FILE SPEC: P:\0675\_Tyler\_Island\1330\_E\_Walnut\_Grove\_FRRFS\08\_Civil\400\_Plans\020\_CAD\Sheets\200724\_20-Crown-Alignment.dwg  
 PLOT DATE: Jul 24, 2020 - 1:09pm



SUBMITTAL	
%	Date



NO.	DESCRIPTION	DATE	APPR.

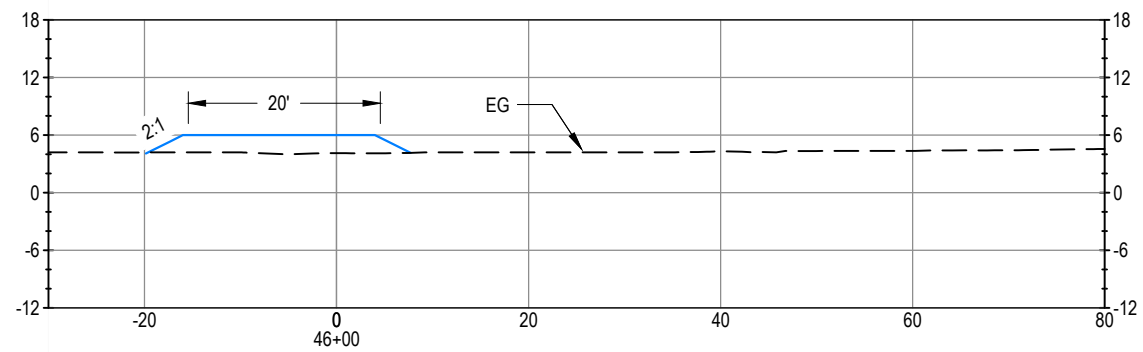
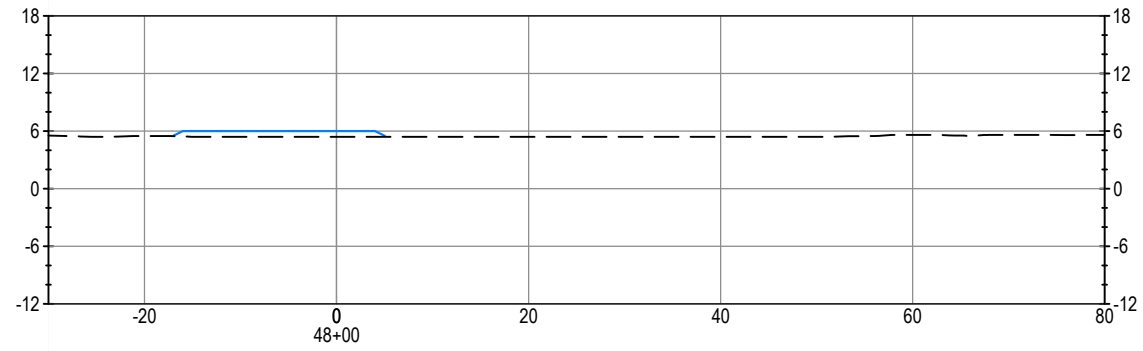
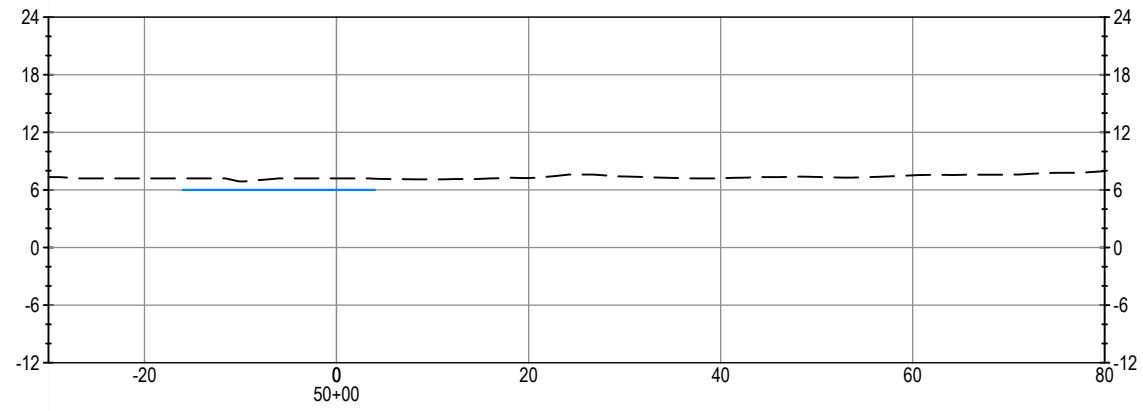
DESIGN BY JCS  
 DRAWN BY JCS  
 CHECK BY JAM  
 HORIZONTAL DATUM  
 CCS83, ZONE 3  
 VERTICAL DATUM  
 NAVD88

DRAWING SCALE  
 1" = 10'  
 ORIGINAL DRAWING SCALE  
 0 1/2" 1"

**20X inc.** **KJELDEN SINNOCK NEUDECK**  
 CIVIL ENGINEERS & LAND SURVEYORS  
 www.ksninc.com  
 711 N Pershing Avenue  
 Stockton, CA 95203  
 209-946-0268  
 1550 Harbor Drive, Suite 212  
 West Sacramento, CA 95691  
 916-403-5900

RECLAMATION DISTRICT NO. 563  
 FLOOD FIGHT ACCESS ROAD  
 SACRAMENTO COUNTY, CALIFORNIA  
**Alignment Option #2**  
**SECTIONS**  
 STA 34+00 TO STA 44+00

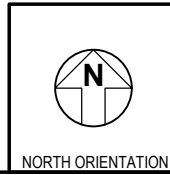
DATE  
 JULY 23, 2020  
 SHEET IDENTIFICATION  
**C-308**  
 SHEET 9 OF 10  
 KSN PROJECT FILE NO.  
 0675-1330



FILE SPEC: P:\0675\_Tyler\_Island\1330\_E\_Walnut\_Grove\_FRRFS\08\_Civil\400\_Plans\020\_CAD\Sheets\200724\_20-Crown-Alignment.dwg  
 PLOT DATE: Jul 24, 2020 - 1:09pm



SUBMITTAL	
%	Date



NO.	DESCRIPTION	DATE	APPR.

DESIGN BY JCS  
 DRAWN BY JCS  
 CHECK BY JAM  
 HORIZONTAL DATUM  
 CCS83, ZONE 3  
 VERTICAL DATUM  
 NAVD88

DRAWING SCALE  
 1" = 10'  
 ORIGINAL DRAWING SCALE  
 0 1/2" 1"



711 N Pershing Avenue  
 Stockton, CA 95203  
 209-946-0268  
 1550 Harbor Drive, Suite 212  
 West Sacramento, CA 95691  
 916-403-5900  
 www.ksninc.com

RECLAMATION DISTRICT NO. 563  
 FLOOD FIGHT ACCESS ROAD  
 SACRAMENTO COUNTY, CALIFORNIA  
 Alignment Option #2  
 SECTIONS  
 STA 46+00 TO STA 50+00

DATE  
 JULY 23, 2020  
 SHEET IDENTIFICATION  
**C-309**  
 SHEET 10 OF 10  
 KSN PROJECT FILE NO.  
 0675-1330