

Project Update

North Vineyard Station Open Space Preserve Trail and Landscaping Project - Elder Creek Phase 4 and Gerber Creek Phase 1

OCTOBER 2020

ISSUE 1

About this Newsletter

This newsletter provides current information about the North Vineyard Station Open Space Preserve Trail and Landscaping Project – Elder Creek Phase 4 and Gerber Creek Phase 1. For your reference, a project exhibit is printed on the back of this newsletter. If you have questions, please contact the project staff listed below.

Background

The North Vineyard Station Specific Plan (NVSSP) Drainage Master Plan (DMP) includes channel improvements for flood control and an open space preserve on Elder and Gerber Creeks.

The proposed Project is located along a section of Elder Creek and Gerber Creek. The Elder Creek Phase 4 section is located west of Elk Grove-Florin Road and north of Gerber Road. The Gerber Creek Phase 1 section is located between Waterman Road and the Central California Traction Railroad. A private developer deepened and widened the Gerber Creek Phase 1 section of the Project in 2016. DWR deepened and widened the Elder Creek Phase 4 section of the Project in 2017.

Preserve plantings and trails included in the NVSSP DMP will be installed on the remaining Elder and Gerber Creek sections over the next few years.

Project Description

The Project creek sections will be landscaped as a natural riparian corridor by planting native trees, shrubs, wetlands, and grasses within the creek bottom, along the creek banks, and surrounding uplands. The Project will also install a multi-use trail along the Gerber Creek Phase 1 section. The Project includes a minimum 5-year landscape monitoring period that begins after plant installation.

Project Updates

The Board of Supervisors approved the project to advertise for construction contractors on October 6, 2020. A second newsletter will be mailed out to provide an update after the project is awarded to a contractor. That newsletter will provide additional contact information for the construction phase of the project.

Project Schedule

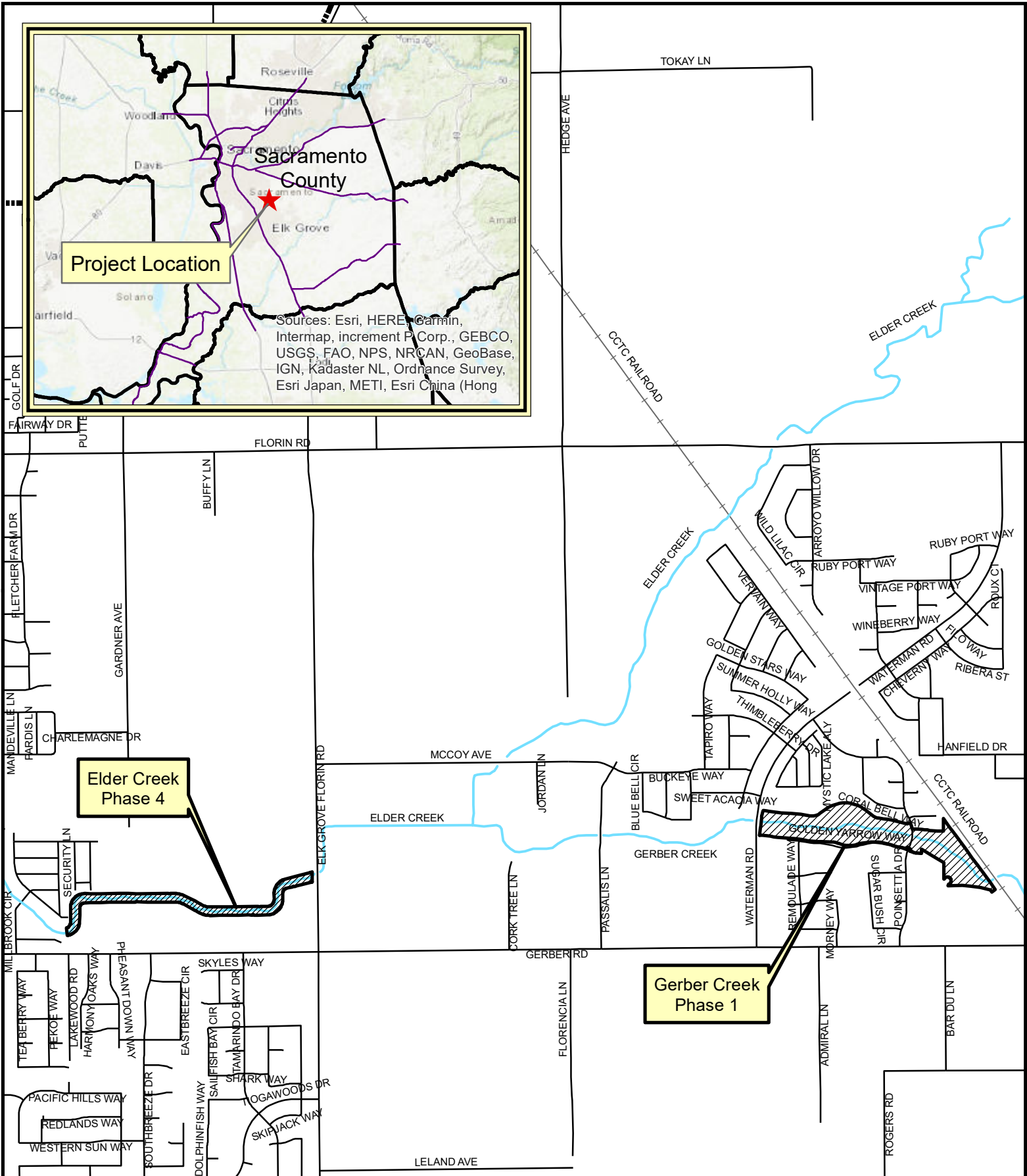
- Project Advertisement – October 2020
- Bid Opening – November 2020
- Trail & Irrigation Construction – June 2021 to October 2021
- Plant Installation – October 2021 to December 2021

All dates are tentative and subject to change

In addition, project information can be viewed online at <https://waterresources.saccounty.net/Pages/Elder-Creek-Phase-4-and-Gerber-Creek-Phase-1-Preserve-Trail-and-Landscaping-Project.aspx>.

For More Information, Please contact:

Michael Meaney
Project/Design Engineer, (916) 874-1321
E-mail: meaneym@saccounty.net



North Vineyard Station Open Space Preserve Trail and Landscaping Project - Elder Creek Phase 4 and Gerber Creek Phase 1
PROJECT VICINITY & LOCATION MAP

SACRAMENTO COUNTY
 Department of Water Resources