

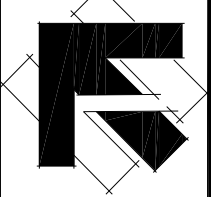
DRAFT!
Subject to Revision

TEMPORARY ALIGNMENT
DUE TO FLORIN
ROAD WIDENING

LEGEND

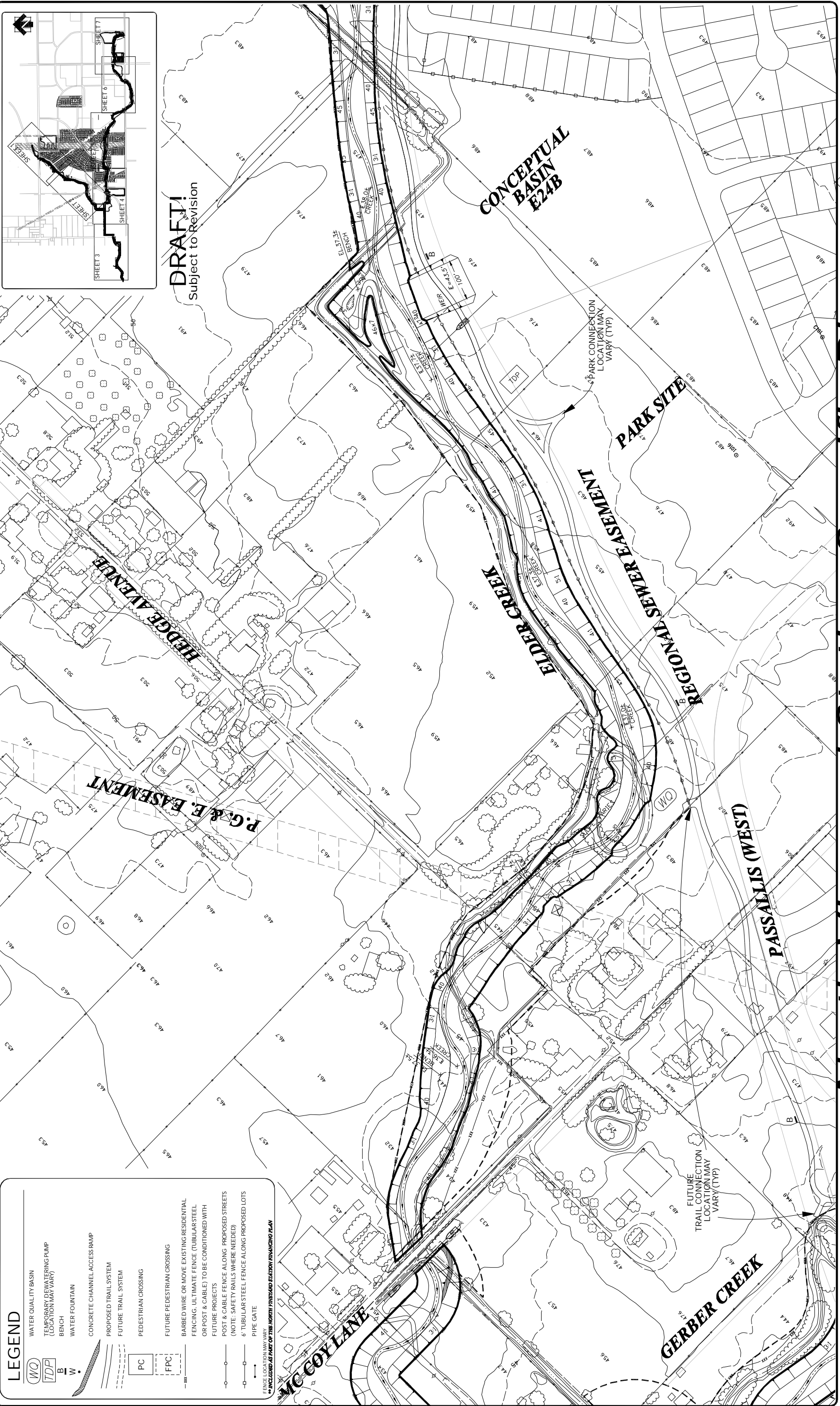
	WATER QUALITY BASIN
	TEMPORARY DEWATERING PUMP (LOCATION MAY VARY)
	BENCH
	WATER FOUNTAIN
	CONCRETE CHANNEL ACCESS RAMP
	PROPOSED TRAIL SYSTEM
	FUTURE TRAIL SYSTEM
	PEDESTRIAN CROSSING
	FUTURE PEDESTRIAN CROSSING
	BARBED WIRE OR MOVE EXISTING RESIDENTIAL FENCING, ULTIMATE FENCE (TUBULAR STEEL OR POST & CABLE) TO BE CONDITIONED WITH FUTURE PROJECTS
	POST & CABLE FENCE ALONG PROPOSED STREETS (NOTE: SAFETY RAILS WHERE NEEDED)
	6" TUBULAR STEEL FENCE ALONG PROPOSED LOTS
	PIPE GATE
	FENCE LOCATION MARK

**** INCLUDED AS PART OF THE NORTH VINEYARD STATION FINANCING PLAN**



North Vineyard Station Specific Plan Proposed Drainage Corridor Improvements

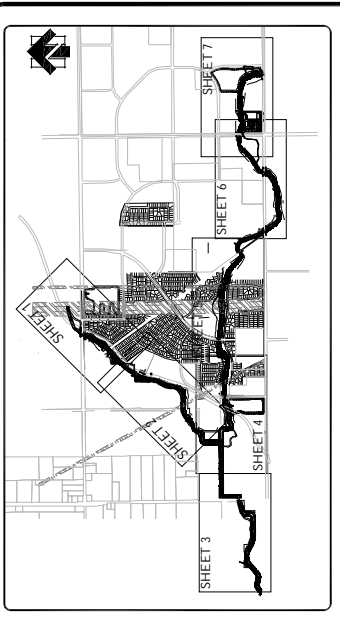
MACKAY & SOMPS
CIVIL ENGINEERS, INC.
CIVIL ENGINEERING • LAND PLANNING • LAND SURVEYING
SACRAMENTO, CALIFORNIA
Job Number: 7536-RW
Revised: 05/05/05
Revised From: 04/05/05



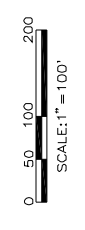
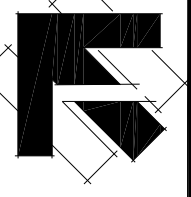
LEGEND

- WATER QUALITY BASIN
- TEMPORARY DEWATERING PUMP (LOCATION MAY VARY)
- BENCH
- WATER FOUNTAIN
- CONCRETE CHANNEL ACCESS RAMP
- PROPOSED TRAIL SYSTEM
- FUTURE TRAIL SYSTEM
- PEDESTRIAN CROSSING
- FUTURE PEDESTRIAN CROSSING
- BARBED WIRE OR MOVE EXISTING RESIDENTIAL FENCING, ULTIMATE FENCE (TUBULAR STEEL OR POST & CABLE) TO BE CONDITIONED WITH FUTURE PROJECTS
- POST & CABLE FENCE ALONG PROPOSED STREETS (NOTE: SAFETY RAILS WHERE NEEDED)
- 6" TUBULAR STEEL FENCE ALONG PROPOSED LOTS
- PIPE GATE
- FENCE LOCATION MAY VARY
- ENCLOSED AS PART OF THE NORTH VINEYARD STATION FINANCING PLAN

WO
 TDP
 B
 W
 [Symbol]
 [Symbol]
 [Symbol]
 PC
 FPC
 [Symbol]
 [Symbol]
 [Symbol]
 [Symbol]

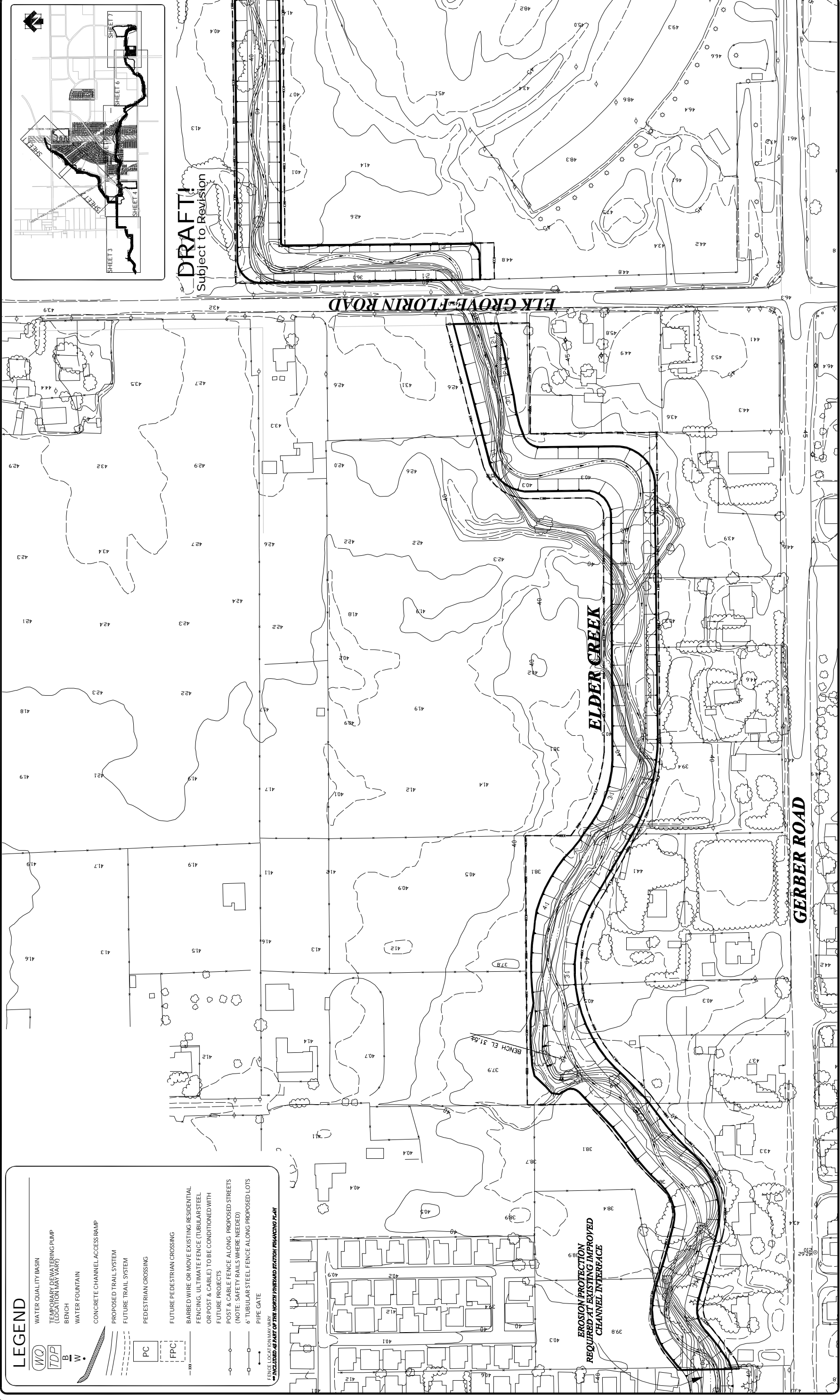


DRAFT!
Subject to Revision



North Vineyard Station Specific Plan Proposed Drainage Corridor Improvements

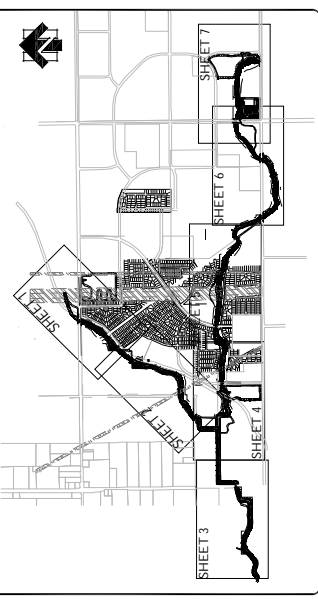
MACKAY & SOMPS
 CIVIL ENGINEERS, INC.
 CIVIL ENGINEERING • LAND PLANNING • LAND SURVEYING
 SACRAMENTO, CALIFORNIA
 Job Number: 7536-RW
 Revised: 05/05/05
 Revised From: 04/05/05



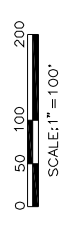
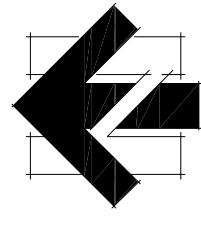
LEGEND

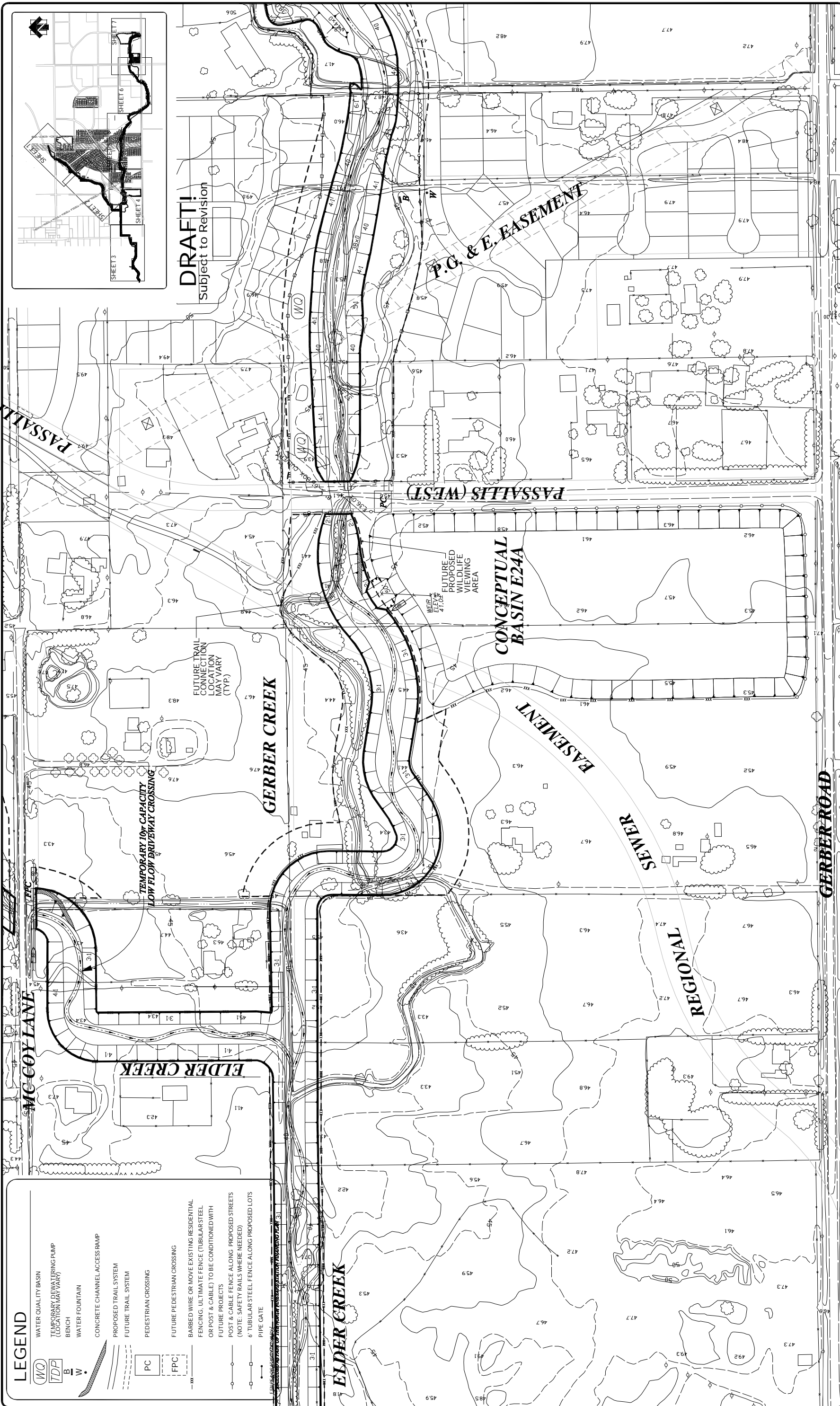
- WQ
- TEMPORARY DEWATERING PUMP (LOCATION MAY VARY)
- TDP
- B
- W
- CONCRETE CHANNEL ACCESS RAMP
- PROPOSED TRAIL SYSTEM
- FUTURE TRAIL SYSTEM
- PEDESTRIAN CROSSING
- PC
- FPC
- BARBED WIRE OR MOVE EXISTING RESIDENTIAL FENCING, ULTIMATE FENCE (TUBULAR STEEL OR POST & CABLE) TO BE CONDITIONED WITH FUTURE PROJECTS
- POST & CABLE FENCE ALONG PROPOSED STREETS (NOTE: SAFETY RAILS WHERE NEEDED)
- 6" TUBULAR STEEL FENCE ALONG PROPOSED LOTS
- PIPE GATE
- FENCE LOCATION MAY VARY
- **INCLUDED AS PART OF THE NORTH VINEYARD STATION FINANCING PLAN****

DRAFT!
Subject to Revision



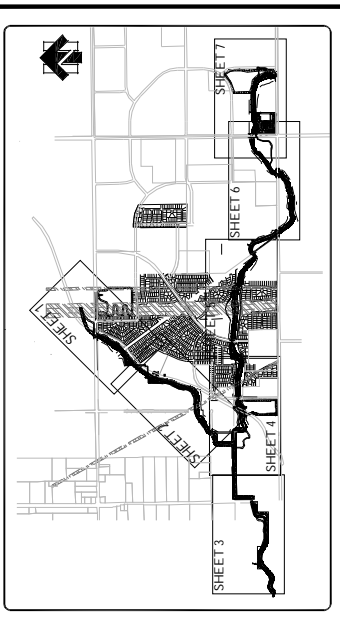
MACKAY & SOMPS North Vineyard Station Specific Plan Proposed Drainage Corridor Improvements



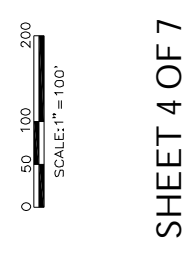


LEGEND

	WATER QUALITY BASIN
	TEMPORARY DEWATERING PUMP (LOCATION MAY VARY)
	BENCH
	WATER FOUNTAIN
	CONCRETE CHANNEL ACCESS RAMP
	PROPOSED TRAIL SYSTEM
	FUTURE TRAIL SYSTEM
	PEDESTRIAN CROSSING
	FUTURE PEDESTRIAN CROSSING
	BARBED WIRE OR MOVE EXISTING RESIDENTIAL FENCING, ULTIMATE FENCE (TUBULAR STEEL OR POST & CABLE) TO BE CONDITIONED WITH FUTURE PROJECTS
	POST & CABLE FENCE ALONG PROPOSED STREETS (NOTE: SAFETY RAILS WHERE NEEDED)
	6" TUBULAR STEEL FENCE ALONG PROPOSED LOTS
	PIPE GATE
	WATER QUALITY BASIN
	TEMPORARY DEWATERING PUMP (LOCATION MAY VARY)
	BENCH
	WATER FOUNTAIN
	CONCRETE CHANNEL ACCESS RAMP
	PROPOSED TRAIL SYSTEM
	FUTURE TRAIL SYSTEM
	PEDESTRIAN CROSSING
	FUTURE PEDESTRIAN CROSSING
	BARBED WIRE OR MOVE EXISTING RESIDENTIAL FENCING, ULTIMATE FENCE (TUBULAR STEEL OR POST & CABLE) TO BE CONDITIONED WITH FUTURE PROJECTS
	POST & CABLE FENCE ALONG PROPOSED STREETS (NOTE: SAFETY RAILS WHERE NEEDED)
	6" TUBULAR STEEL FENCE ALONG PROPOSED LOTS
	PIPE GATE



DRAFT!
Subject to Revision



MACKAY & SOMPS

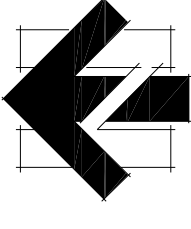
CIVIL ENGINEERS, INC.

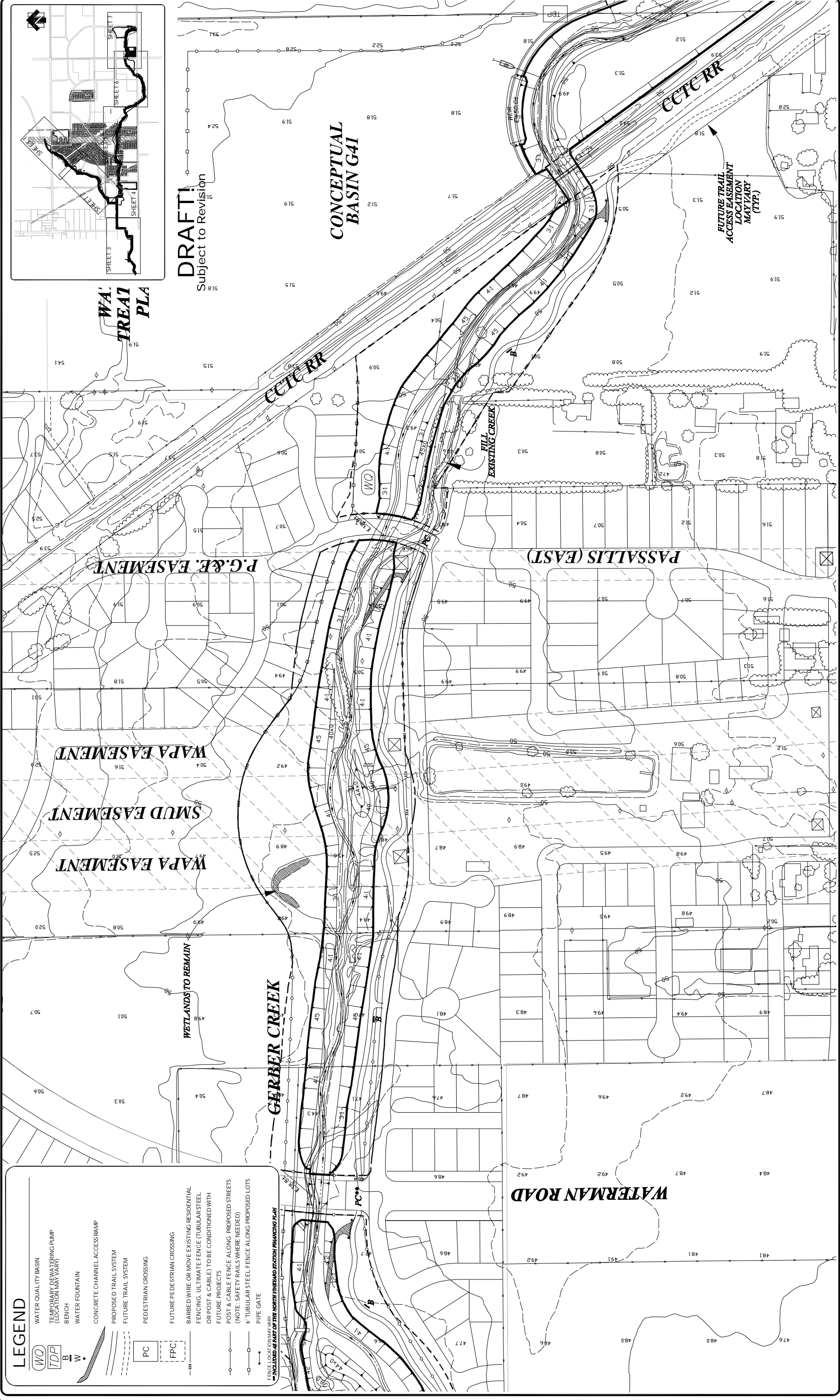
CIVIL ENGINEERING • LAND PLANNING • LAND SURVEYING
SACRAMENTO, CALIFORNIA
Job Number: 7536-RW

North Vineyard Station Specific Plan

Proposed Drainage Corridor Improvements

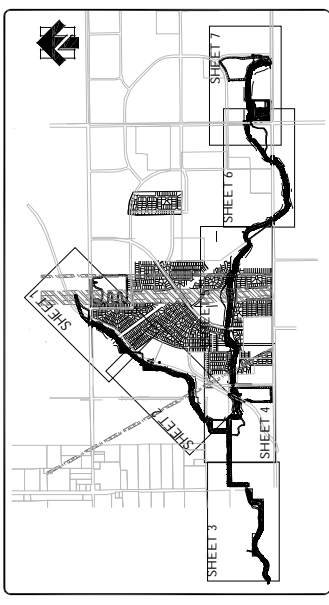
Revised From: 04/05/05
Revised: 05/05/05



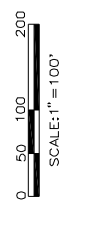
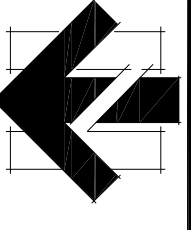


LEGEND

	WATER QUALITY BASIN
	TEMPORARY DEWATERING PUMP (LOCATION MAY VARY)
	BENCH
	WATER FOUNTAIN
	CONCRETE CHANNEL ACCESS RAMP
	PROPOSED TRAIL SYSTEM
	FUTURE TRAIL SYSTEM
	PEDESTRIAN CROSSING
	FUTURE PEDESTRIAN CROSSING
	BARBED WIRE OR MOVE EXISTING RESIDENTIAL FENCING, ULTIMATE FENCE (TUBULAR STEEL OR POST & CABLE) TO BE CONDITIONED WITH FUTURE PROJECTS
	POST & CABLE FENCE ALONG PROPOSED STREETS (NOTE: SAFETY RAILS WHERE NEEDED)
	6" TUBULAR STEEL FENCE ALONG PROPOSED LOTS
	PIPE GATE
	FENCE LOCATION (MAY VARY)
	**INCLUDED AS PART OF THE NORTH VINEYARD STATION FINANCING PLAN

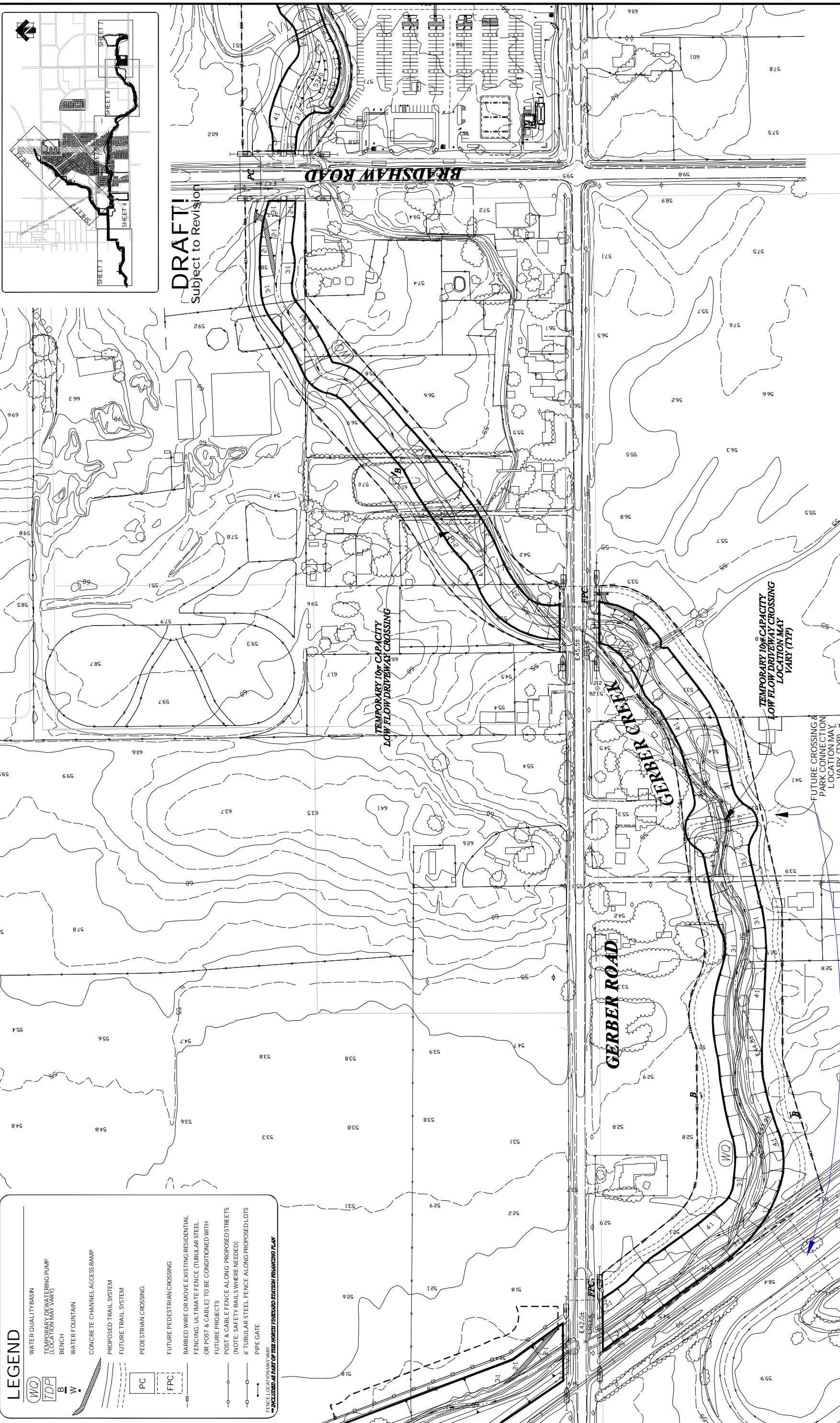


DRAFT!
Subject to Revision



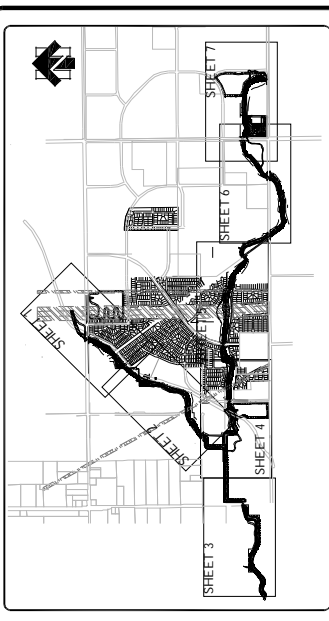
MACKAY & SOMPS North Vineyard Station Specific Plan Proposed Drainage Corridor Improvements

CIVIL ENGINEERS, INC.
 CIVIL ENGINEERING • LAND PLANNING • LAND SURVEYING
 SACRAMENTO, CALIFORNIA
 Job Number: 7536-RW
 Revised: 05/05/05
 Revised From: 04/05/05

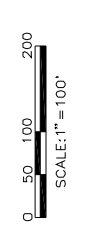
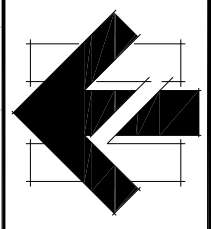


LEGEND

- W/Q WATER QUALITY BASIN
- T/D/P TEMPORARY DEWATERING PUMP (LOCATION MAY VARY)
- B BENCH
- W WATER FOUNTAIN
- CONCRETE CHANNEL ACCESS RAMP
- PROPOSED TRAIL SYSTEM
- FUTURE TRAIL SYSTEM
- PEDESTRIAN CROSSING
- FUTURE PEDESTRIAN CROSSING
- BARBED WIRE OR MOVE EXISTING RESIDENTIAL FENCING. ULTIMATE FENCE (TUBULAR STEEL OR POST & CABLE) TO BE CONDITIONED WITH FUTURE PROJECTS
- POST & CABLE FENCE ALONG PROPOSED STREETS (NOTE: SAFETY RAILS WHERE NEEDED)
- 6" TUBULAR STEEL FENCE ALONG PROPOSED LOTS
- PIPE GATE
- FENCE LOCATION MAY VARY
- PROPOSED AS PART OF THE NORTH VINEYARD STATION FENCING PLAN



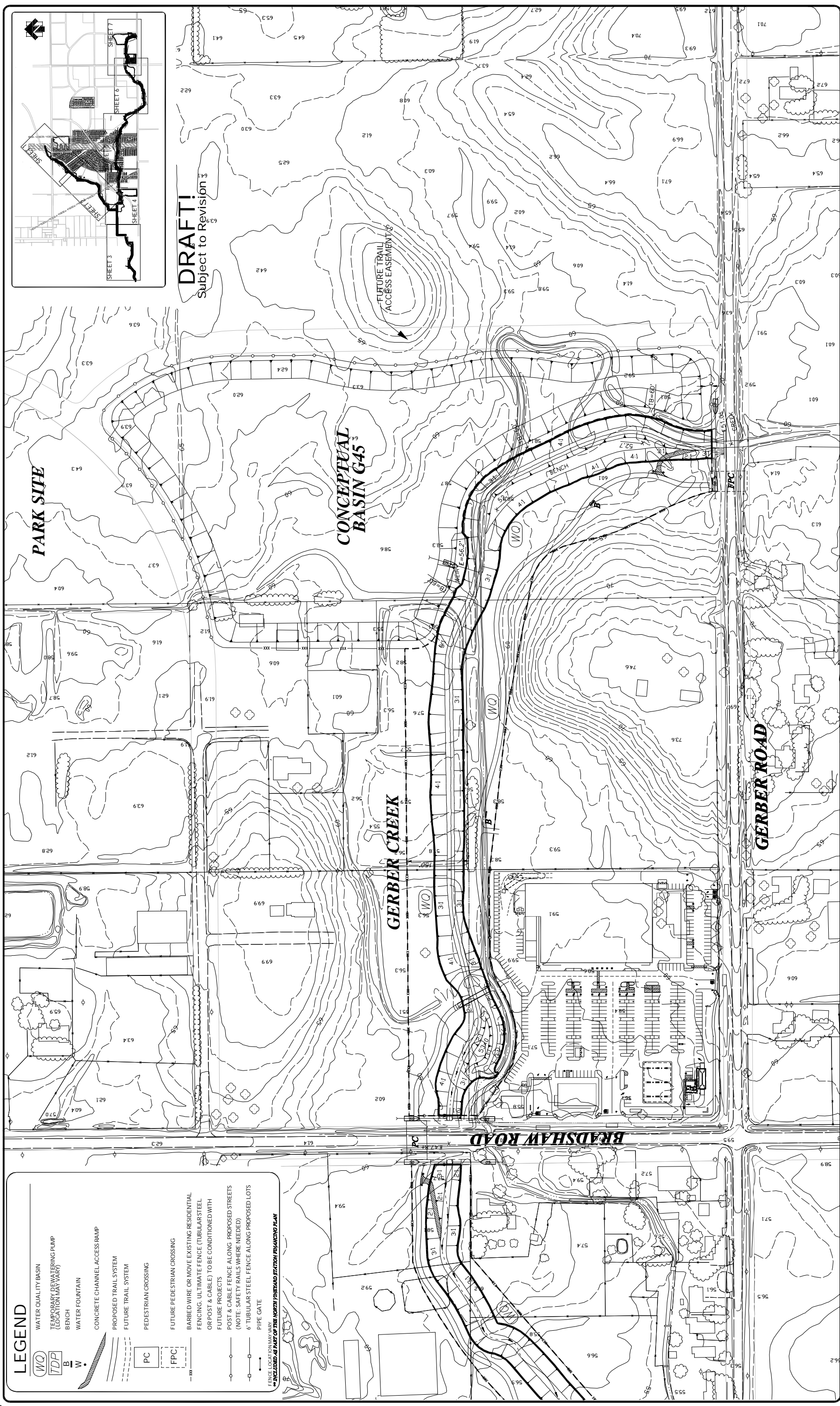
DRAFT!
Subject to Revision



MACKAY & SOMPS *North Vineyard Station Specific Plan*
Proposed Drainage Corridor Improvements

CIVIL ENGINEERS, INC.
 CIVIL ENGINEERING • LAND PLANNING • LAND SURVEYING
 SACRAMENTO, CALIFORNIA
 (916) 929-6092
 Revised: 05/05/05

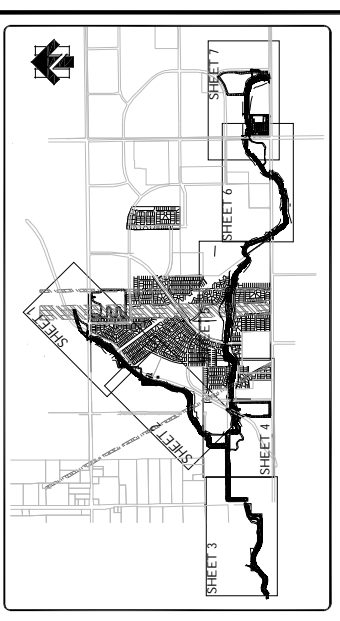
Job Number: 7536-RW
 Revised From: 04/05/05



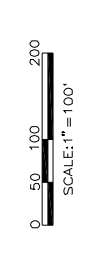
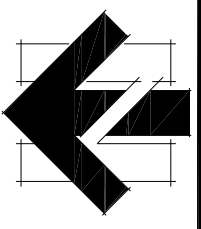
LEGEND

	WATER QUALITY BASIN
	TEMPORARY DEWATERING PUMP (LOCATION MAY VARY)
	BENCH
	WATER FOUNTAIN
	CONCRETE CHANNEL ACCESS RAMP
	PROPOSED TRAIL SYSTEM
	FUTURE TRAIL SYSTEM
	PEDESTRIAN CROSSING
	FUTURE PEDESTRIAN CROSSING
	BARBED WIRE OR MOVE EXISTING RESIDENTIAL FENCING, ULTIMATE FENCE (TUBULAR STEEL OR POST & CABLE) TO BE CONDITIONED WITH FUTURE PROJECTS
	POST & CABLE FENCE ALONG PROPOSED STREETS (NOTE: SAFETY RAILS WHERE NEEDED)
	6" TUBULAR STEEL FENCE ALONG PROPOSED LOTS
	PIPE GATE
	FENCE LOCATION MARK

**** INCLUDED AS PART OF THE NORTH VINEYARD STATION FINANCING PLAN**



DRAFT!
Subject to Revision



Mackay & Sumps North Vineyard Station Specific Plan

Proposed Drainage Corridor Improvements

MACKAY & SOMPS
 CIVIL ENGINEERS, INC.
 CIVIL ENGINEERING • LAND PLANNING • LAND SURVEYING
 SACRAMENTO, CALIFORNIA
 Job Number: 7536-RW
 Revised: 05/05/05
 Revised From: 04/05/05