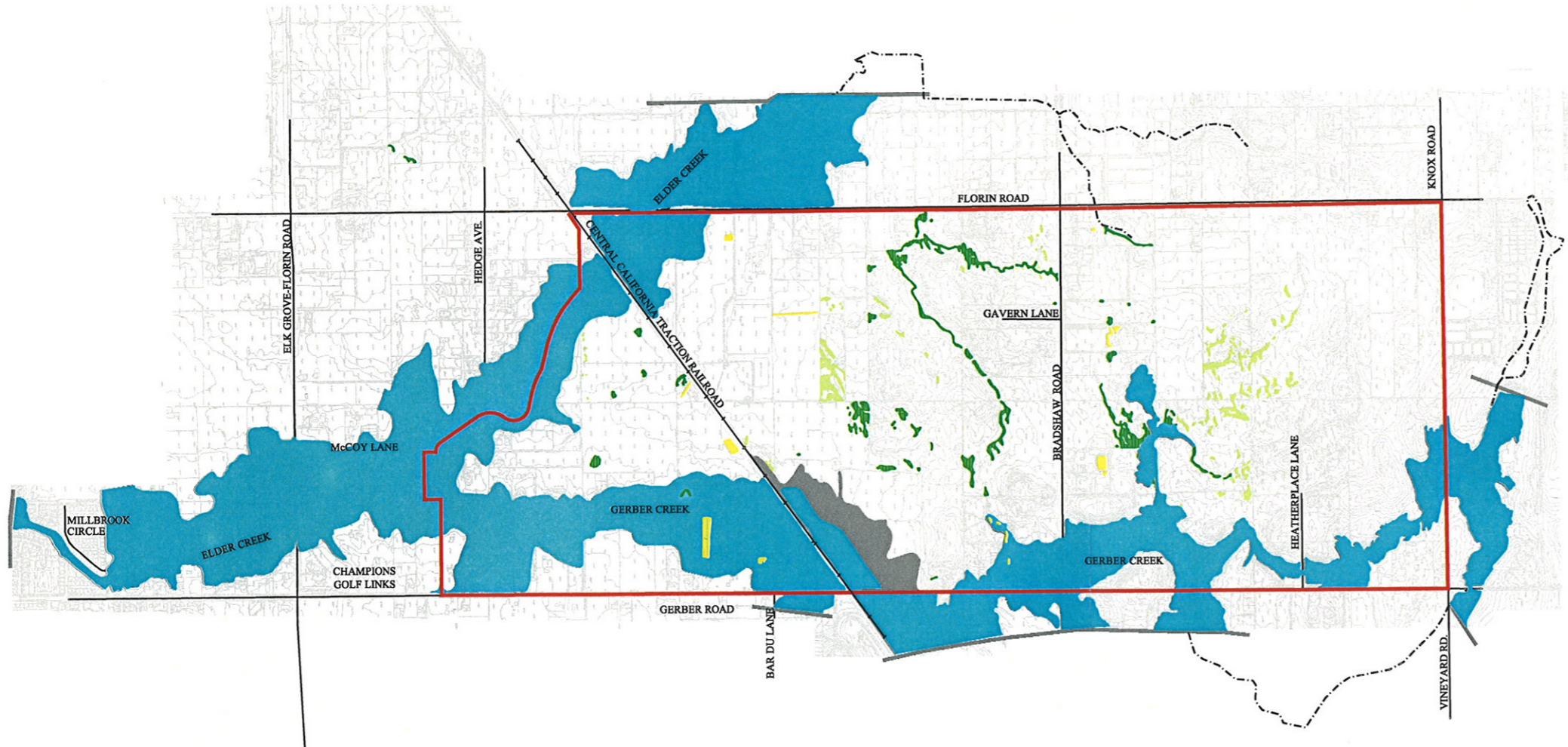


File: I:\PROJECTS\208-02 NVSSP\CA\DRIFT 11-6-02\PHASE1\FPGURE.DWG Last edited: 11/08/02 @ 11:19 by: jpicke



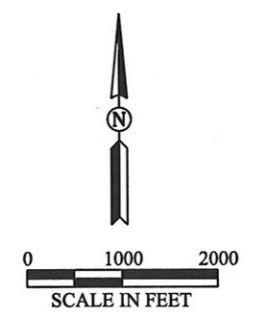
- LEGEND**
- 100-Year Floodplain (UNET Model)
  - Removed 100-Year Floodplain from Previous Phase
  - Vernal Pool
  - Seasonal Wetland
  - Stock Pond
  - NVSSP Boundary
  - Creek
  - Major Road
  - Railroad
  - Limit of Floodplain Mapping

**NOTE**

The 100-year floodplain is based upon existing conditions (UNET Model) derived from Sacramento County Department of Public Works, Water Resources Division, "Elder and Gerber Creeks Technical Appendix: UNET Analysis," dated January 1997.

**SOURCE**

The wetland delineation is based upon the "North Vineyard Station Specific Plan Technical Appendix: Biotic Resources," prepared by Sugnet and Associates Environmental Consultants, dated May 3, 1996.



**REVISED DRAFT**

NORTH VINEYARD STATION SPECIFIC PLAN  
DRAINAGE MASTER PLAN  
UPDATE AND PHASING

**PHASE A1**  
**RESIDUAL 100-YEAR FLOODPLAIN**

WOOD RODGERS, INC.  
SACRAMENTO, CALIFORNIA

FIGURE 12