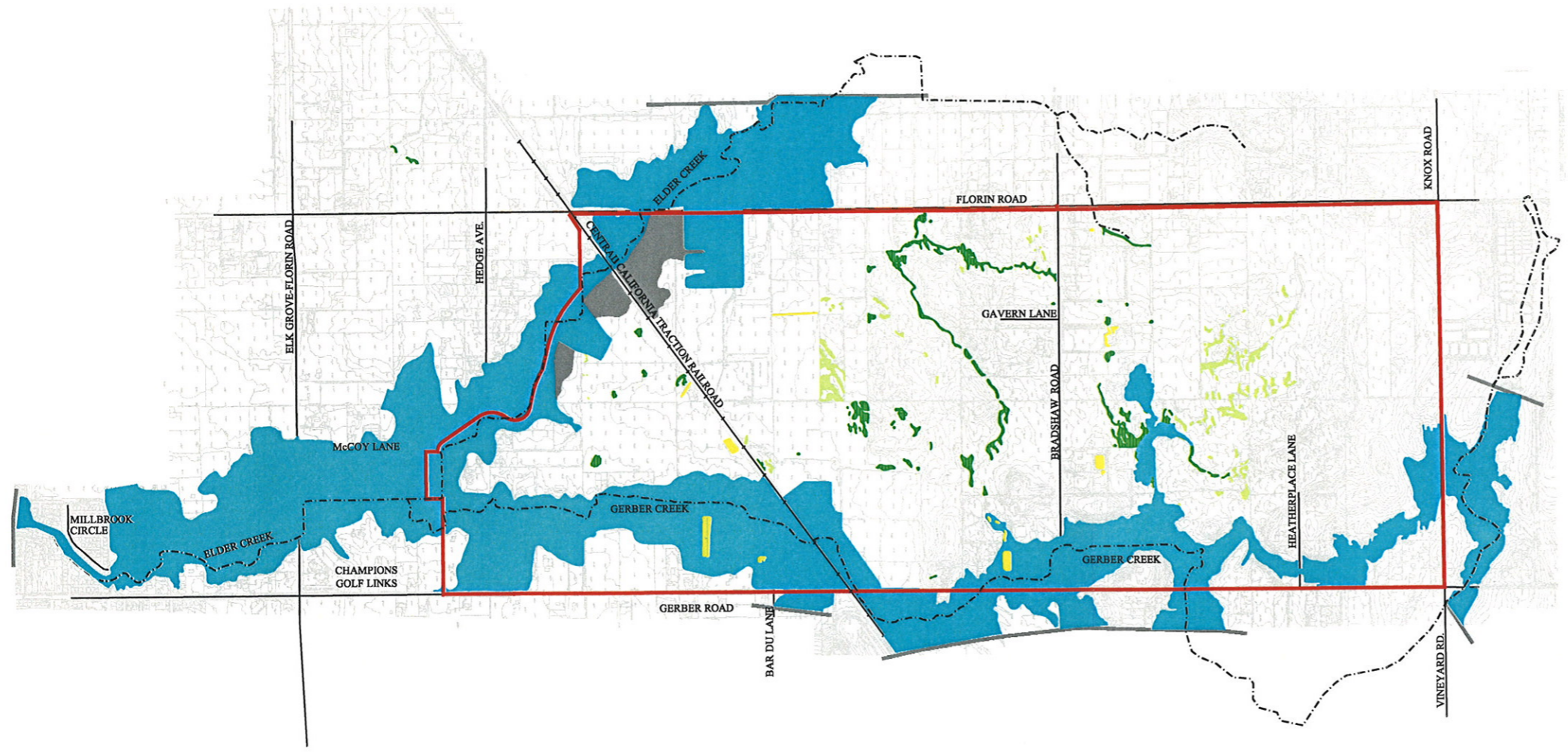


File: I:\PROJECTS\2008-02 NVSSA\CAD\DRMT_11-6-02\11_25PHASE2\Figure.DWG Last edited: 01/14/03 @ 11:05 by: leurd



LEGEND

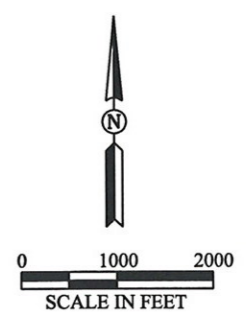
- 100-Year Floodplain (UNET Model)
- Removed 100-Year Floodplain from Previous Phase
- Vernal Pool
- Seasonal Wetland
- Stock Pond
- NVSSP Boundary
- Creek
- Major Road
- Railroad
- Limit of Floodplain Mapping

NOTE

The 100-year floodplain is based upon existing conditions (UNET Model) derived from Sacramento County Department of Public Works, Water Resources Division, "Elder and Gerber Creeks Technical Appendix: UNET Analysis," dated January 1997.

SOURCE

The wetland delineation is based upon the "North Vineyard Station Specific Plan Technical Appendix: Biotic Resources," prepared by Sugnet and Associates Environmental Consultants, dated May 3, 1996.



REVISED DRAFT

NORTH VINEYARD STATION SPECIFIC PLAN
 DRAINAGE MASTER PLAN
 UPDATE AND PHASING
PHASE A2
RESIDUAL 100-YEAR FLOODPLAIN
 WOOD RODGERS, INC.
 SACRAMENTO, CALIFORNIA

FIGURE 13