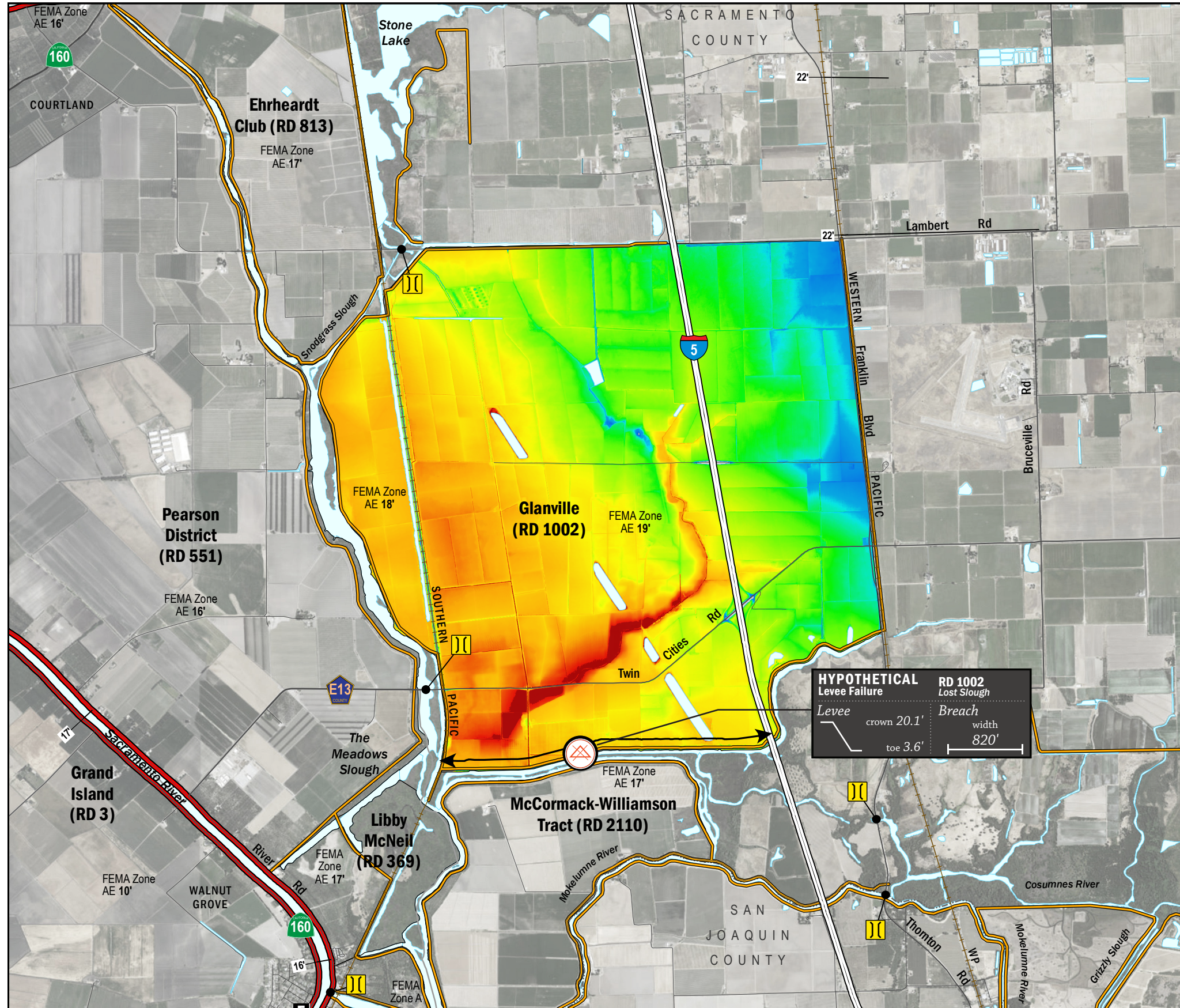


# ESTIMATED FLOOD DEPTHS



## LEGEND

**Hypothetical Levee Failure Location**  
Arrows Indicate Breach Extents

18' **Effective FEMA Base Flood Elevation (feet)**  
(Date 2/16/2012)

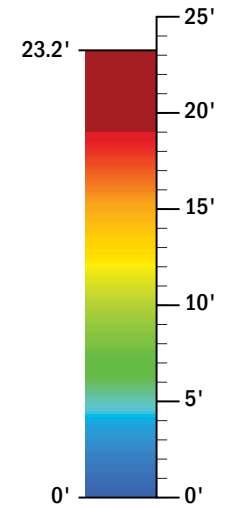
### LEVEES

**Project**  
 **Non-Project**

### CRITICAL INFRASTRUCTURE

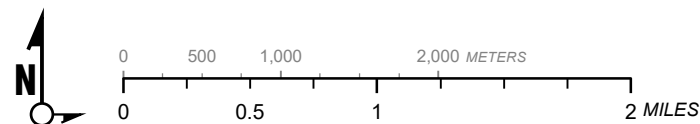
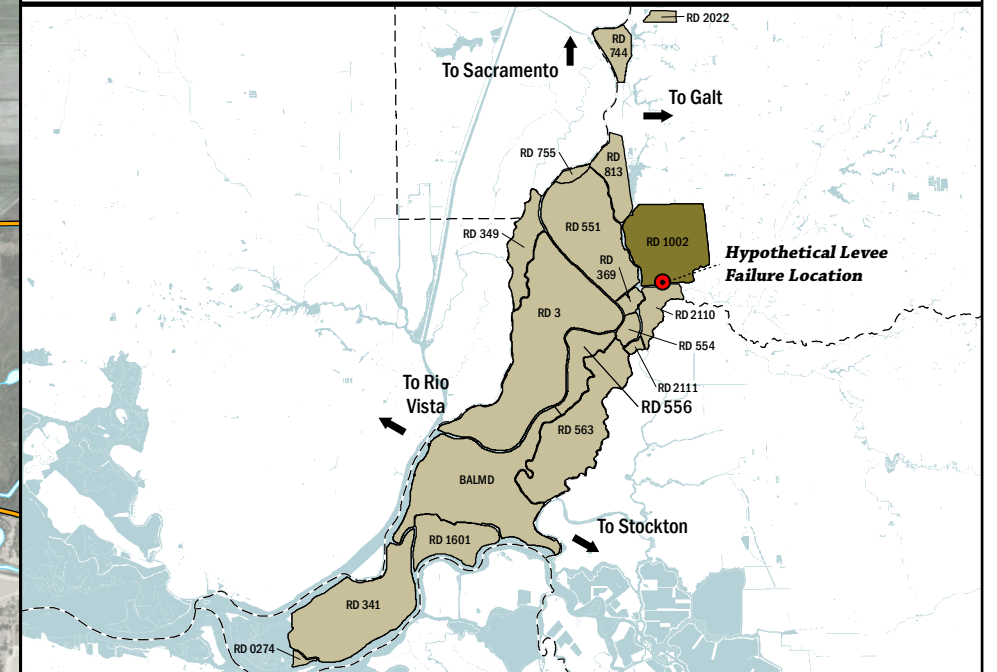
**Bridge Over Waterway**  
 **Fire Station**  
 **Police Station**  
 **School**

### ESTIMATED FLOOD DEPTH (feet)



### NOTES

1. The hypothetical levee failure location is arbitrary. The flood depth results are approximate. Similar results would occur from a failure anywhere along the Lost Slough levee.
2. Maximum water surface elevation will vary between elevation 17.0'-19.0' (NAVD88)
3. The time to maximum depth after levee failure is approximately 1 day.
4. Elevations are provided in NAVD88 datum.
5. FEMA Zone AE Elevation 19.0' (NAVD88) is the 1% annual chance base flood designation for RD 1002 due to non-accredited levees.
6. Approximate breach opening width was based on the difference from the maximum water surface elevation to the landside toe times 50.



1" = 4000 ft  
1:48,000

Delta Flood Emergency Safety Plan  
Sacramento County, California

RD 1002



ESTIMATED FLOOD DEPTHS FOR A HYPOTHETICAL  
LEVEE FAILURE LOCATED AT LOST SLOUGH

May 2017

Figure D1A