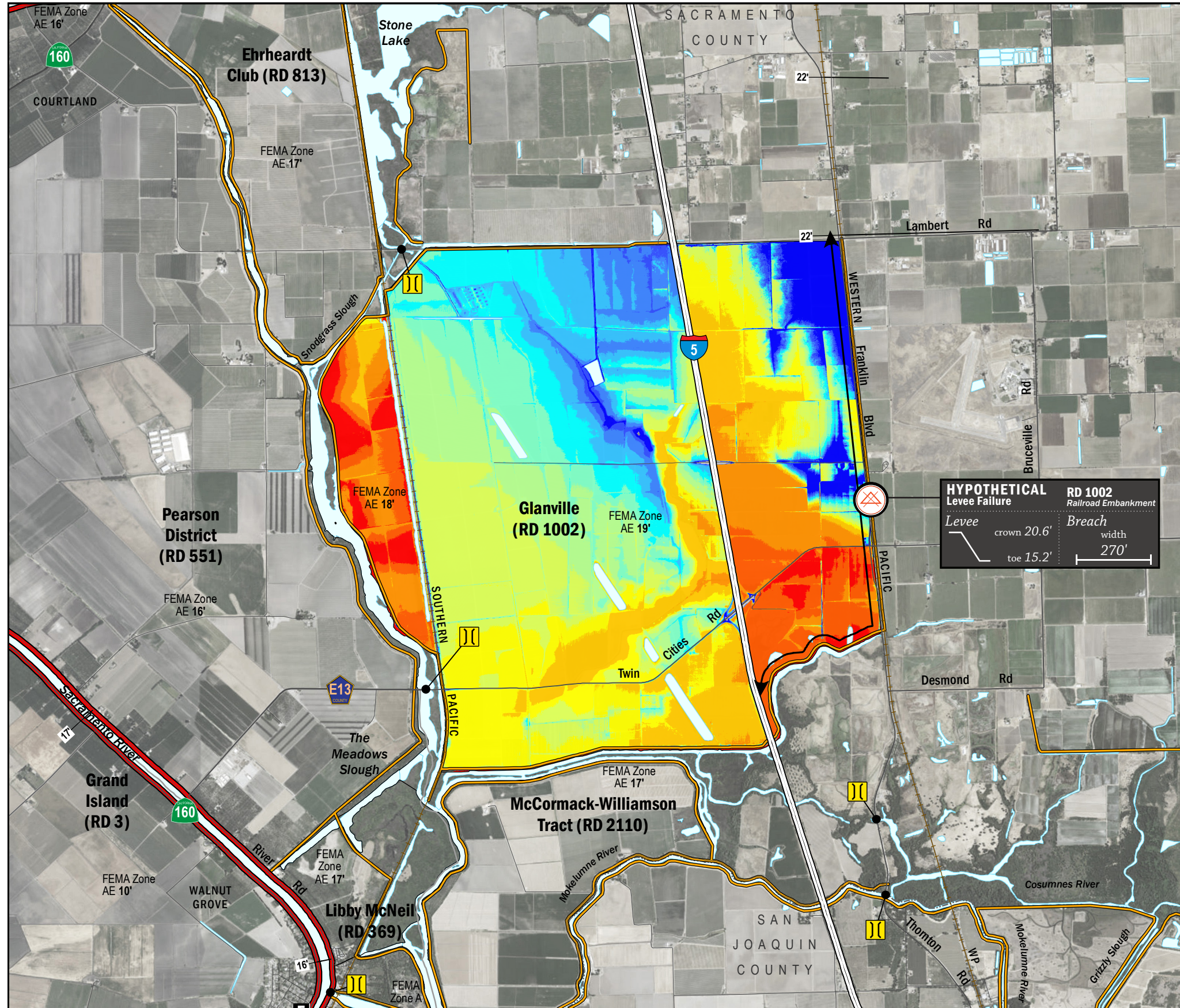


# TIME OF INUNDATION



## LEGEND

**Hypothetical Levee Failure Location**  
Arrows Indicate Breach Extents

18' Effective FEMA Base Flood Elevation (feet)  
(Date 2/16/2012)

**LEVEES**

- Project
- Non-Project

**CRITICAL INFRASTRUCTURE**

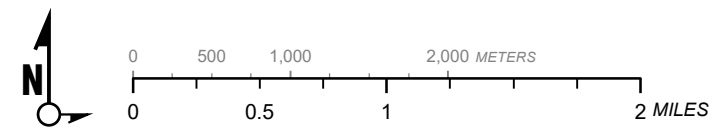
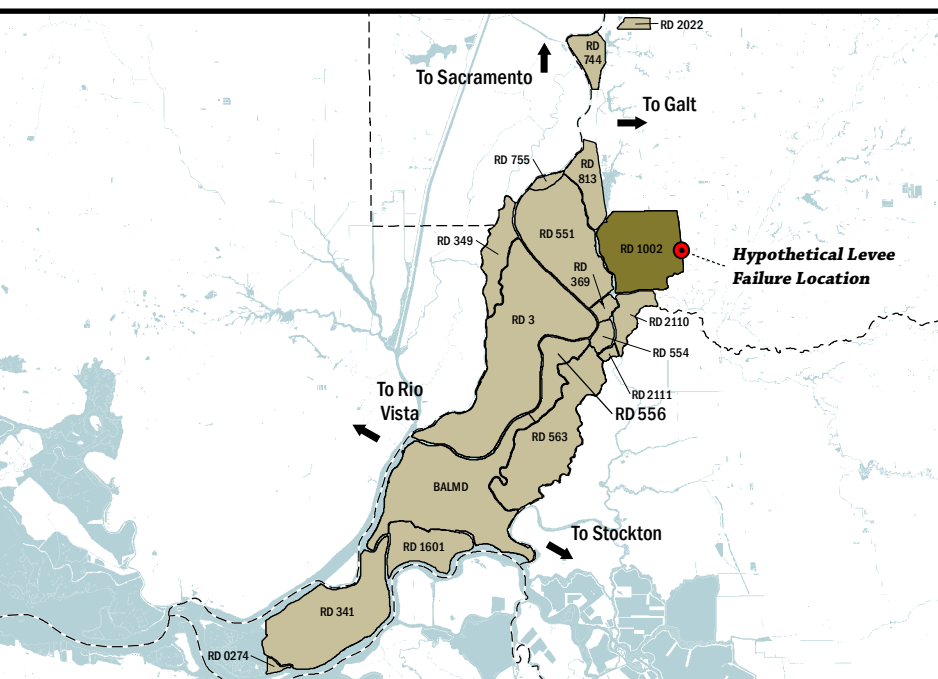
- Bridge Over Waterway
- Fire Station
- Police Station
- School

**TIME TO 1<sup>FT</sup> INUNDATION**

0 hrs
2 hr
4 hrs
6 hrs
8 hrs
10 hrs
12 hrs
14 hrs
16 hrs
18 hrs
20 hrs
22 hrs
24 hrs
48 hrs

----- DAY 1  
----- DAY 2

- NOTES**
1. The hypothetical levee failure is arbitrary. The time to one-foot of inundation is approximate. Similar results would occur within the vicinity of the levee failure shown on the map.
  2. Elevations are provided in NAVD88 datum.
  3. The levee failure opening width was an approximation based on the difference between the maximum water surface elevation and the landside toes times 50.



1" = 4000 ft  
1:48,000

Delta Flood Emergency Safety Plan  
Sacramento County, California

RD 1002



ESTIMATED TIME OF INUNDATION FOR A HYPOTHETICAL  
LEVEE FAILURE LOCATED AT RAILROAD EMBANKMENT

May 2017

Figure D2B