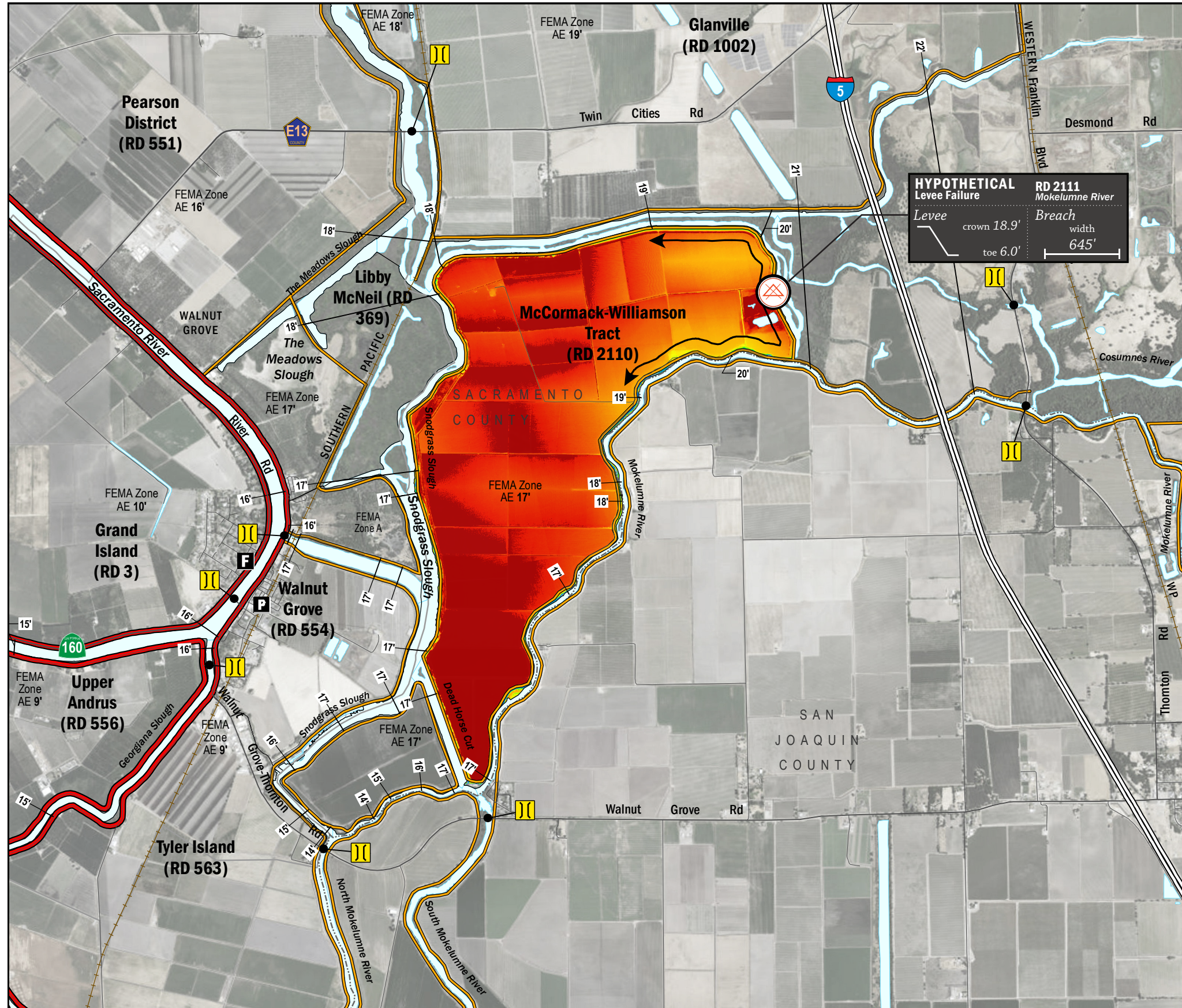


ESTIMATED FLOOD DEPTHS



HYPOTHETICAL Levee Failure
 RD 2111 Mokelumne River
 Levee crown 18.9' toe 6.0'
 Breach width 645'

LEGEND

ESTIMATED FLOOD DEPTH (feet)

LEVEES

- Project (Red line)
- Non-Project (Orange line)

CRITICAL INFRASTRUCTURE

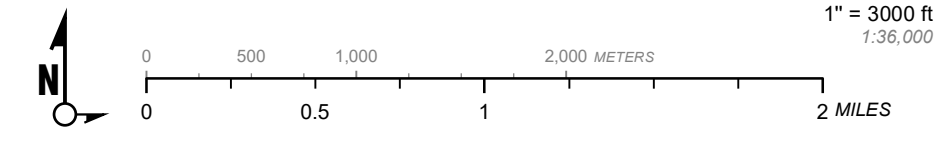
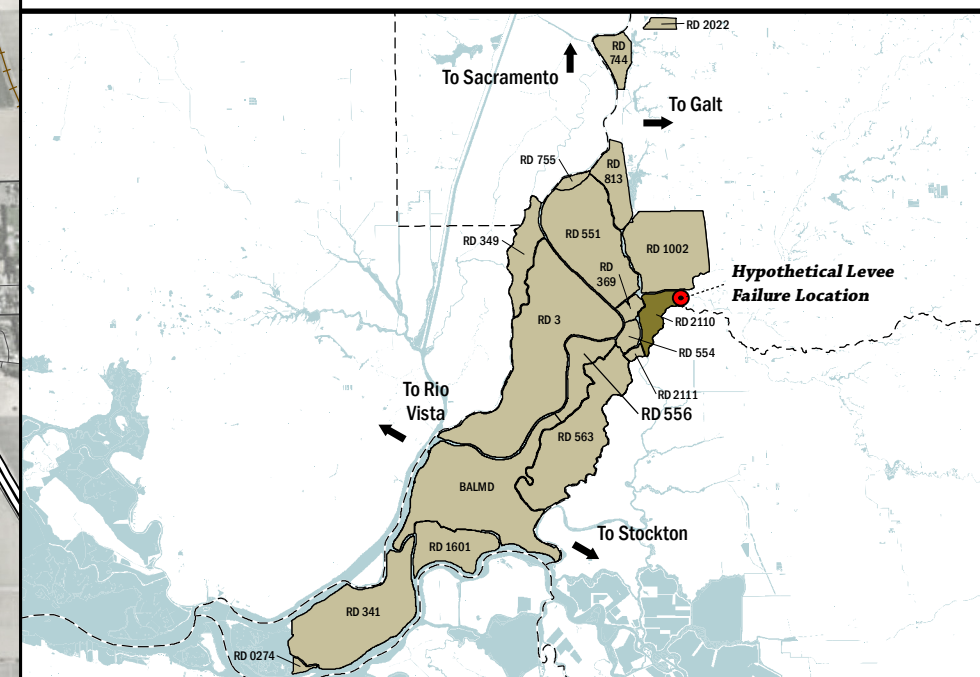
- Bridge Over Waterway (Yellow double line)
- Fire Station (F icon)
- Police Station (P icon)
- School (S icon)

Hypothetical Levee Failure Location
 Arrows Indicate Breach Extents

18' Effective FEMA Base Flood Elevation (feet) (Date 2/16/2012)

NOTES

- The hypothetical levee failure location is arbitrary. Similar results would occur from a Mokelumne River levee failure within the limits shown on the map. The depth of flooding after failure will vary based on operations (flow and volume) of the Mokelumne River.
- Maximum water surface elevation will vary between elevation 18.0'-20.0' (NAVD88)
- The time to maximum depth after levee failure is approximately 1 day.
- Elevations are provided in NAVD88 datum.
- FEMA Zone AE Elevation 17.0' (NAVD88) is the 1% annual chance base flood designation for RD 2110 due to non-accredited levees.
- The levee failure opening width was an approximation based on the difference between the maximum water surface elevation and the landside toe times 50.



Delta Flood Emergency Safety Plan
 Sacramento County, California



ESTIMATED FLOOD DEPTHS FOR A HYPOTHETICAL
 LEVEE FAILURE LOCATED AT MOKELUMNE RIVER

May 2017

Figure D1A

RD 2110