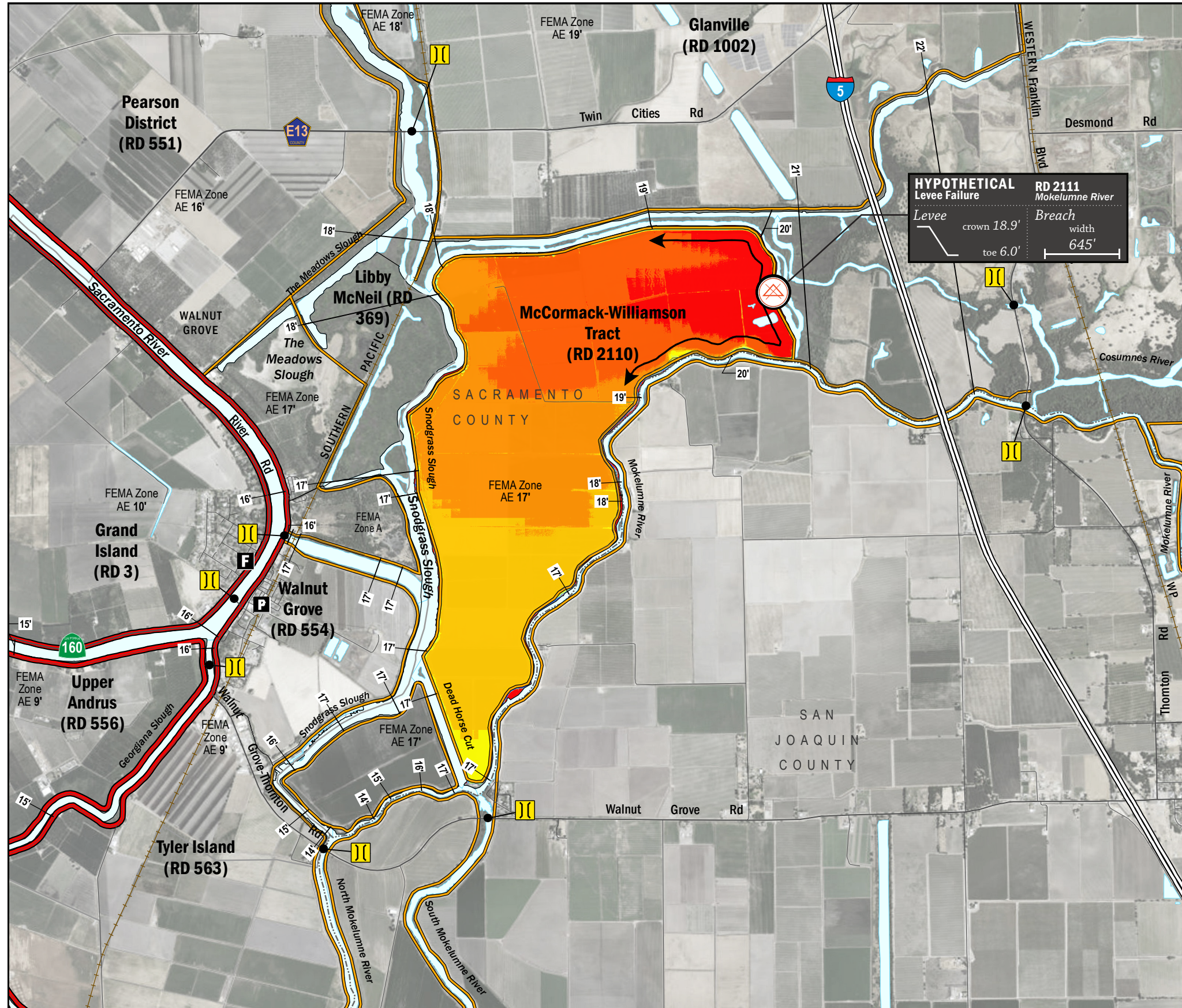


# TIME OF INUNDATION



## LEGEND

**Hypothetical Levee Failure Location**  
Arrows Indicate Breach Extents

18' — Effective FEMA Base Flood Elevation (feet)  
(Date 2/16/2012)

**LEVEES**

- Project
- Non-Project

**CRITICAL INFRASTRUCTURE**

- Bridge Over Waterway
- Fire Station
- Police Station
- School

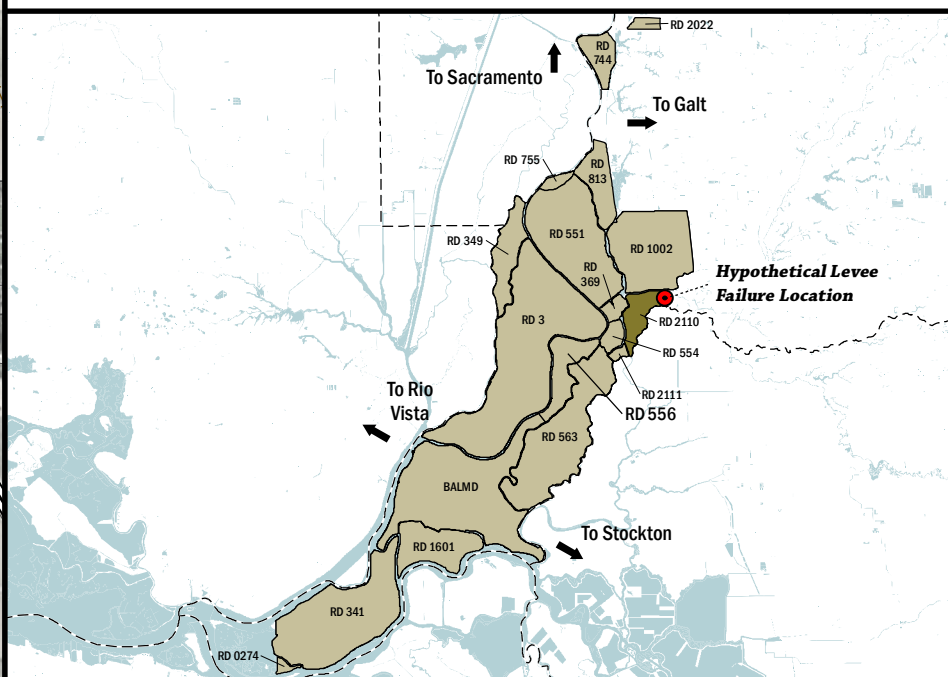
**TIME TO 1<sup>FT</sup> INUNDATION**

0 hrs
1 hr
2 hrs
3 hrs
4 hrs
5 hrs
6 hrs
7 hrs
8 hrs
9 hrs
10 hrs
15 hrs
20 hrs
25 hrs

----- DAY 1

**NOTES**

- The hypothetical levee failure is arbitrary. The time to 1 foot inundation results are approximate. Similar results would occur from a failure anywhere along the Mokelumne River levee.
- Elevations are provided in NAVD88 datum.
- Approximate breach opening width was based on the difference from the maximum water surface elevation to the landside toe times 50.



Delta Flood Emergency Safety Plan  
Sacramento County, California



ESTIMATED TIME OF INUNDATION FOR A HYPOTHETICAL  
LEVEE FAILURE LOCATED AT MOKELUMNE RIVER

May 2017

Figure D1B