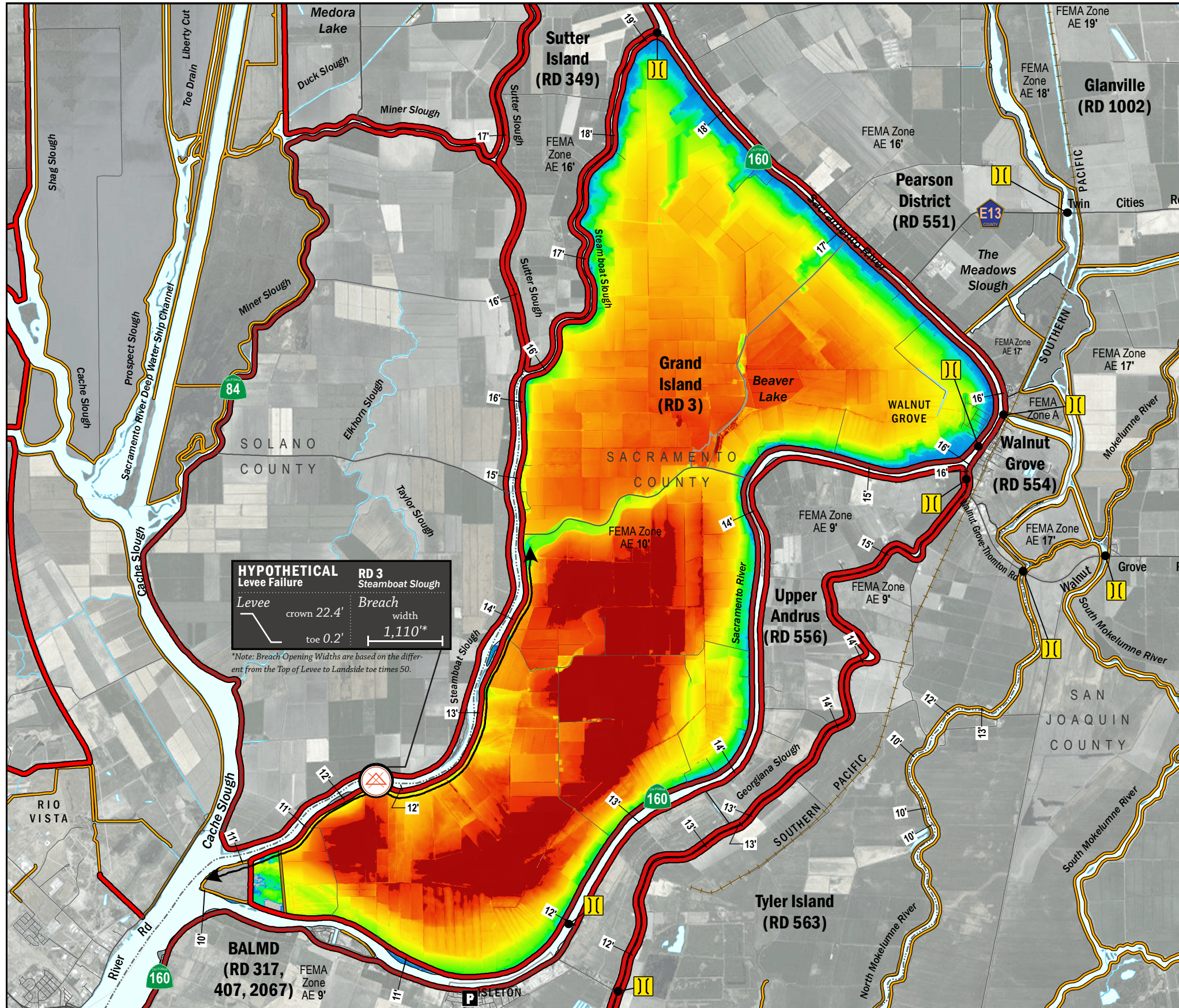


ESTIMATED FLOOD DEPTHS



HYPOTHETICAL Levee Failure

RD 3 Steamboat Slough	Levee	Breach
	width 22.4'	width 1,110'
	toe 0.2'	

**Note: Breach Opening Widths are based on the different from the Top of Levee to Landside toe times 50.*

LEGEND

ESTIMATED FLOOD DEPTH (feet)

LEVEES

- Project (Red line)
- Non-Project (Orange line)

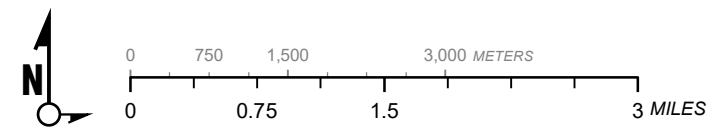
CRITICAL INFRASTRUCTURE

- Bridge Over Waterway (Yellow double line)
- Fire Station (F icon)
- Police Station (P icon)
- School (S icon)

Hypothetical Levee Failure Location
Arrows Indicate Breach Extents

Effective FEMA Base Flood Elevation (feet)
(Date 2/16/2012)

- NOTES**
1. The hypothetical levee failure location is arbitrary. Similar results would occur from a Steamboat Slough levee failure within the limits shown on the map. The depth of flooding after failure will vary based on tidal conditions and conditions (flow and volume) from the Sacramento River.
 2. Maximum water surface elevation will vary between elevation 8.0'-13.0' (NAVD88).
 3. The time to maximum depth after levee failure is approximately 4 days.
 4. Elevations are provided in NAVD88 datum.
 5. FEMA Zone AE 10.0' (NAVD88) is the 1% annual chance base flood designation for RD 3 due to non-accredited levees.
 6. The levee failure opening width was an approximation based on the difference between the maximum water surface elevation and the landside toe times 50.



1" = 6000 ft
1:72,000

Delta Flood Emergency Safety Plan
Sacramento County, California

RD 3



ESTIMATED FLOOD DEPTHS FOR A HYPOTHETICAL
LEVEE FAILURE LOCATED AT STEAMBOAT SLOUGH FOR RD 3

May 2017

Figure D2A