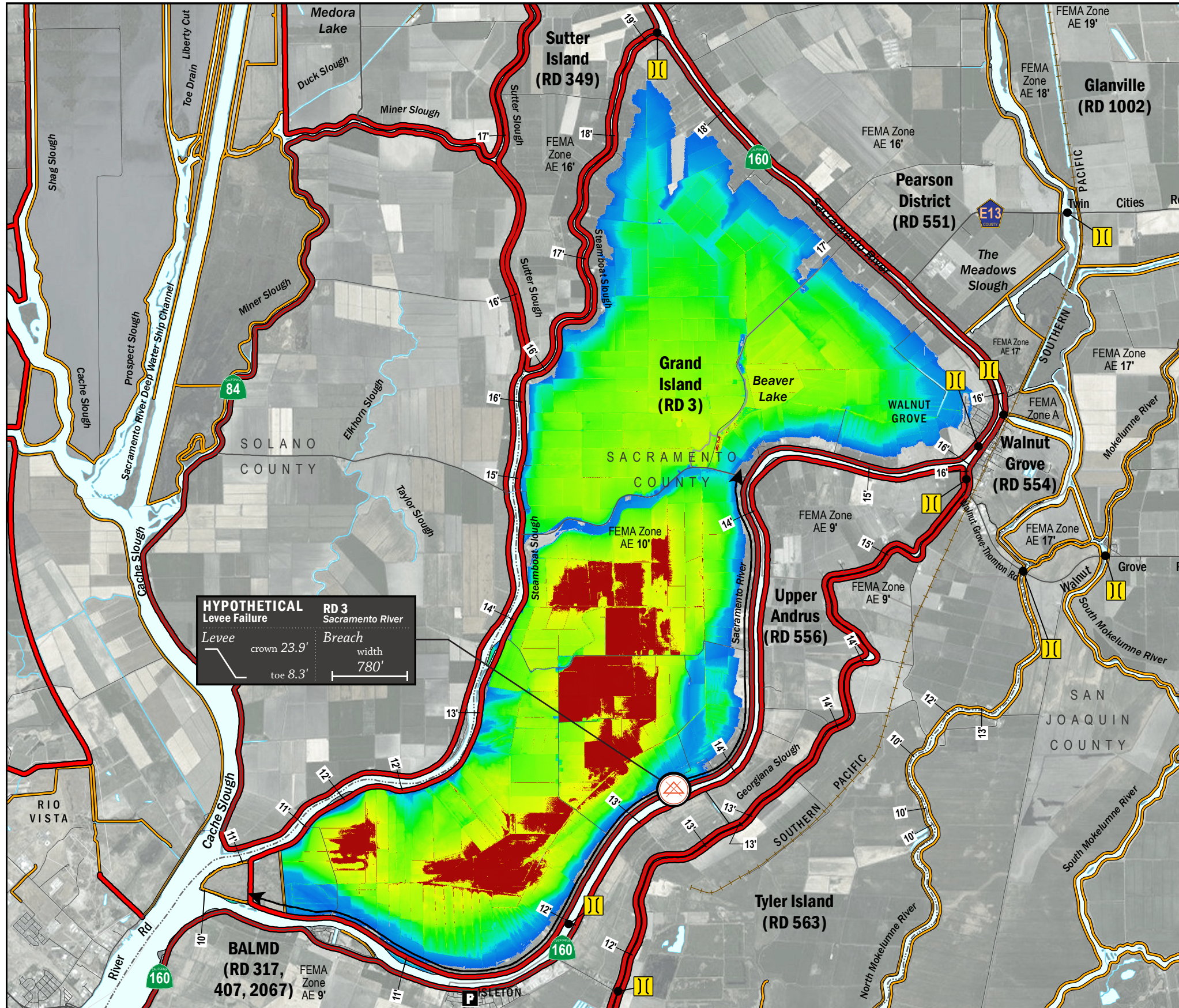


# ESTIMATED FLOOD DEPTHS



**HYPOTHETICAL Levee Failure**  
 Levee crown 23.9'  
 toe 8.3'  
 RD 3 Sacramento River  
 Breach width 780'

## LEGEND

**ESTIMATED FLOOD DEPTH (feet)**

**LEVEES**

- Project (Red line)
- Non-Project (Orange line)

**CRITICAL INFRASTRUCTURE**

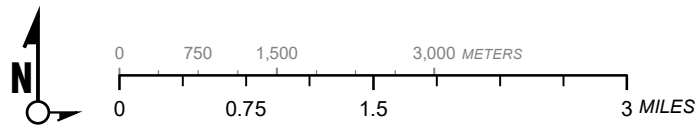
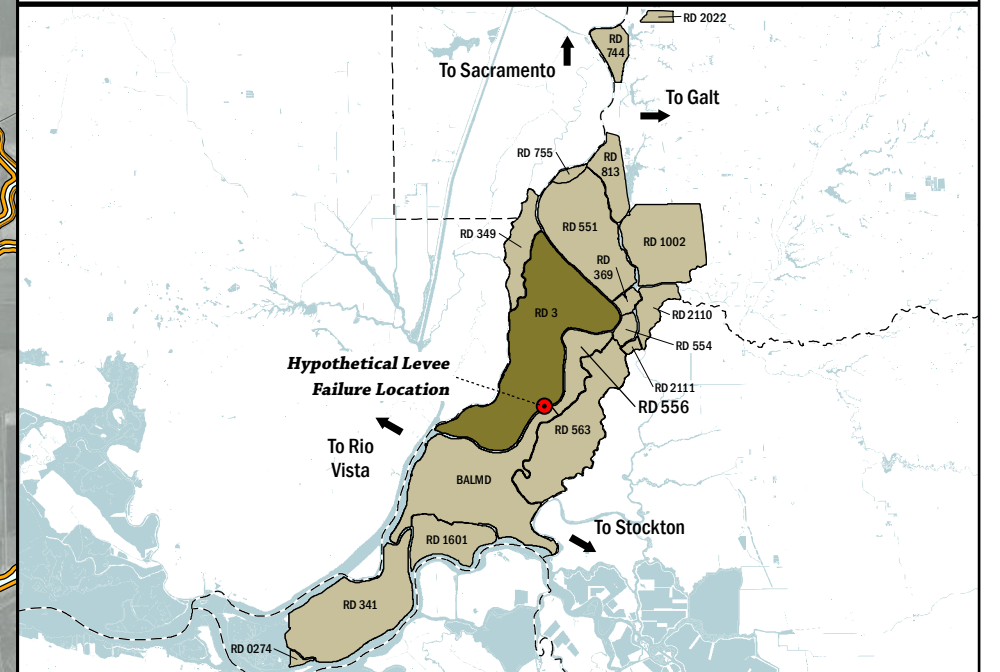
- Bridge Over Waterway (Yellow double line)
- Fire Station (F icon)
- Police Station (P icon)
- School (S icon)

**Hypothetical Levee Failure Location**  
 Arrows Indicate Breach Extents

18' Effective FEMA Base Flood Elevation (feet) (Date 2/16/2012)

**NOTES**

- The hypothetical levee failure location is arbitrary. Similar results would occur from a Sacramento River levee failure within the limits shown on the map. The depth of flooding after failure will vary based on operations (flow and volume) of the Sacramento River.
- Maximum water surface elevation will vary between elevation 10.0'-12.0' (NAVD88)
- The time to maximum depth after levee failure is approximately 4days.
- Elevations are provided in NAVD88 datum.
- FEMA Zone AE Elevation 10.0' (NAVD88) is the 1% annual chance base flood designation for RD 3 due to non-accredited levees.
- The levee failure opening width was an approximation based on the difference between the maximum water surface elevation and the landside toe times 50.



1" = 6000 ft  
 1:72,000

Delta Flood Emergency Safety Plan  
 Sacramento County, California

RD 3



ESTIMATED FLOOD DEPTHS FOR A HYPOTHETICAL  
 LEVEE FAILURE LOCATED AT SACRAMENTO RIVER

May 2017

Figure D3A