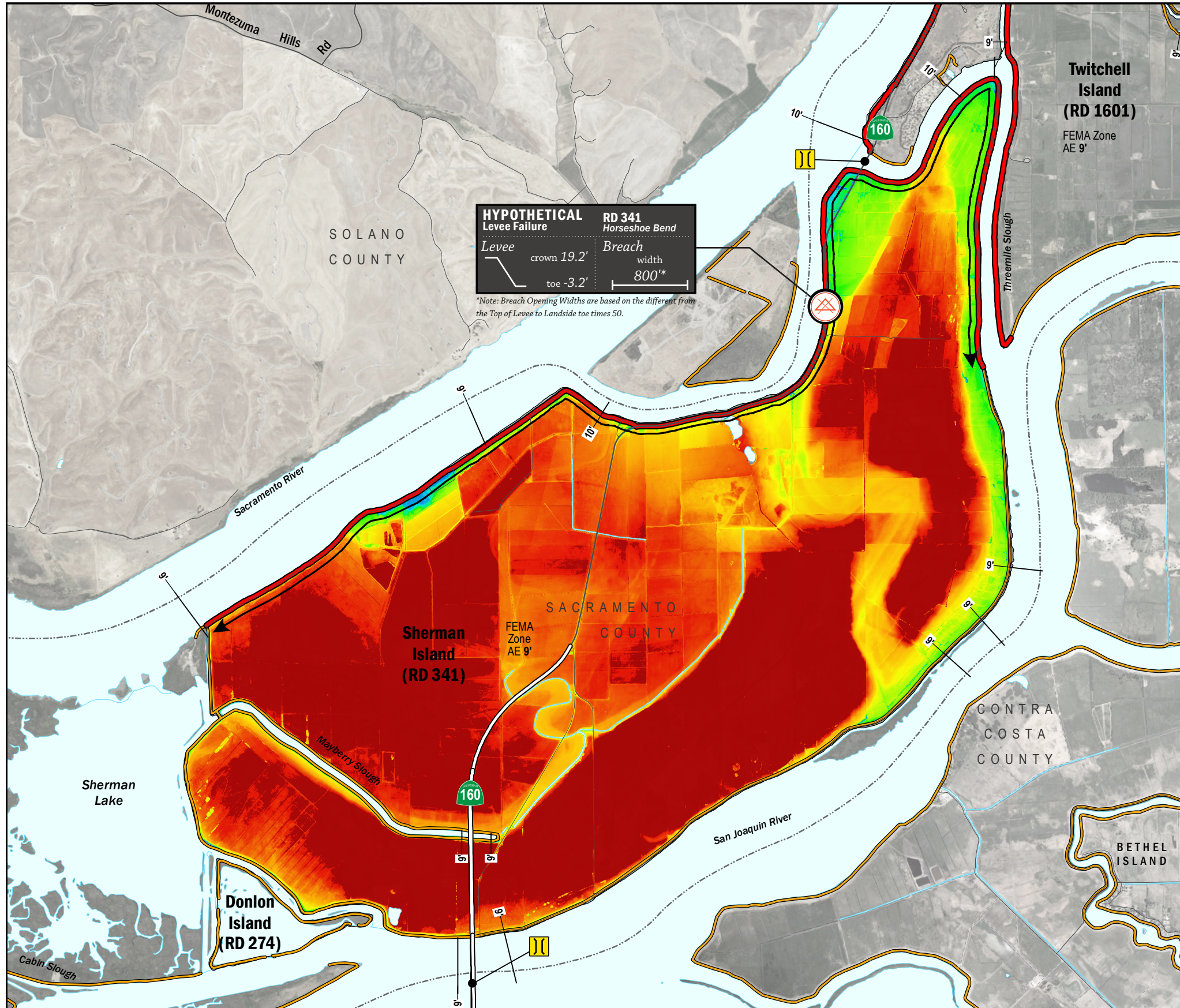


ESTIMATED FLOOD DEPTHS



HYPOTHETICAL Levee Failure

RD 341 Horseshoe Bend

Levee crown 19.2'
toe -3.2'

Breach width 800*

*Note: Breach Opening Widths are based on the difference from the Top of Levee to Landside toe times 50.

LEGEND

ESTIMATED FLOOD DEPTH (feet)

LEVEES

- Project (Red line)
- Non-Project (Orange line)

CRITICAL INFRASTRUCTURE

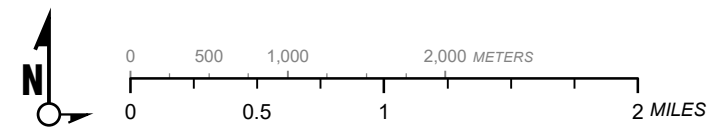
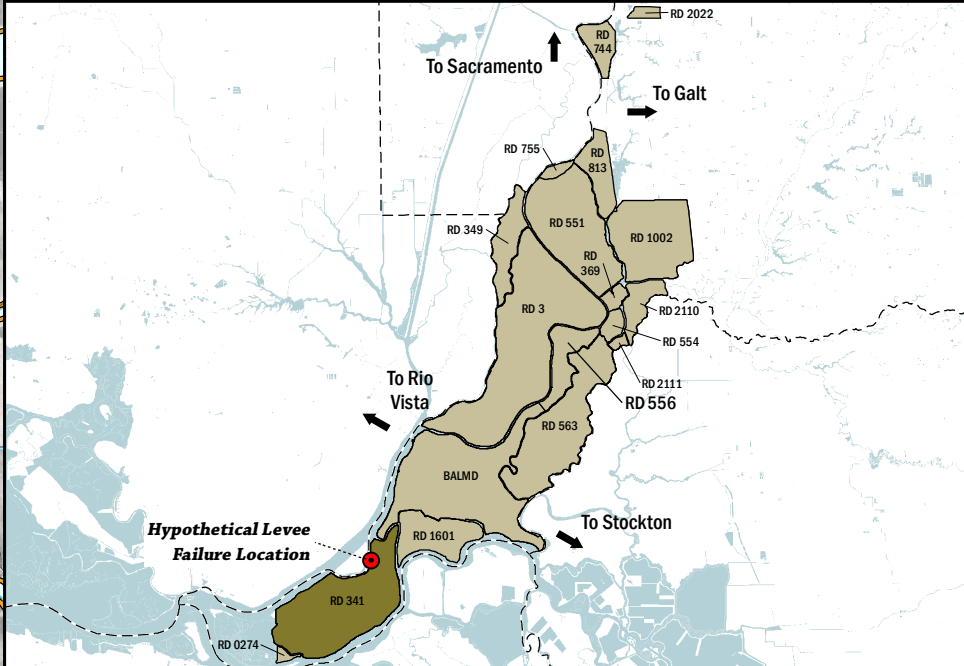
- Bridge Over Waterway (Yellow rectangle)
- Fire Station (F in square)
- Police Station (P in square)
- School (S in square)

Hypothetical Levee Failure Location
Arrows Indicate Breach Extents

Effective FEMA Base Flood Elevation (feet)
(Date 2/16/2012)

NOTES

1. The hypothetical levee failure location is arbitrary. Similar results would occur from a levee failure along the Sacramento River, Horseshoe Bend or Threemile Slough levee within the limits shown on the map. The depth of flooding will vary based on tidal elevation conditions.
2. Estimated flood depths will vary based on tidal conditions. Maximum water surface elevation will vary between elevation 7.0'-10.0' (NAVD88)
3. The time to maximum depth after levee failure is approximately 5 days.
4. Elevations are provided in NAVD88 datum.
5. FEMA Zone AE Elevation 9.0' (NAVD88) is the 1% annual chance base flood designation for RD 341 due to non-accredited levees.
6. The levee failure opening width was an approximation based on the difference between the maximum water surface elevation and the landside toe times 50.



Delta Flood Emergency Safety Plan
Sacramento County, California



RD 341

ESTIMATED FLOOD DEPTHS FOR A HYPOTHETICAL LEVEE FAILURE LOCATED AT HORSESHOE BEND

May 2017

Figure D1A