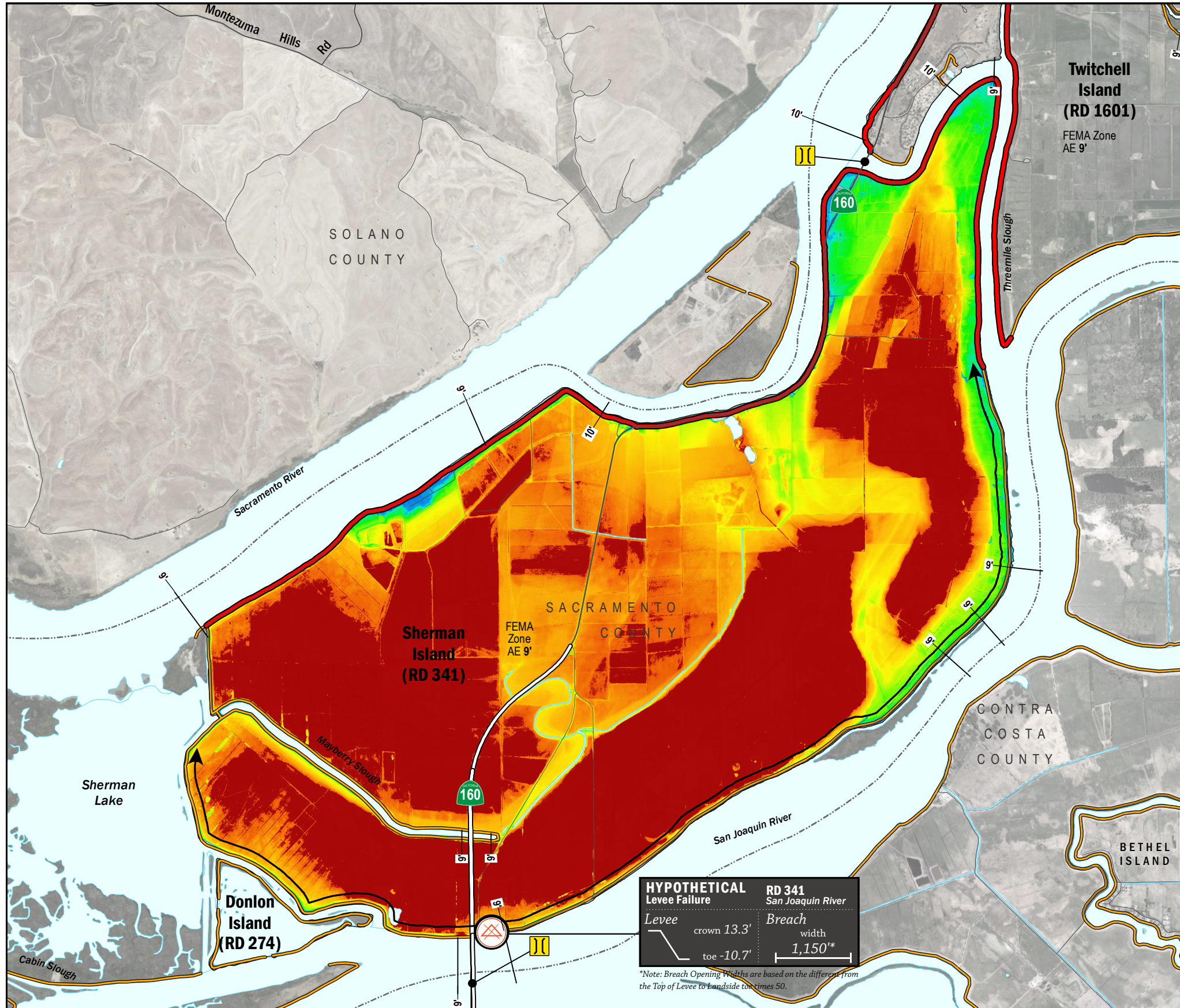


ESTIMATED FLOOD DEPTHS



LEGEND

ESTIMATED FLOOD DEPTH (feet)

Hypothetical Levee Failure Location
Arrows Indicate Breach Extents

18' — Effective FEMA Base Flood Elevation (feet)
(Date 2/16/2012)

LEVELS

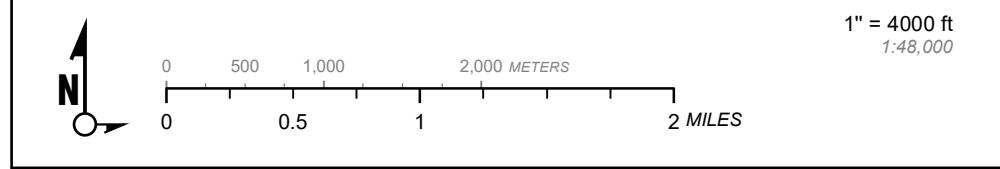
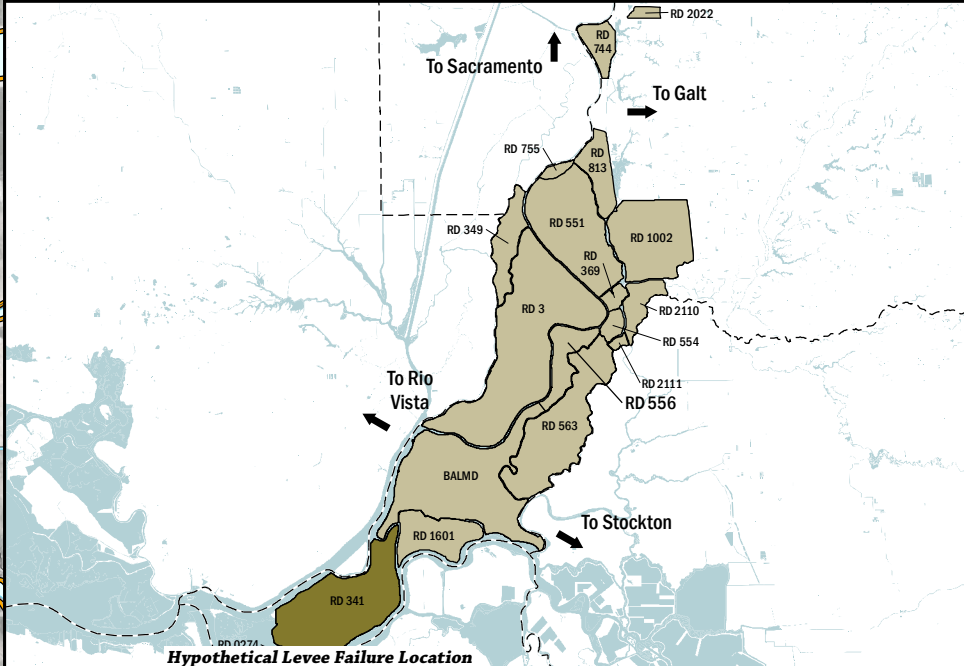
- Project
- Non-Project

CRITICAL INFRASTRUCTURE

- Bridge Over Waterway
- Fire Station
- Police Station
- School

NOTES

1. The hypothetical levee failure location is arbitrary. The flood depth results are approximate. Similar results would occur from a failure anywhere along the San Joaquin River levee.
2. Estimated flood depths will vary based on tidal conditions. Maximum water surface elevation will vary between elevation 7.0'-10.0' (NAVD88)
3. The time to maximum depth after levee failure is approximately 5 days.
4. Elevations are provided in NAVD88 datum.
5. FEMA Zone AE Elevation 9.0' (NAVD88) is the 1% annual chance base flood designation for RD 341 due to non-accredited levees.
6. The levee failure opening width was an approximation based on the difference between the maximum water surface elevation and the landside toe times 50.



Delta Flood Emergency Safety Plan
Sacramento County, California

RD 341



ESTIMATED FLOOD DEPTHS FOR A HYPOTHETICAL LEVEE FAILURE LOCATED AT SAN JOAQUIN RIVER

May 2017

Figure D2A