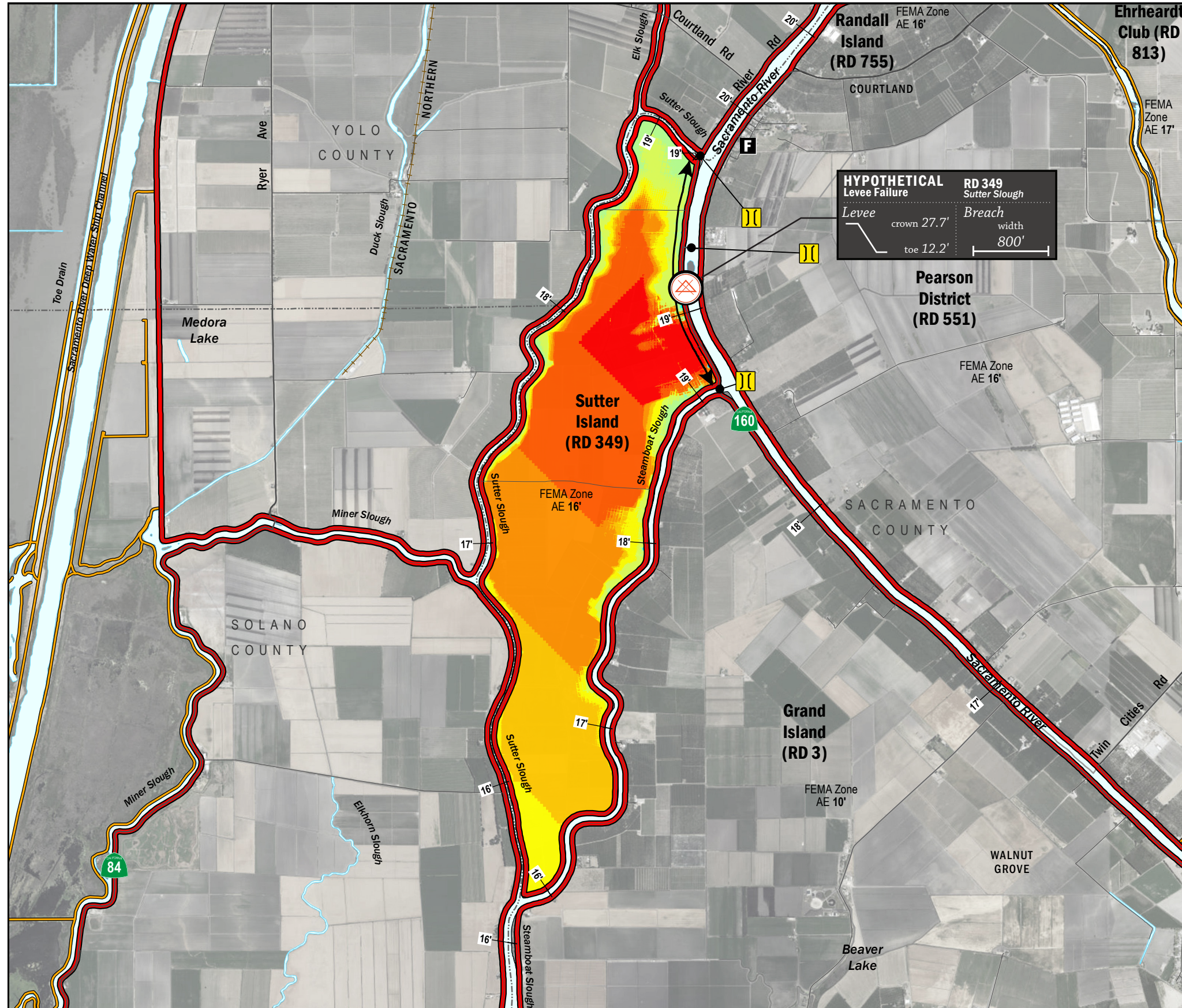


TIME OF INUNDATION



LEGEND

TIME TO 1^{FT} INUNDATION

0 hrs
2 hr
4 hrs
6 hrs
8 hrs
10 hrs
12 hrs
14 hrs
16 hrs
18 hrs
20 hrs
22 hrs
24 hrs
48 hrs

----- DAY 1
----- DAY 2

LEVEES

- Project
- Non-Project

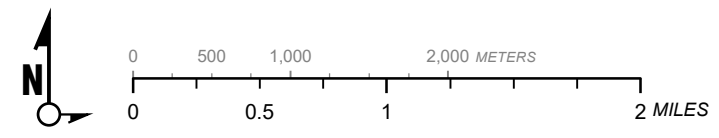
CRITICAL INFRASTRUCTURE

- Bridge Over Waterway
- Fire Station
- Police Station
- School

HYPOTHETICAL Levee Failure Location
Arrows Indicate Breach Extents

18' Effective FEMA Base Flood Elevation (feet)
(Date 2/16/2012)

- NOTES**
- The hypothetical levee failure is arbitrary. The time to one-foot of inundation is approximate. Similar results would occur within the vicinity of the levee failure shown on the map.
 - Elevations are provided in NAVD88 datum.
 - The levee failure opening width was an approximation based on the difference between the maximum water surface elevation and the landside toe times 50.



1" = 4000 ft
1:48,000

Delta Flood Emergency Safety Plan
Sacramento County, California

RD 349



ESTIMATED TIME OF INUNDATION FOR A HYPOTHETICAL
LEVEE FAILURE LOCATED AT SACRAMENTO RIVER

May 2017

Figure D1B