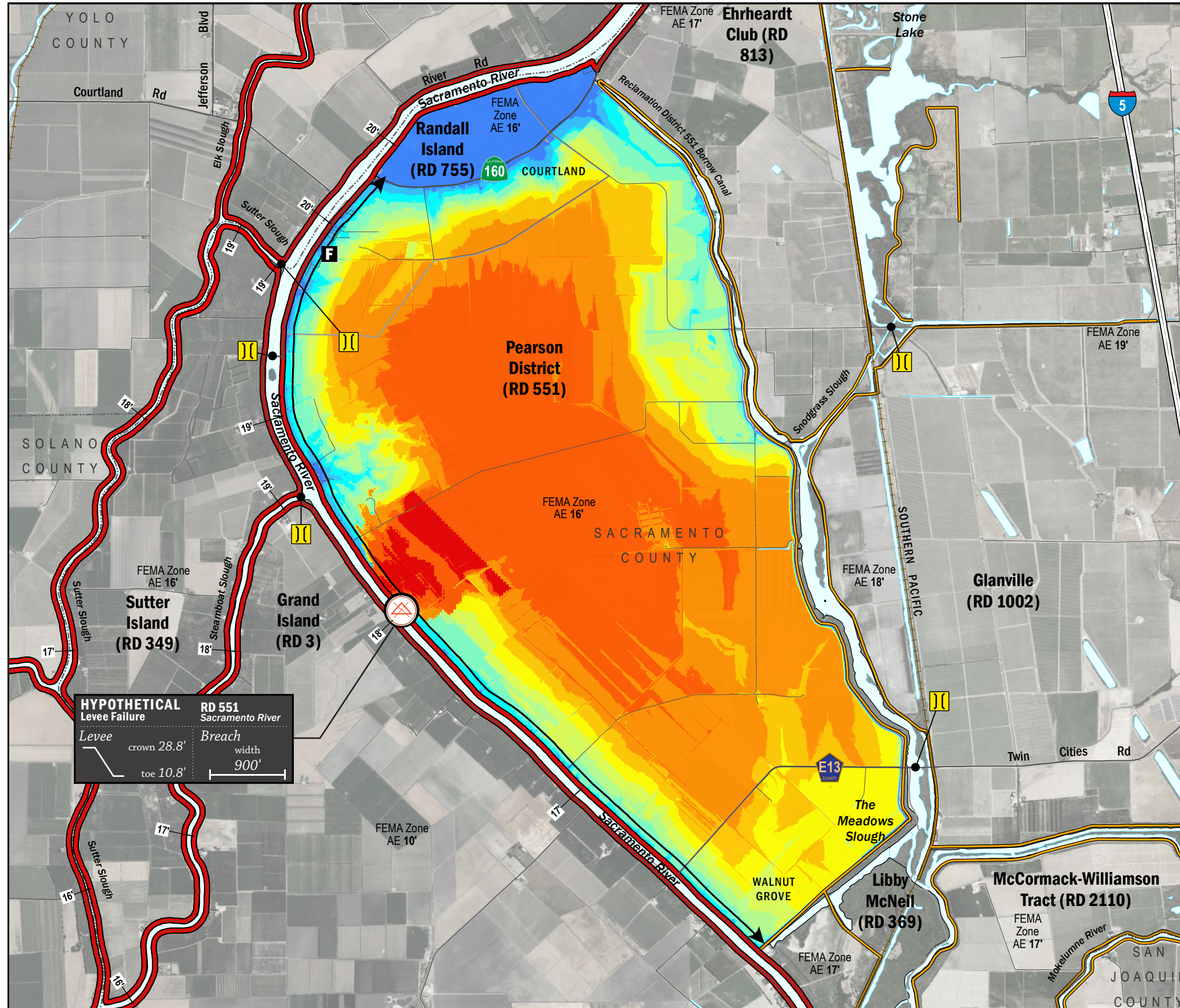


TIME OF INUNDATION



HYPOTHETICAL Levee Failure
RD 551 Sacramento River
 Levee crown 28.8' toe 10.8'
 Breach width 900'

LEGEND

TIME TO 1^{FT} INUNDATION

0 hrs
2 hr
8 hrs
16 hrs
24 hrs
32 hrs
40 hrs
48 hrs
56 hrs
64 hrs
72 hrs
100 hrs
150 hrs
200 hrs

LEVEES

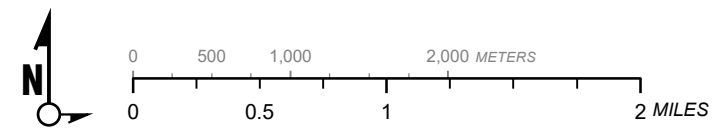
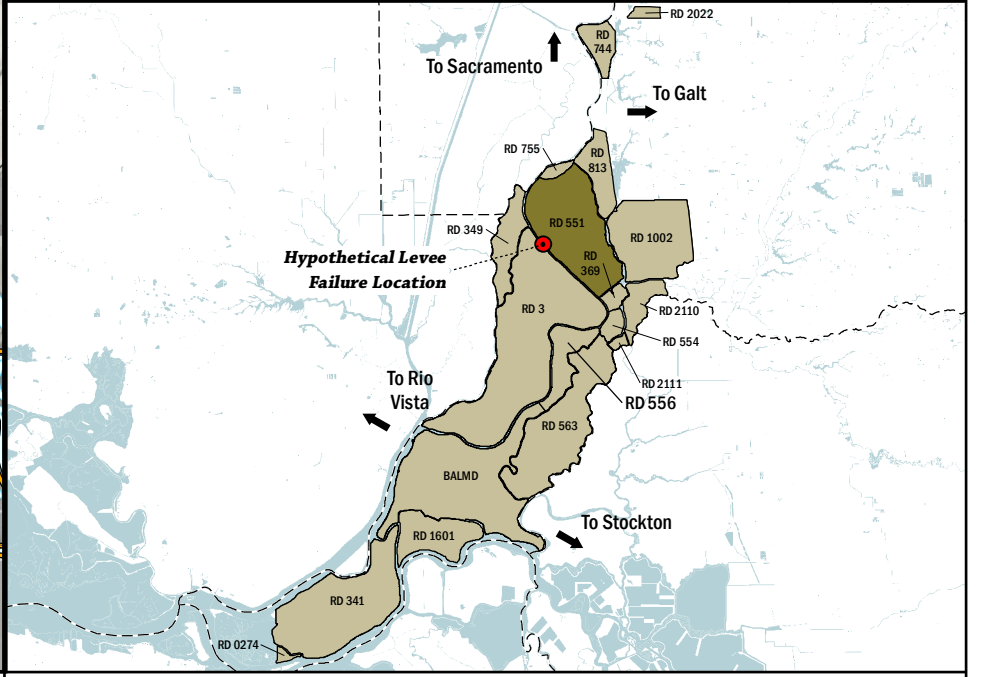
- Project (Red line)
- Non-Project (Orange line)

CRITICAL INFRASTRUCTURE

- Bridge Over Waterway (Yellow rectangle)
- Fire Station (F in square)
- Police Station (P in square)
- School (S in square)

NOTES

- The hypothetical levee failure is arbitrary. The time to one-foot of inundation is approximate. Similar results would occur within the vicinity of the levee failure shown on the map.
- Elevations are provided in NAVD88 datum.
- The levee failure opening width was an approximation based on the difference between the maximum water surface elevation and the landside toe times 50.



1" = 4000 ft
1:48,000

Delta Flood Emergency Safety Plan
Sacramento County, California

RD 551



ESTIMATED TIME OF INUNDATION FOR A HYPOTHETICAL LEVEE FAILURE LOCATED AT SACRAMENTO RIVER

May 2017

Figure D2B