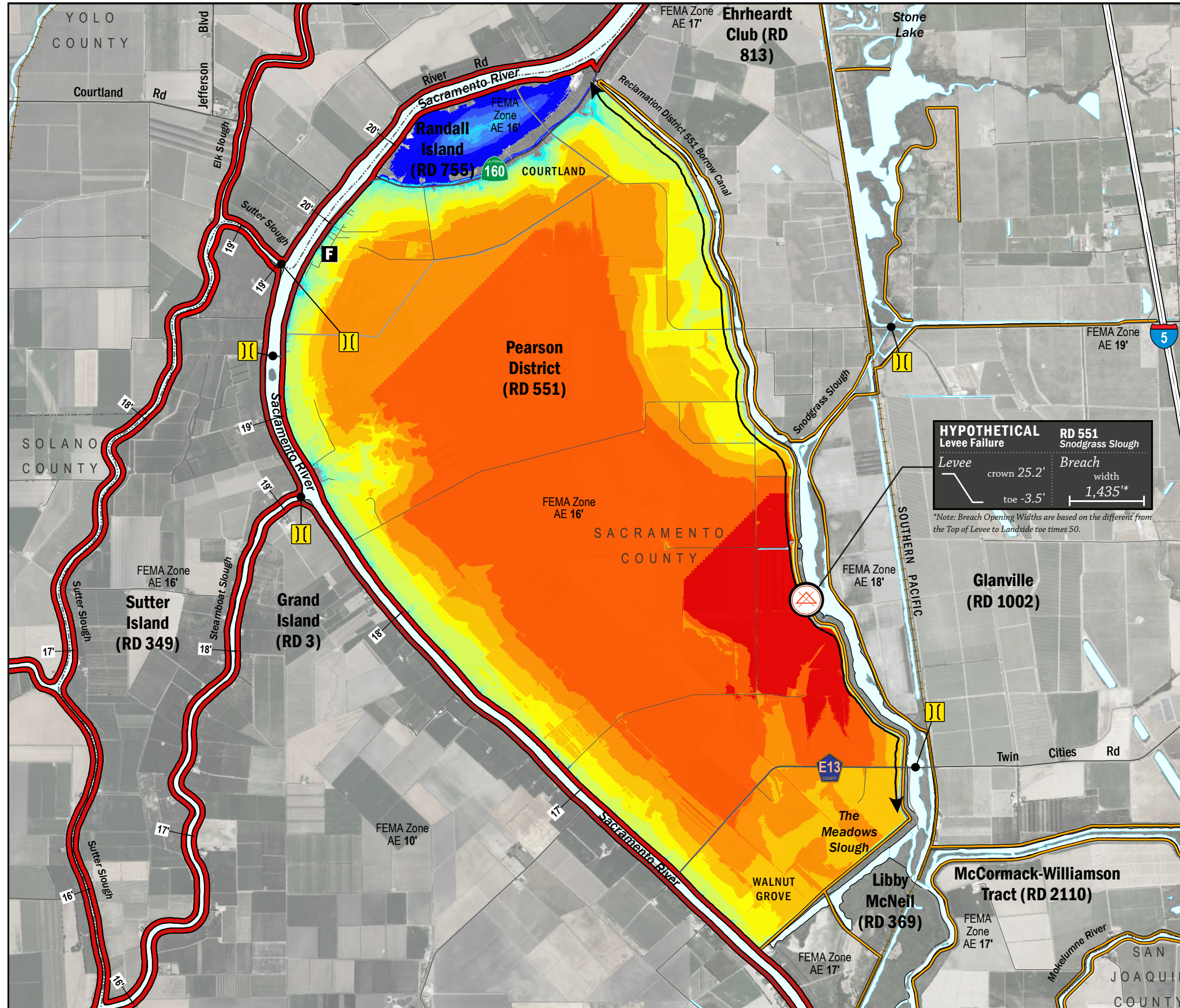


TIME OF INUNDATION



HYPOTHETICAL Levee Failure
RD 551 Snodgrass Slough

Levee crown 25.2' toe -3.5'

Breach width 1,435'*

*Note: Breach Opening Widths are based on the difference from the Top of Levee to Landside toe times 50.

LEGEND

TIME TO 1^{FT} INUNDATION

0 hrs
2 hr
8 hrs
16 hrs
24 hrs
32 hrs
40 hrs
48 hrs
56 hrs
64 hrs
72 hrs
100 hrs
150 hrs
200 hrs

LEVEES

- Project (Red line)
- Non-Project (Orange line)

CRITICAL INFRASTRUCTURE

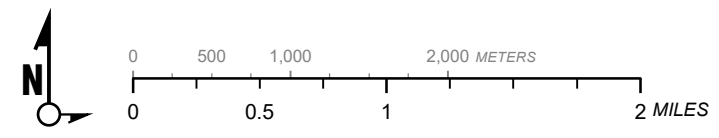
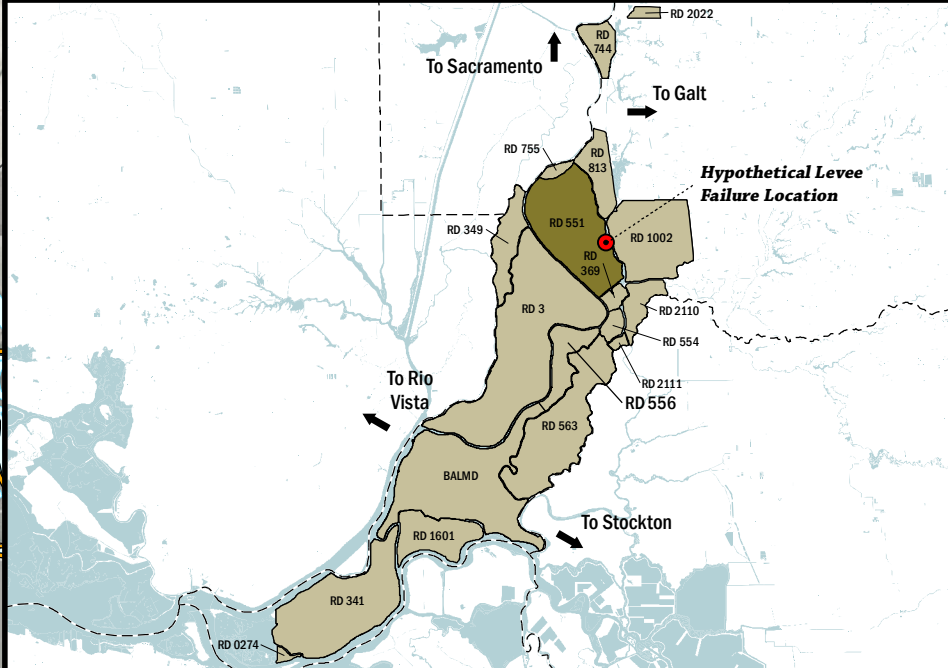
- Bridge Over Waterway (Yellow double line)
- Fire Station (F icon)
- Police Station (P icon)
- School (S icon)

Hypothetical Levee Failure Location
 Arrows Indicate Breach Extents

18' Effective FEMA Base Flood Elevation (feet) (Date 2/16/2012)

NOTES

- The hypothetical levee failure is arbitrary. The time to 1 foot inundation results are approximate. Similar results would occur from a failure anywhere along the Snodgrass Slough levee.
- Elevations are provided in NAVD88 datum.
- Approximate breach opening width was based on the difference from the maximum water surface elevation to the landside toe times 50.



Delta Flood Emergency Safety Plan
 Sacramento County, California



ESTIMATED TIME OF INUNDATION FOR A HYPOTHETICAL
 LEVEE FAILURE LOCATED AT SNODGRASS SLOUGH

May 2017

Figure D3B