

LEGEND

Hypothetical Levee Failure

TRANSPORTATION

EVACUATION ROUTES

Interstate
 Highway
 Highway On Levee
 Levee Road
 Local Road

Interstate
 Highway
 Major Road
 Local Road

Interstate Shield Label
 State Highway Shield Label
 County Highway Shield Label

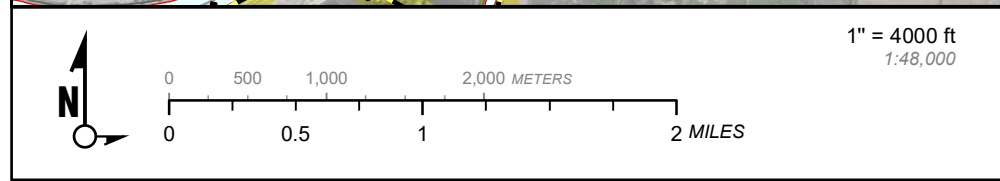
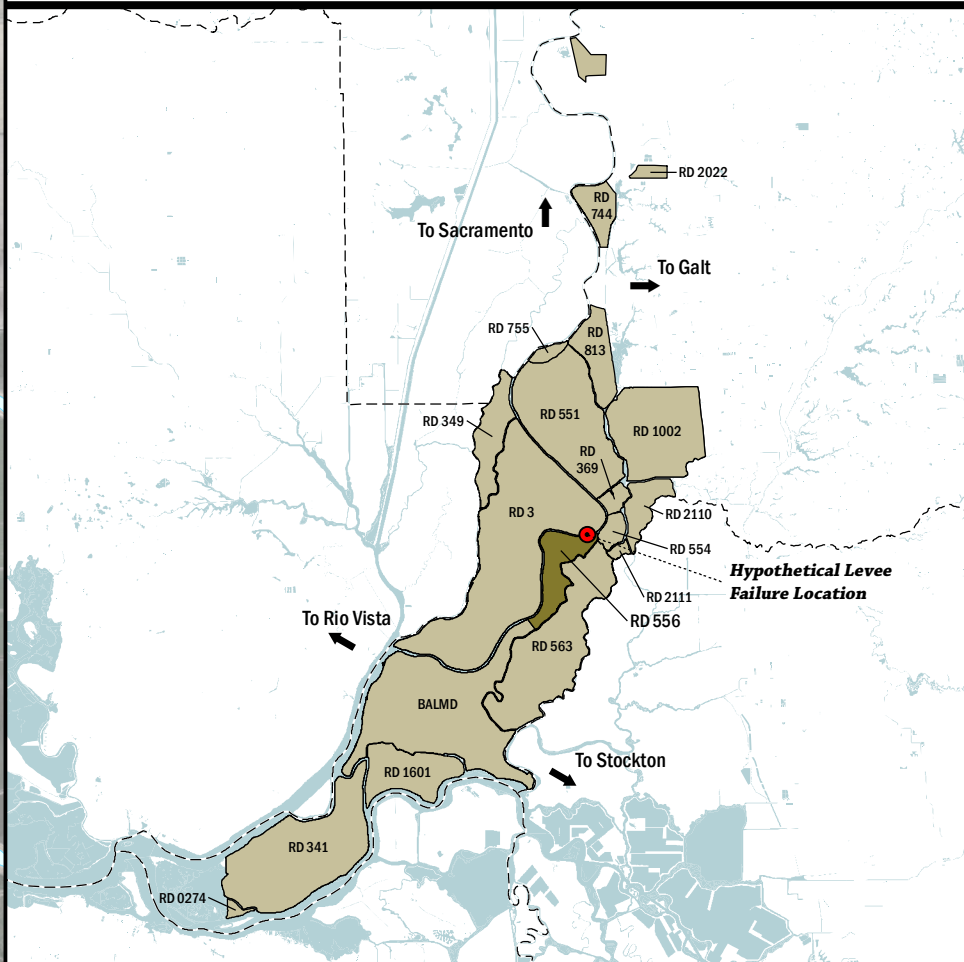
INFRASTRUCTURE

Bridge Over Waterway
 Ferry

JURISDICTIONS

City Boundary
 County Boundary
 RD Boundary

Fire Station
 Hospital
 Police Station
 School



Delta Flood Emergency Safety Plan
Sacramento County, California

BALMD



EVACUATION ROUTES FOR BALMD
HYPOTHETICAL LEVEE FAILURE AT SACRAMENTO RIVER

May 2017 Figure D1C