



Note: Possible inundation of HWY 12 from levee failure.

### LEGEND

Hypothetical Levee Failure

#### TRANSPORTATION

**EVACUATION ROUTES**

Interstate | 
 Highway | 
 Highway On Levee | 
 Levee Road | 
 Local Road

Interstate | 
 Highway | 
 Major Road | 
 Local Road

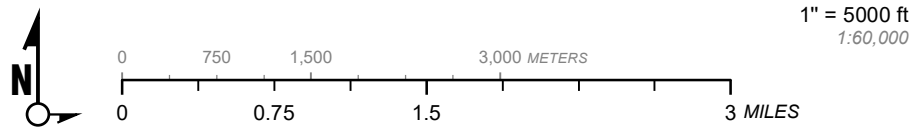
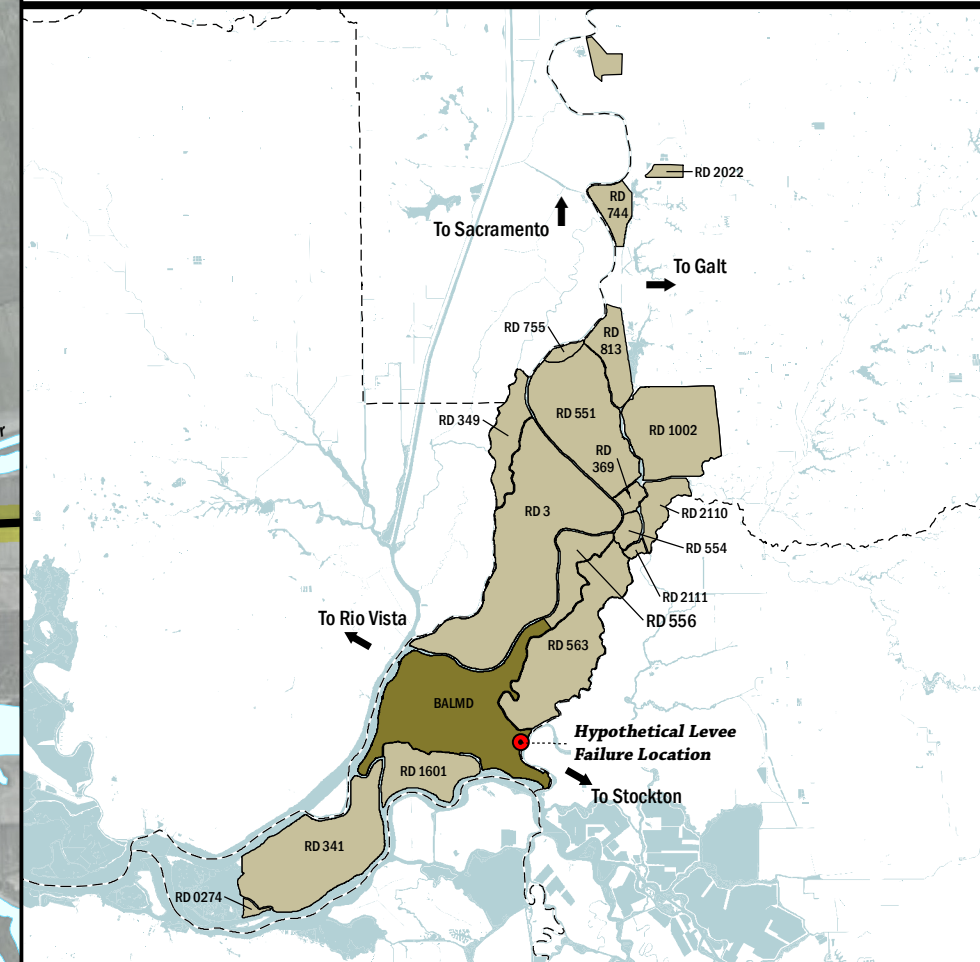
Interstate Shield Label | 
 State Highway Shield Label | 
 County Highway Shield Label

#### INFRASTRUCTURE

Bridge Over Waterway | 
 Fire Station | 
 Hospital | 
 Police Station | 
 School

#### JURISDICTIONS

City Boundary | 
 County Boundary | 
 RD Boundary



1" = 5000 ft  
1:60,000

Delta Flood Emergency Safety Plan  
Sacramento County, California

BALMD



EVACUATION ROUTES FOR BALMD  
HYPOTHETICAL LEVEE FAILURE AT MOKELUMNE RIVER

May 2017 Figure D2C