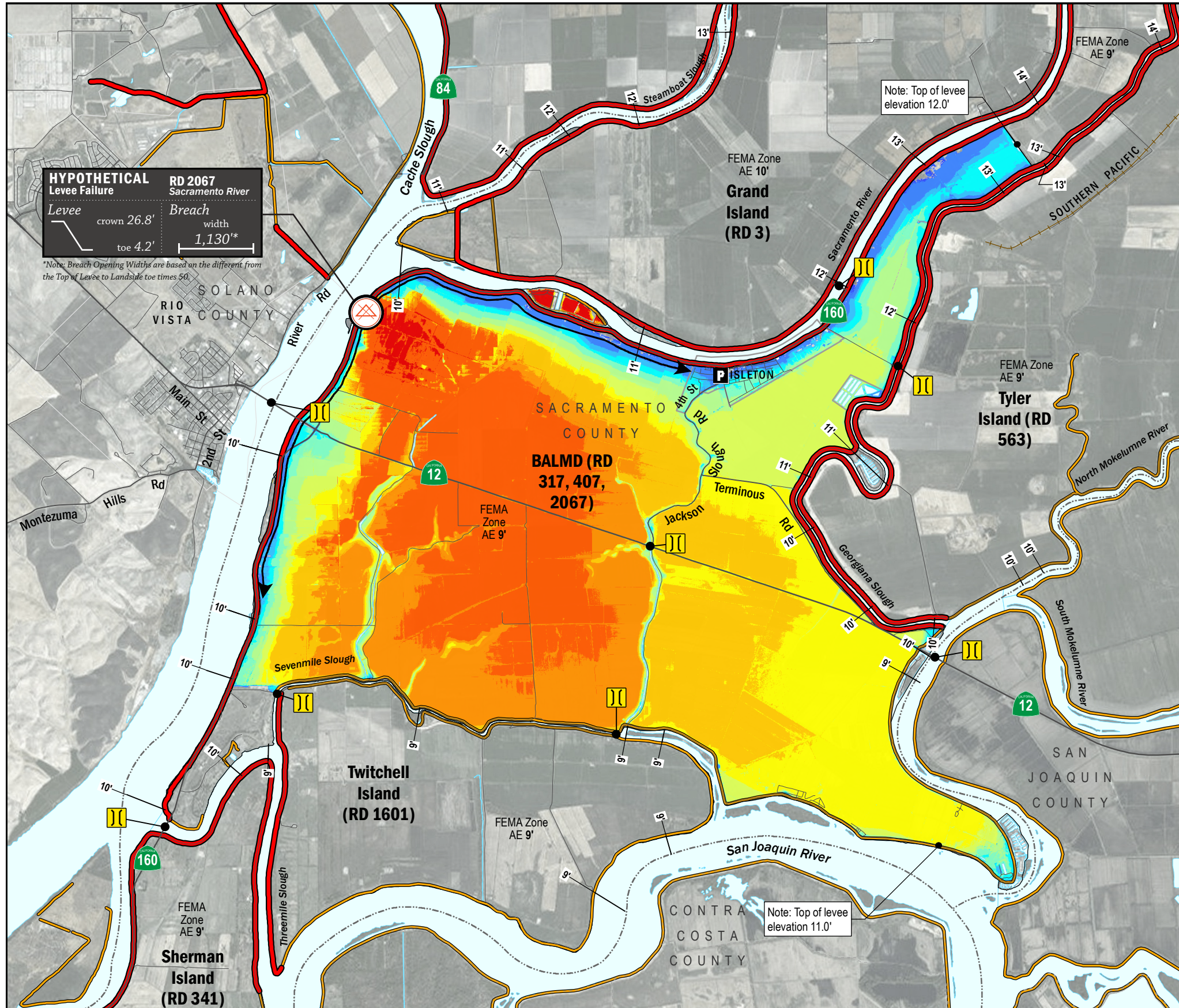


# TIME OF INUNDATION



**HYPOTHETICAL Levee Failure**  
 Levee crown 26.8'  
 toe 4.2'  
 Breach width 1,130\*  
\*Note: Breach Opening Widths are based on the difference from the Top of Levee to Landside toe times 50.

Note: Top of levee elevation 12.0'

Note: Top of levee elevation 11.0'

## LEGEND

**TIME TO 1<sup>FT</sup> INUNDATION**

0 hrs
2 hr
8 hrs
16 hrs
24 hrs
32 hrs
40 hrs
48 hrs
56 hrs
64 hrs
72 hrs
100 hrs
150 hrs
200 hrs

**LEVEES**

- Project (Red line)
- Non-Project (Orange line)

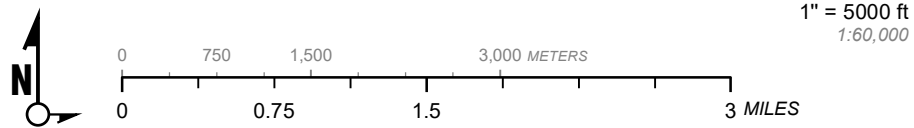
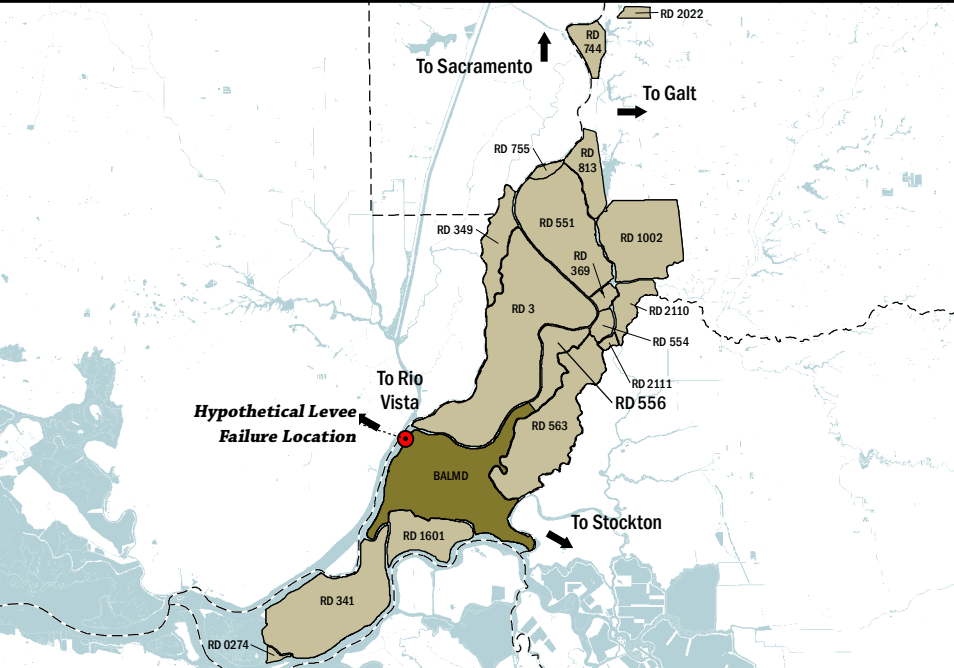
**CRITICAL INFRASTRUCTURE**

- Bridge (Yellow double line)
- Over Waterway (Blue double line)
- Fire Station (F icon)
- Police Station (P icon)
- School (S icon)

**Other Symbols:**

- Hypothetical Levee Failure Location (Red circle with X)
- Arrows Indicate Breach Extents
- Effective FEMA Base Flood Elevation (feet) (Date 2/16/2012) (18' line)

- NOTES**
- The hypothetical levee failure is arbitrary. The time to one-foot of inundation is approximate. Similar results would occur within the vicinity of the levee failure shown on the map.
  - Elevations are provided in NAVD88 datum.
  - The levee failure opening width was an approximation based on the difference between the maximum water surface elevation and the landside toe times 50.



1" = 5000 ft  
 1:60,000

Delta Flood Emergency Safety Plan  
 Sacramento County, California

BALMD



ESTIMATED TIME OF INUNDATION FOR A HYPOTHETICAL LEVEE FAILURE LOCATED AT SACRAMENTO RIVER

May 2017

Figure D1B