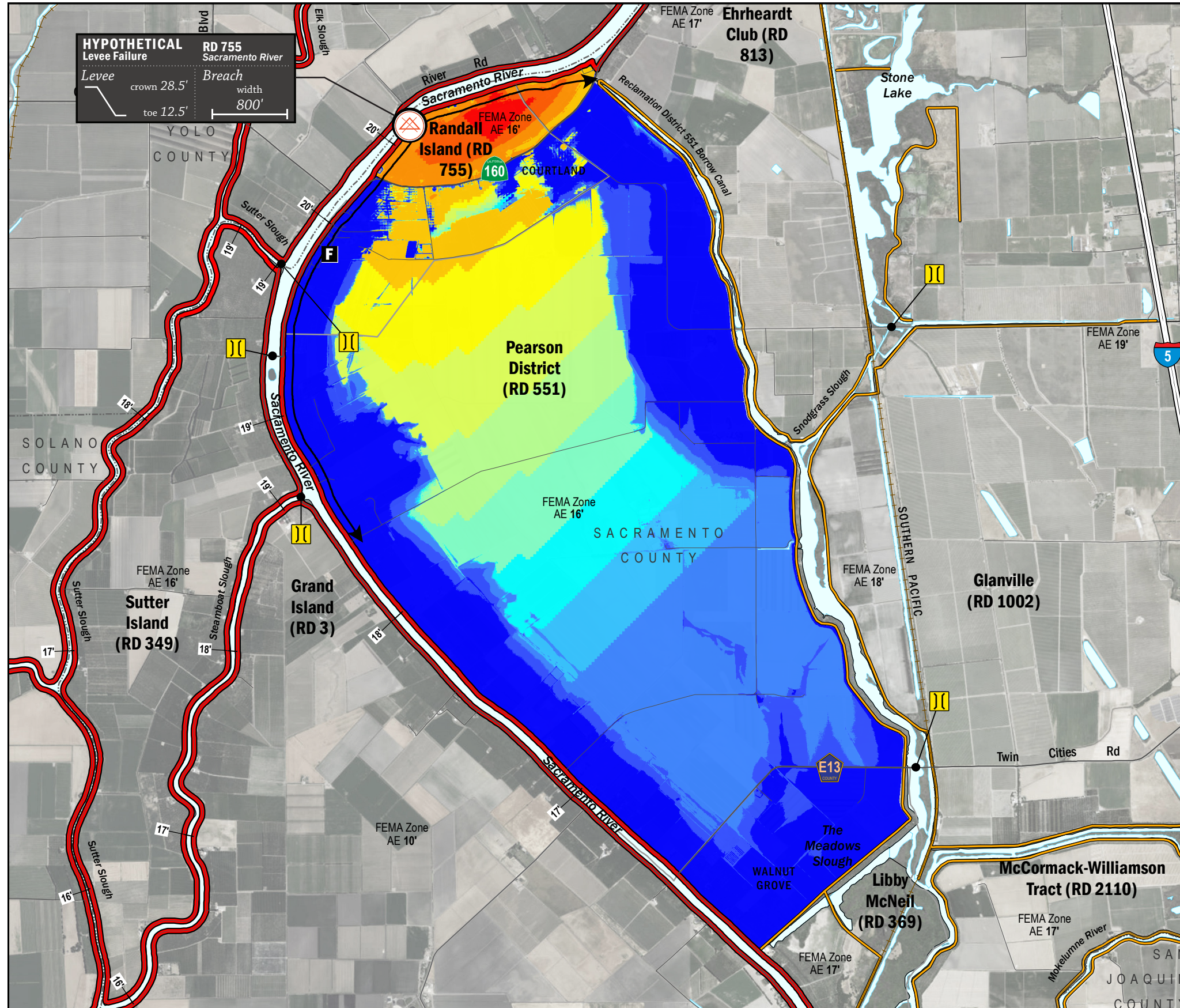


TIME OF INUNDATION



LEGEND

HYPOTHETICAL Levee Failure Location
 Arrows Indicate Breach Extents

18' Effective FEMA Base Flood Elevation (feet)
 (Date 2/16/2012)

LEVEES

- Project
- Non-Project

CRITICAL INFRASTRUCTURE

- Bridge Over Waterway
- Fire Station
- Police Station
- School

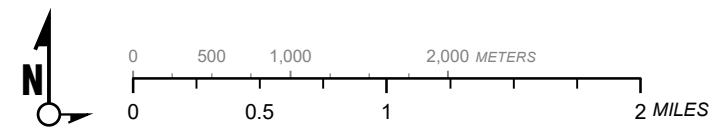
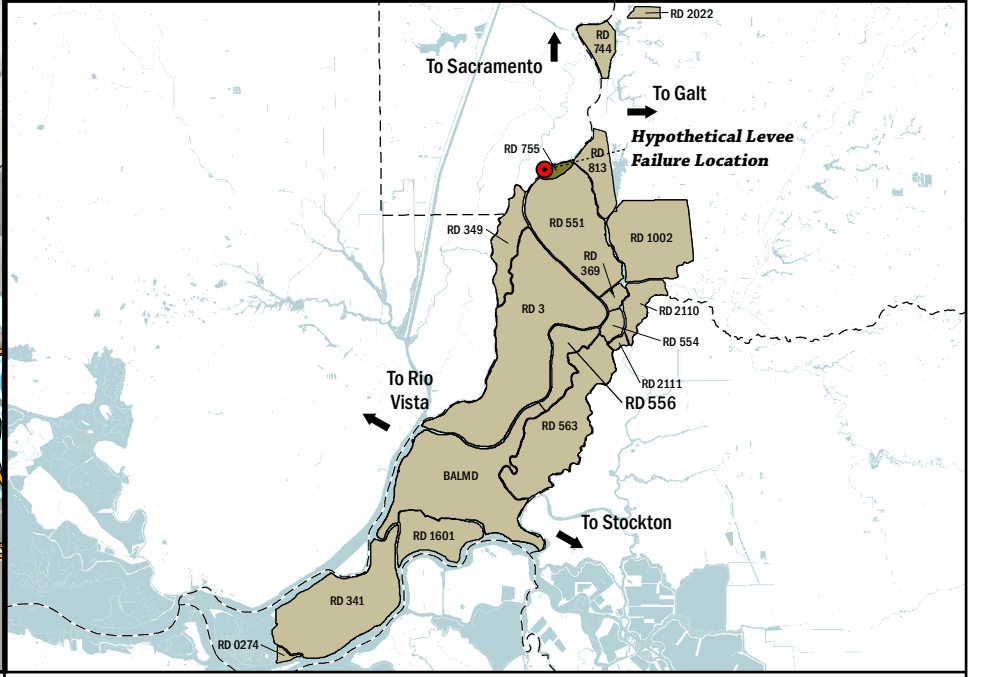
TIME TO 1^{FT} INUNDATION

- 0 hrs
- 1 hr
- 2 hrs
- 3 hrs
- 4 hrs
- 5 hrs
- 6 hrs
- 7 hrs
- 8 hrs
- 9 hrs
- 10 hrs
- 15 hrs
- 20 hrs
- 25 hrs

----- DAY 1

NOTES

- The hypothetical levee failure is arbitrary. The time to one-foot of inundation is approximate. Similar results would occur within the vicinity of the levee failure shown on the map.
- Elevations are provided in NAVD88 datum.
- The levee failure opening width was an approximation based on the difference between the maximum water surface elevation and the landside toe times 50.



1" = 4000 ft
 1:48,000

Delta Flood Emergency Safety Plan
 Sacramento County, California

RD 755



ESTIMATED TIME OF INUNDATION FOR A HYPOTHETICAL
 LEVEE FAILURE LOCATED AT SACRAMENTO RIVER

May 2017

Figure D1B