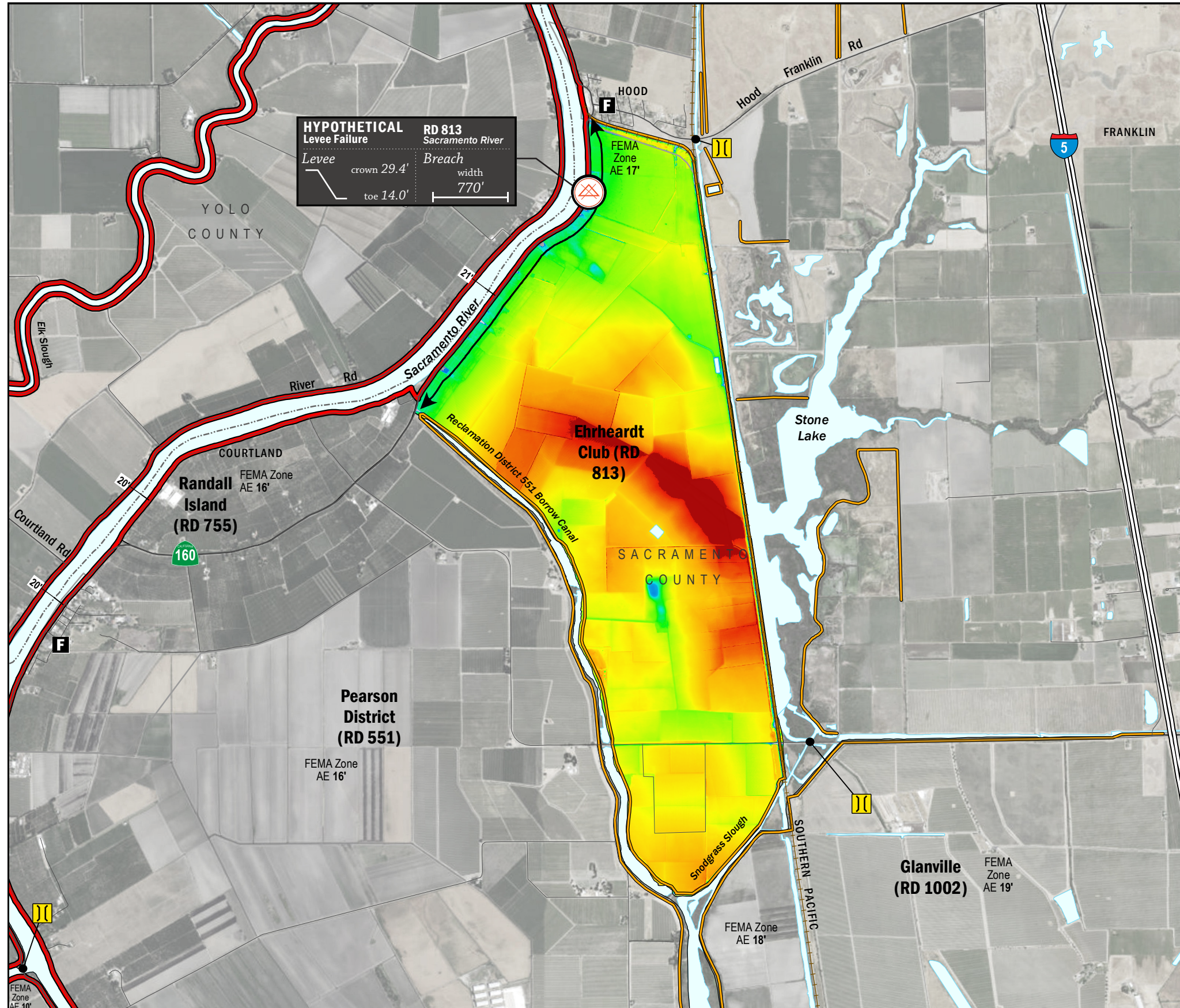


ESTIMATED FLOOD DEPTHS



HYPOTHETICAL Levee Failure

RD 813 Sacramento River
Levee crown 29.4'
toe 14.0'
Breach width 770'

LEGEND

ESTIMATED FLOOD DEPTH (feet)

HYPOTHETICAL Levee Failure Location
Arrows Indicate Breach Extents

18' Effective FEMA Base Flood Elevation (feet)
(Date 2/16/2012)

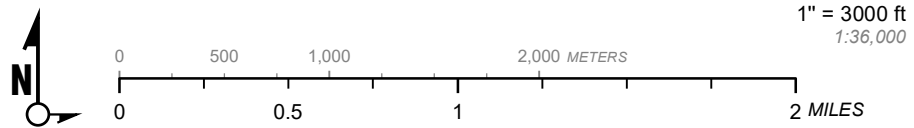
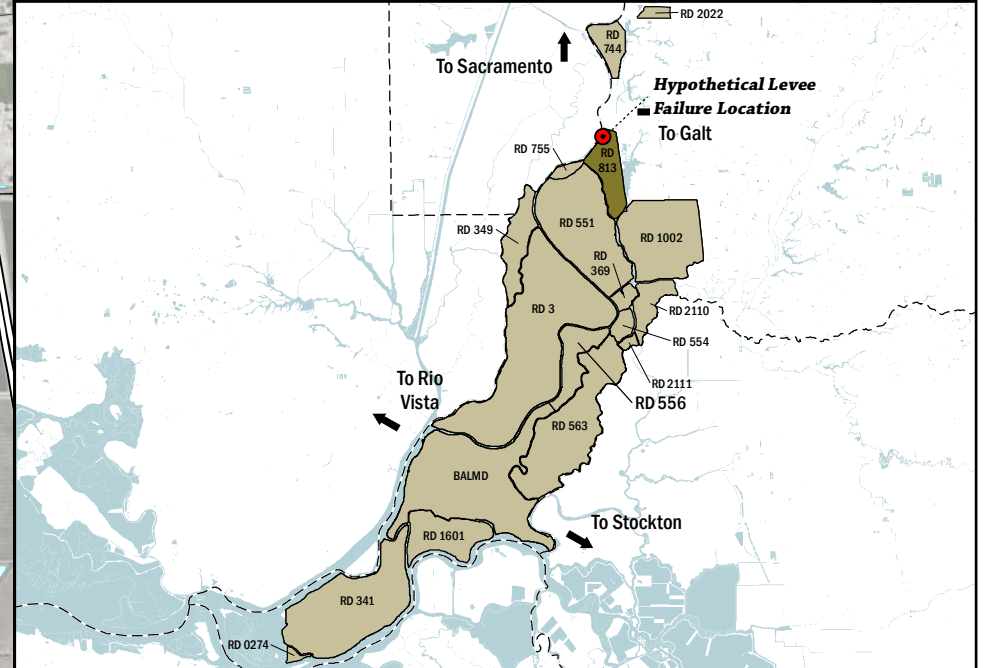
LEVELS

- Project
- Non-Project

CRITICAL INFRASTRUCTURE

- Bridge Over Waterway
- Fire Station
- Police Station
- School

- NOTES**
1. The hypothetical levee failure location is arbitrary. Similar results would occur from a Sacramento River levee failure within the limits shown on the map. The depth of flooding after failure will vary based on operations (flow and volume) of the Sacramento River.
 2. Maximum water surface elevation could reach between elevation 16.0'-20.0' (NAVD88)
 3. The time to maximum depth after levee failure is approximately 3 days.
 4. Elevations are provided in NAVD88 datum.
 5. FEMA Zone AE elevation 17.0' (NAVD88) is the 1% annual chance base flood designation for RD 813 due to non-accredited levees.
 6. The levee failure opening width was an approximation based on the difference between the maximum water surface elevation and the landside toe times 50.



Delta Flood Emergency Safety Plan
Sacramento County, California

RD 813



ESTIMATED FLOOD DEPTHS FOR A HYPOTHETICAL
LEVEE FAILURE LOCATED AT SACRAMENTO RIVER

May 2017

Figure D1A