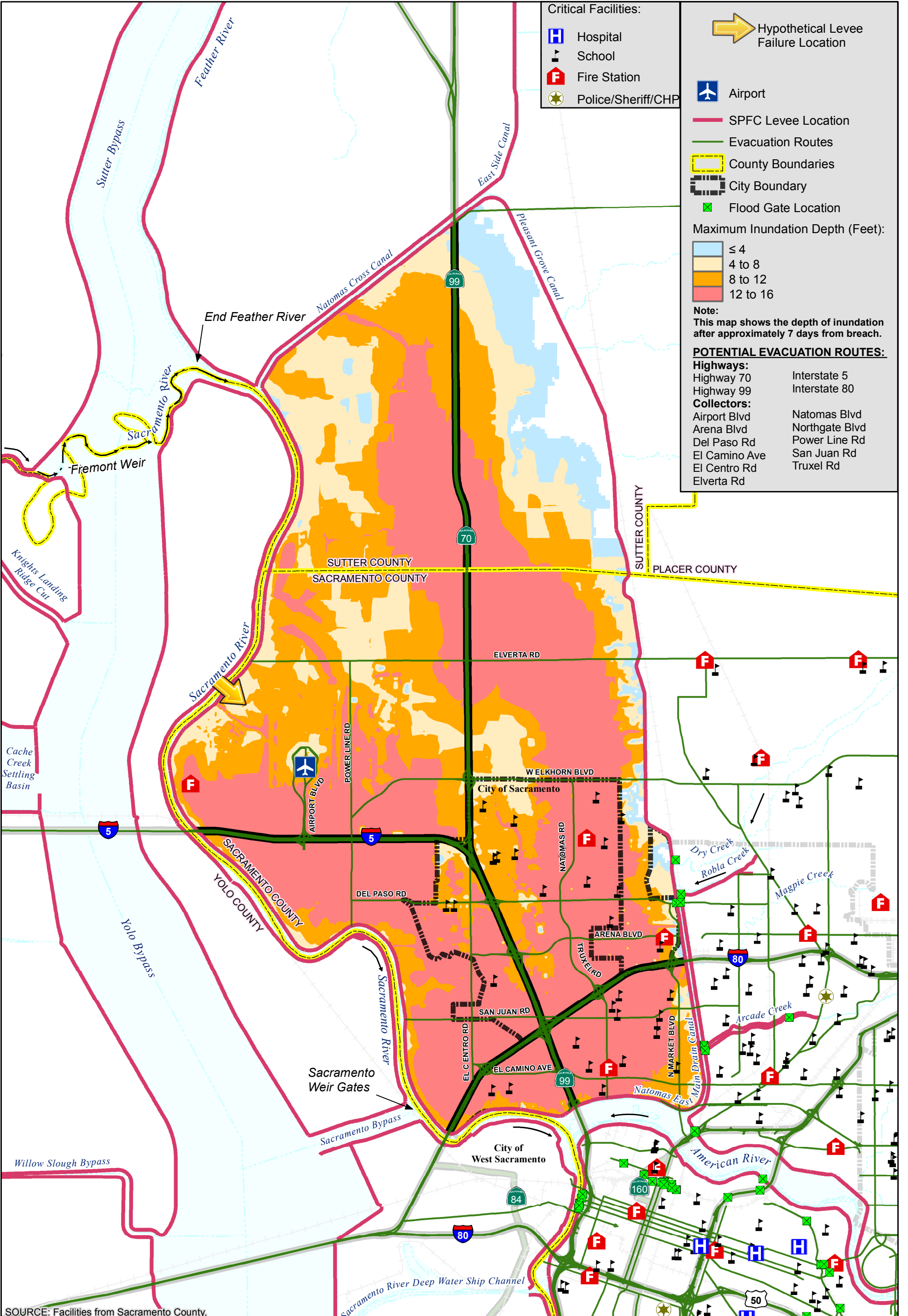


MAXIMUM FLOOD DEPTH MAP



- Critical Facilities:**
- Hospital
 - School
 - Fire Station
 - Police/Sheriff/CHP

- Hypothetical Levee Failure Location
 - Airport
 - SPFC Levee Location
 - Evacuation Routes
 - County Boundaries
 - City Boundary
 - Flood Gate Location
- Maximum Inundation Depth (Feet):**
- ≤ 4
 - 4 to 8
 - 8 to 12
 - 12 to 16

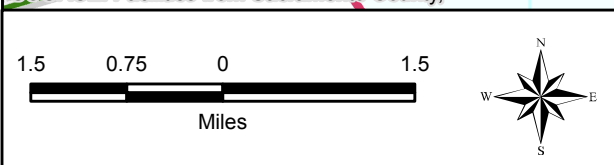
Note:
This map shows the depth of inundation after approximately 7 days from breach.

POTENTIAL EVACUATION ROUTES:

Highways:
Highway 70
Highway 99
Interstate 5
Interstate 80

Collectors:
Airport Blvd
Arena Blvd
Del Paso Rd
El Camino Ave
El Centro Rd
Elverta Rd
Natomas Blvd
Northgate Blvd
Power Line Rd
San Juan Rd
Truxel Rd

SOURCE: Facilities from Sacramento County,



City/County of Sacramento
Flood Emergency Evacuation Plan
Sacramento County, California

Natomas Study Area



NATOMAS STUDY AREA
MAXIMUM FLOOD DEPTHS
BREACH #3 AT SACRAMENTO RIVER RM 74.0
POST-FOLSOM JFP

DECEMBER 2015

NAT_B03A

26-Jan-2015 Z:\Projects\1411980_CityofSacMaps\POST_JFP\NAT_NEW1\Figure1_NAT_NEW1_wCritical.mxd SET