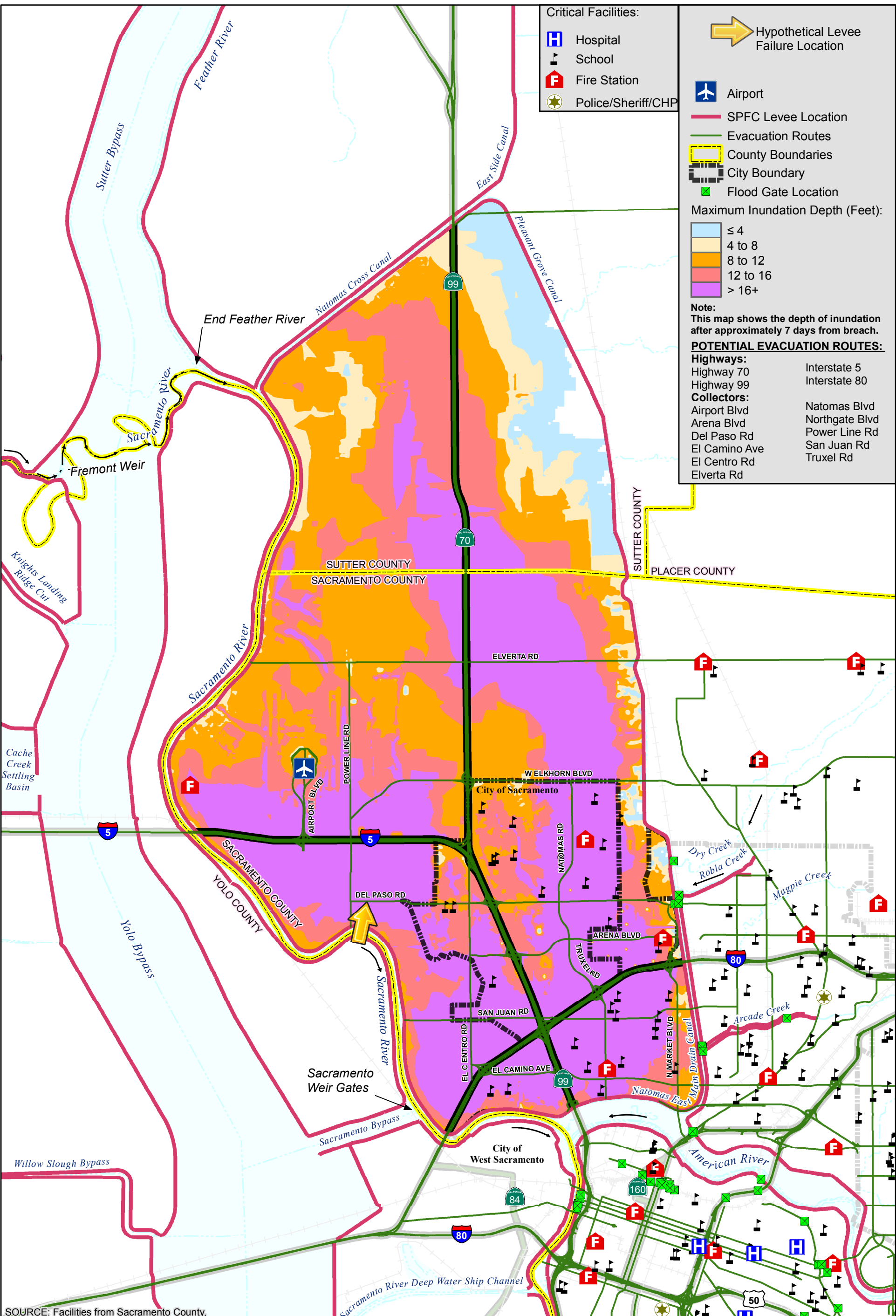


MAXIMUM FLOOD DEPTH MAP



Critical Facilities:

- H Hospital
- S School
- F Fire Station
- ★ Police/Sheriff/CHP

➔ Hypothetical Levee Failure Location

- ✈ Airport
- SPFC Levee Location
- Evacuation Routes
- County Boundaries
- City Boundary
- Flood Gate Location

Maximum Inundation Depth (Feet):

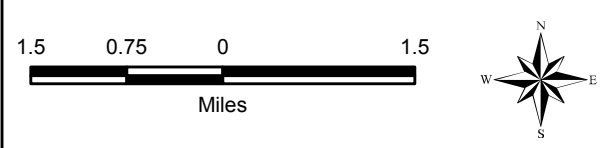
- ≤ 4
- 4 to 8
- 8 to 12
- 12 to 16
- > 16+

Note:
This map shows the depth of inundation after approximately 7 days from breach.

POTENTIAL EVACUATION ROUTES:

Highways:	Interstate 5
Highway 70	Interstate 80
Highway 99	
Collectors:	Natomas Blvd
Airport Blvd	Northgate Blvd
Arena Blvd	Power Line Rd
Del Paso Rd	San Juan Rd
El Camino Ave	Truxel Rd
El Centro Rd	
Elverta Rd	

SOURCE: Facilities from Sacramento County,



City/County of Sacramento
Flood Emergency Evacuation Plan
Sacramento County, California

Natomas Study Area



NATOMAS STUDY AREA
MAXIMUM FLOOD DEPTHS
BREACH #4 AT SACRAMENTO RIVER RM 66.924
POST-FOLSOM JFP

DECEMBER 2015

NAT_B04A

26-Jan-2015 Z:\Projects\1411980_CityofSac\Maps\POST_JFP\NAT_B14\Figure1_NAT_B14_Critical.mxd SET