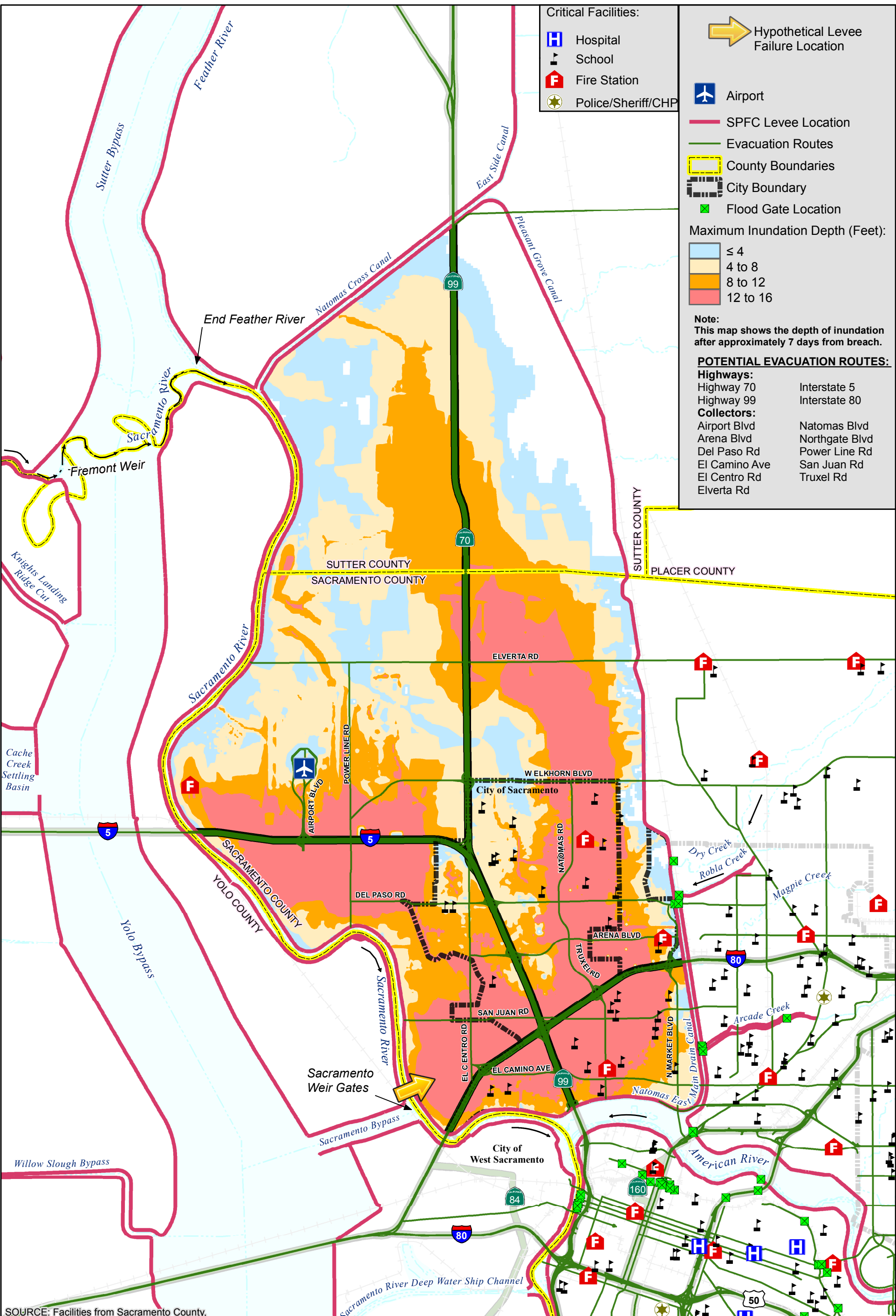


MAXIMUM FLOOD DEPTH MAP



- Critical Facilities:**
- Hospital
 - School
 - Fire Station
 - Police/Sheriff/CHP

- Hypothetical Levee Failure Location
 - Airport
 - SPFC Levee Location
 - Evacuation Routes
 - County Boundaries
 - City Boundary
 - Flood Gate Location
- Maximum Inundation Depth (Feet):**
- ≤ 4
 - 4 to 8
 - 8 to 12
 - 12 to 16

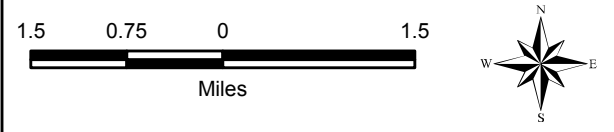
Note:
This map shows the depth of inundation after approximately 7 days from breach.

POTENTIAL EVACUATION ROUTES:

Highways:
 Highway 70 Interstate 5
 Highway 99 Interstate 80

Collectors:
 Airport Blvd Natomas Blvd
 Arena Blvd Northgate Blvd
 Del Paso Rd Power Line Rd
 El Camino Ave San Juan Rd
 El Centro Rd Truxel Rd
 Elverta Rd

SOURCE: Facilities from Sacramento County,



City/County of Sacramento
 Flood Emergency Evacuation Plan
 Sacramento County, California

Natomas Study Area



NATOMAS STUDY AREA
 MAXIMUM FLOOD DEPTHS
 BREACH #5 AT SACRAMENTO RIVER RM 64.104
 POST-FOLSOM JFP

DECEMBER 2015 NAT_B05A

26-Jan-2015 Z:\Projects\1411980_CityofSacMaps\POST_JFP\NAT_B12\Figure1_NAT_B12_Critical.mxd SET